

GROUND FLOOR APARTMENT 2 BEDROOMS 2 BATHROOMS IN FUENGIROLA

Fuengirola

REF# R5245942 695.000 €

BEDS

2

BATHS

2

BUILT

115 m²

Sometimes a home is more than an address.

It's a feeling — a moment when you open the door and realise that life can be lighter, calmer and more beautiful than you ever imagined.

This two-bedroom residence in Jade Tower is exactly that kind of place.

A modern retreat just steps from the beach, created for those who value quality, tranquility and understated luxury in their everyday life.

The moment you walk in, the first thing you notice is the light.

It moves softly through the space, drawing your eyes toward the terrace and the peaceful communal gardens outside, reminding you how close the sea truly is.

The open-plan living area and kitchen flow naturally together, forming a spacious, airy environment where mornings begin slowly and evenings tend to stretch into moments worth remembering.

The kitchen is designed for those who appreciate elegance as much as practicality.

Its clean lines, refined materials and quietly efficient appliances make cooking effortless — whether it's a

+34 951 123 083 | +44 (0)330 179 8687 | info@idiliqestates.com Local 28, Edificio D, Centro de Negocios Puerta de Banús, N-340, Km 175, 29660 Nueva Andlucia

quick breakfast before a stroll along the promenade or a relaxed dinner shared with friends.

Both bathrooms feel like a private spa escape.

Underfloor warmth, soft lighting and beautifully crafted surfaces create a soothing atmosphere.

And perhaps the most unexpected detail: both bathrooms are equipped with Japanese smart toilets.

A rare feature, usually reserved for high-end hotels, now part of your everyday comfort.

The bedrooms echo the same sense of harmony.

Exceptional sound insulation shields the space from the outside world, and motorised blinds descend with a single touch when it's time to rest.

Nights are peaceful, and mornings somehow feel brighter here.

The terrace becomes a world of its own.

A place to greet the day with a quiet coffee in the morning sun or unwind in the warm evening air as the light settles over the horizon.

The closeness of the sea isn't just seen — you smell it, hear it, feel it.

One of the home's most appealing advantages is its availability: the property is practically ready for immediate occupancy.

When the decision is made, your new life in Jade Tower can begin without delay — ideal whether you wish to move in yourself or start renting it out right away.

Life in Jade Tower, however, extends far beyond the walls of the home.

It is a lifestyle.

A collection of amenities rarely found even in luxury developments: a heated indoor pool with waterfalls, a spa with saunas and steam room, a Technogym fitness centre, a coworking space, a private cinema room and concierge services that make everyday life smoother and more enjoyable.

Here, ordinary days genuinely start to feel like holiday days.

Practicality blends seamlessly with luxury.

The price includes a private parking space and a storage room, and a second parking space can be purchased if needed.

The property is sold without furniture, but the entire interior — or just selected pieces — can be acquired separately.

You can move into a fully prepared home or create your own vision from the very beginning.

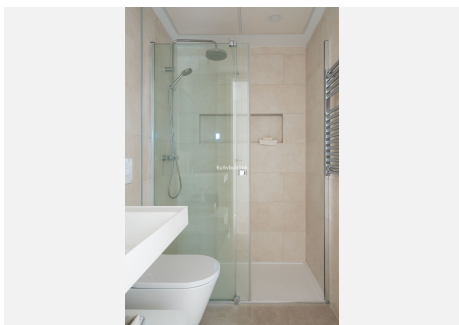
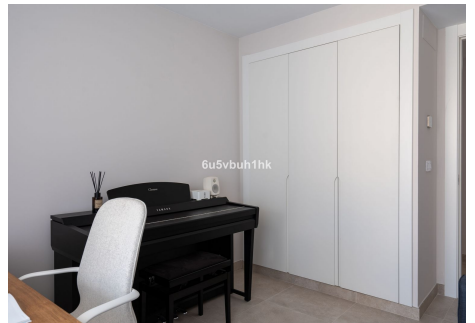
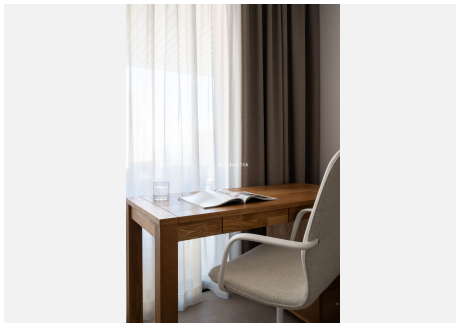
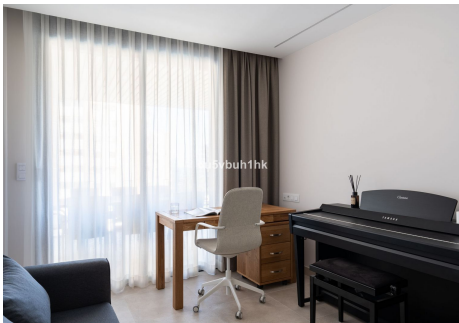
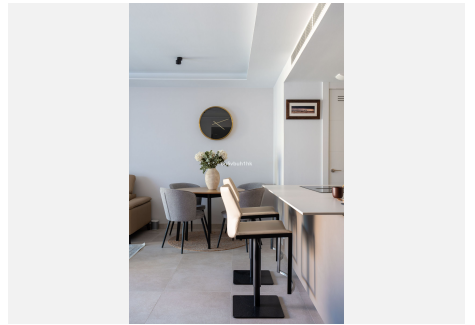
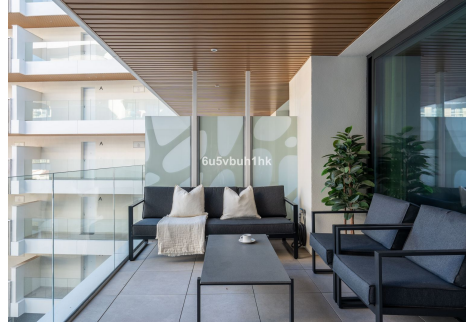
Jade Tower is not just a building.

It is a promise of quality, serenity and modern coastal luxury, right next to the shoreline and within walking distance of everything you need.

If you are searching for a place that feels right from the very first moment, this may be the moment you find it.

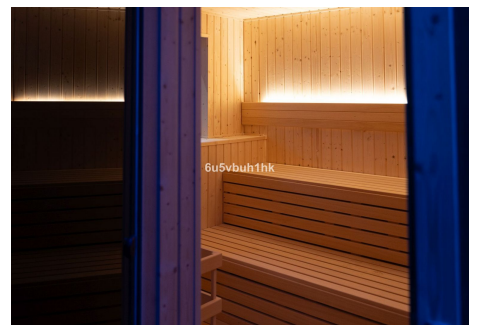
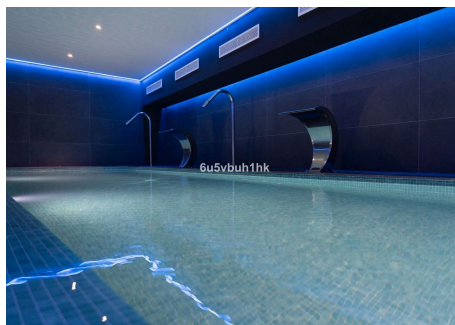
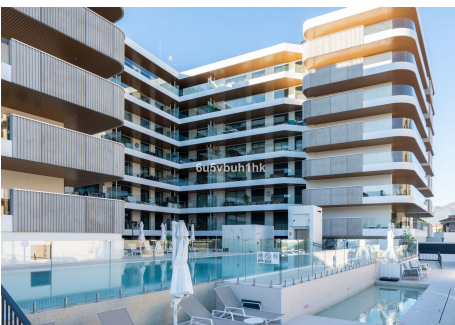
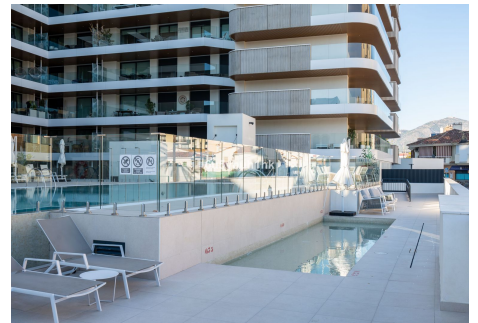
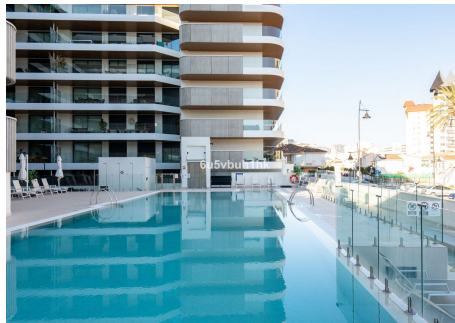
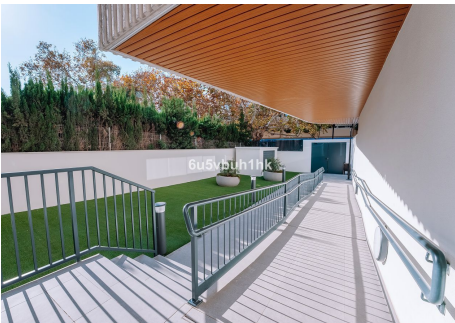
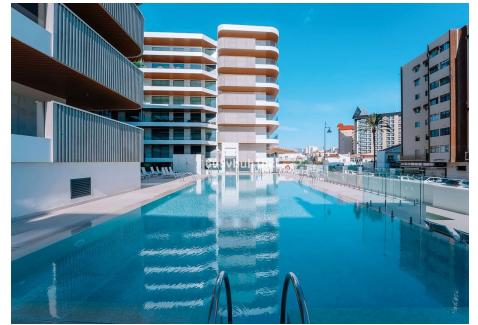
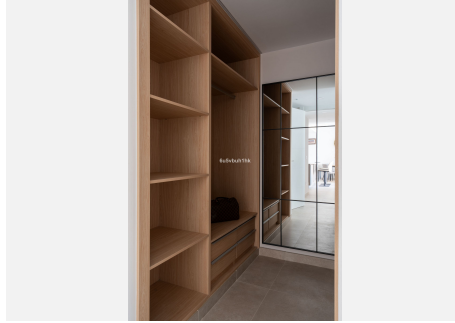
IDILIQ

ESTATES



IDILIQ

ESTATES



IDILIQ

ESTATES

