

# IDILIQ

## ESTATES



R5147461

📍 Nueva Andalucía

REF# R5147461    2.250.000 €

BEDS

5

BATHS

4

BUILT

441 m<sup>2</sup>

PLOT

1384 m<sup>2</sup>

Well located villa boarding the golf course in the low-density residential area of Nueva Andalucía, in the heart of the Golf Valley, about 10 minutes from both Marbella and Estepona and around 45 minutes' drive from Málaga airport. Very easily accessible, close to golf courses, all amenities, schools, and the iconic Puerto Banús.

Family villa with living space on one level, well distributed with good size rooms, the master bedroom has beautiful views over the golf course. With an open plan living and kitchen area opening out onto a nice patio area perfect to enjoy morning breakfast. There is a terrace looking over the golf course that leads down to the pool and garden area.

On the lower level there is a good size pool and a chill-out area for entertaining, and a large space currently used for storage with a lift leading up to the next level.

There is a car port for two cars.

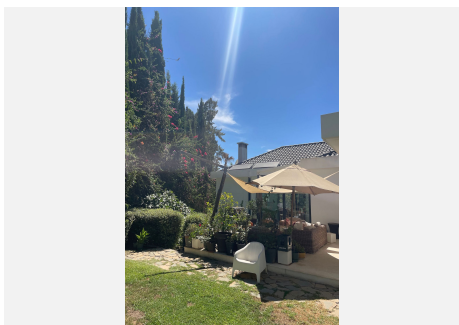
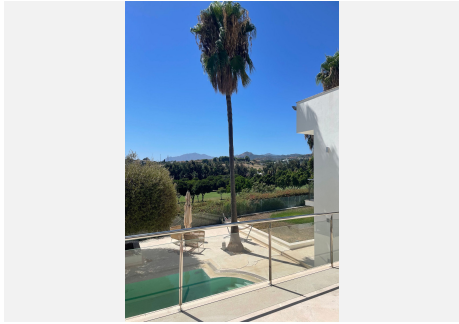
+34 951 123 083 | +44 (0)330 179 8687 | [info@idiliqestates.com](mailto:info@idiliqestates.com) Local 28, Edificio D, Centro de Negocios Puerta de Banús, N-340, Km 175, 29660 Nueva Andlaucia

# IDILIQ

## ESTATES

Located in a quiet area with security, walking distance to golf courses. The house needs some reforming but has plenty of potential.

A great choice whether you are looking to find yourself a permanent residence, holiday home, or an investment. with the potential to renovate. Call now for viewings.



# IDILIQ

ESTATES

