

R5167072

📍 Benalmadena

REF# R5167072 935.000 €

BEDS

4

BATHS

4

BUILT

229 m²

PLOT

657 m²

Located in one of Benalmádena's most prestigious and peaceful residential streets of La Capellania, this elegant Andalusian villa offers privacy, space, and stunning views of the area.

The property sits on secure walled grounds with a private elevated swimming pool, sun-soaked terraces, and spacious garden areas for year-round outdoor living. From its privileged position you can enjoy great views, while remaining just 5 minutes drive from the beach, international schools, golf courses, and Málaga Airport.

The main villa includes 3 spacious bedrooms and 3 bathrooms, with the principal suite featuring a walk-in wardrobe and ensuite. The living and dining areas are bright and expansive, and the large modern kitchen flowing onto the terraces for seamless indoor-outdoor living. A separate guest house with bedroom and its own bathroom provides the perfect retreat for visitors or extended family.

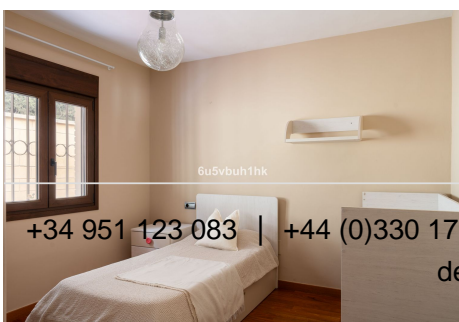
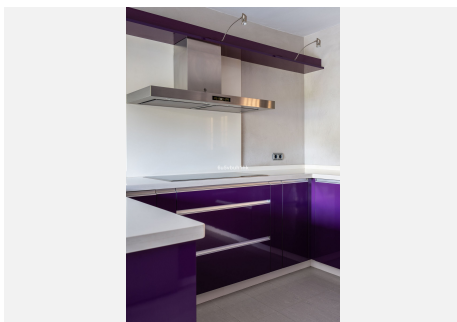
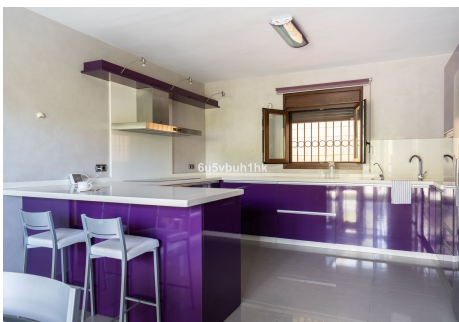
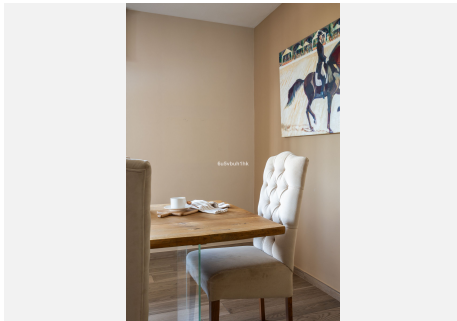
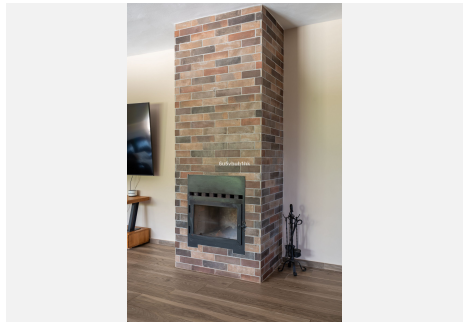
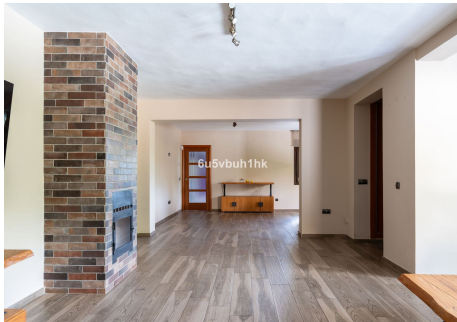
Additional features include multiple large storage rooms with potential for conversion, and a large double garage with direct access to the home.

+34 951 123 083 | +44 (0)330 179 8687 | info@idiliqestates.com Local 28, Edificio D, Centro de Negocios Puerta de Banús, N-340, Km 175, 29660 Nueva Andalucía

IDILIQ

ESTATES

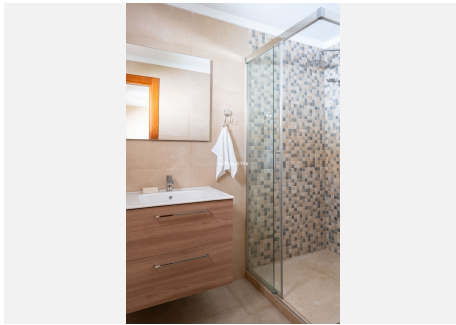
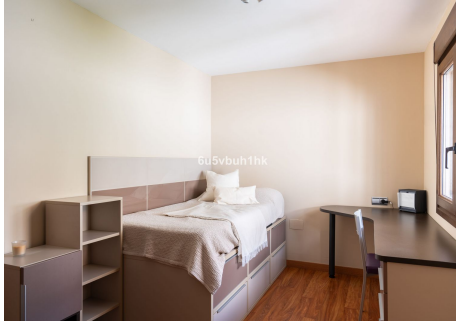
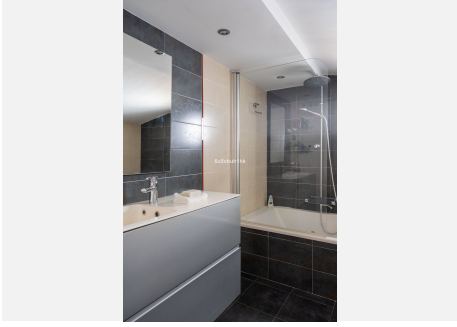
This is a rare opportunity to own a villa in one of Benalmádena's most exclusive enclaves — combining classic Andalusian exterior charm with outdoor spaces and impressive views.



+34 951 123 083 | +44 (0)330 179 8687 | info@idiliqestates.com Local 28, Edificio D, Centro de Negocios Puerta de Banús, N-340, Km 175, 29660 Nueva Andalucía

IDILIQ

ESTATES

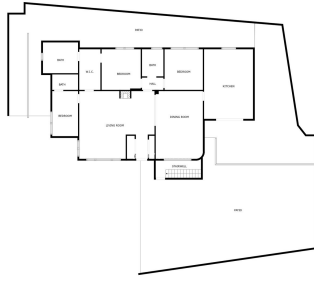


IDILIQ

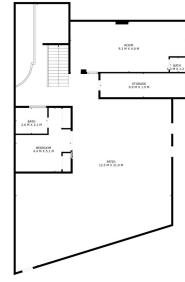
ESTATES



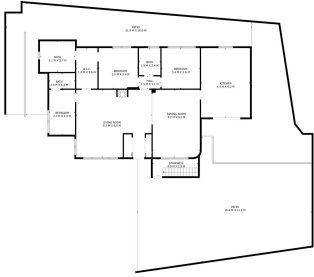
SIZES ARE APPROXIMATE, ACTUAL MAY VARY.



SIZES ARE APPROXIMATE, ACTUAL MAY VARY.



SIZES ARE APPROXIMATE, ACTUAL MAY VARY.



SIZES ARE APPROXIMATE, ACTUAL MAY VARY.

