

R5116162

📍 Torremuelle

REF# R5116162 1.090.000 €

BEDS

6

BATHS

5

BUILT

442 m²

PLOT

1535 m²

Situated in the heart of Torremuelle, one of Benalmádena's most exclusive and tranquil residential enclaves, this exceptional Andalusian-style villa blends traditional charm with refined modern comfort. Offering 6 spacious bedrooms, 5 bathrooms, and an independent guest apartment, the home is surrounded by mature gardens, expansive terraces, and panoramic views over the Mediterranean coastline and surrounding hills.

The villa welcomes you with classic Andalusian architecture and warm, open spaces designed for both relaxed living and elegant entertaining. Inside, you'll find marfil marble floors that flow throughout the main level, enhancing the sense of luxury and natural light. The impressive open-plan living and dining room is framed by large picture windows and direct access to sunny terraces, ideal for enjoying the spectacular vistas and indoor-outdoor lifestyle.

The layout includes long hallways, multiple storage rooms, and a thoughtful division of spaces, providing both functionality and comfort for family living.

A standout feature of the property is the independent apartment on one of the upper terraces — complete with its own fully equipped kitchen, laundry room, and living area. This private guest suite is perfect for extended family, visitors, or as a separate rental opportunity.

Outdoors, enjoy beautifully maintained Mediterranean gardens, a private swimming pool, and several large terraces ideal for al fresco dining, sunbathing, or entertaining under the stars. The villa sits on a quiet residential street, just a short walk to key amenities.

Boasting panoramic sea and mountain views, this spacious property combines classic Mediterranean charm with modern comfort, perfect for families or as a luxury holiday retreat.

Prime Location:

2 minutes to Torremuelle train station (direct access to Málaga city, airport, and Fuengirola)

5 minutes from the beach and seafront promenade

2 minutes to The British School of Benalmádena

Close to Torremuelle Racket Center (tennis & padel)

Scenic walking routes, cafés, shops, and restaurants all within walking distance

Located on a peaceful and upscale street in a highly desirable residential area

Property Summary:

6 Bedrooms | 5 Bathrooms

Independent Guest Apartment with Kitchen & Laundry

Large Open-Plan Living/Dining Area with Sea Views

Elegant Marfil Marble Flooring Throughout Main Living Areas

Long Hallways and Ample Storage

Private Swimming Pool

Extensive Gardens and Panoramic Terraces

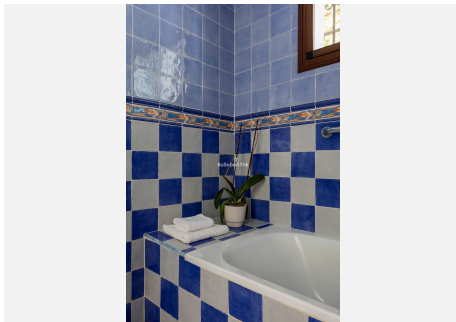
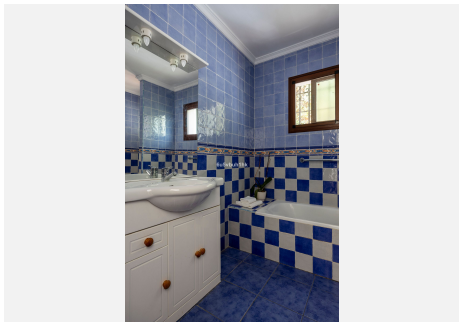
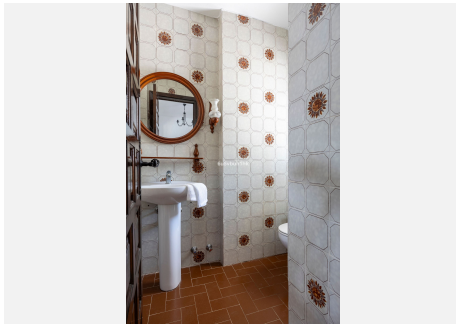
2 Private Parking Spaces

Authentic Andalusian Style with Modern Comfort

This villa offers a perfect combination of timeless style, space, privacy, and unbeatable proximity to all essentials. Whether you are looking for a full-time residence, second home, or premium rental property, this is an exceptional opportunity in one of the most coveted corners of the Costa del Sol.

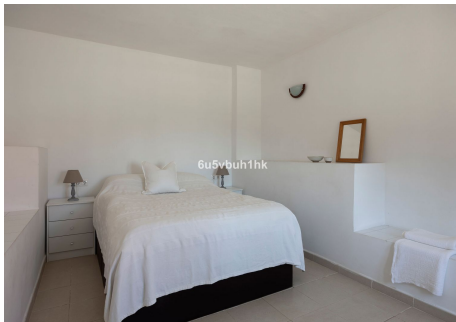
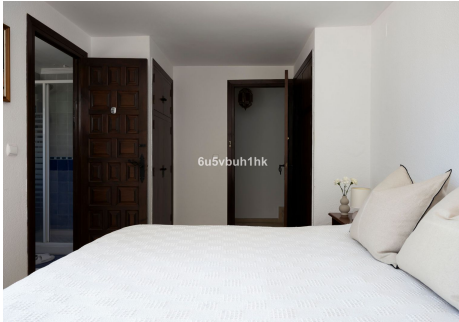
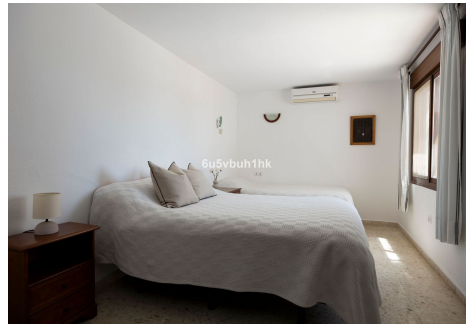
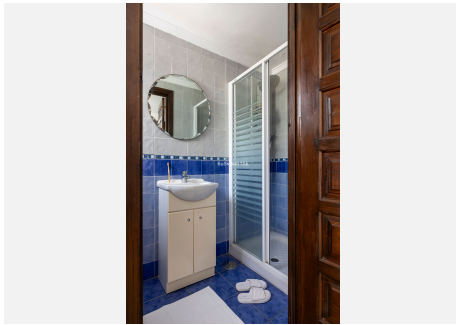
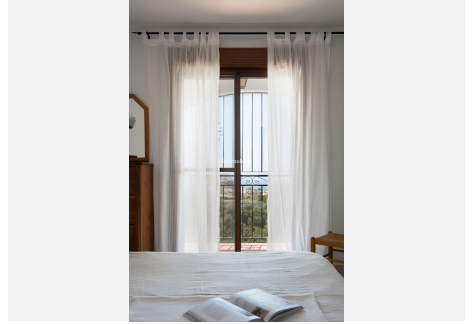
IDILIQ

ESTATES



IDILIQ

ESTATES



IDILIQ

ESTATES

