



R5105299

📍 Fuengirola

REF# R5105299 449.000 €

BEDS

2

BATHS

2

BUILT

79 m²

TERRACE

39 m²

Beautiful, brand-new 2-bedroom apartment located in a just-completed residential complex in the sought-after El Higerón area, perfectly positioned between Fuengirola and Benalmádena.

This light-filled home offers two spacious bedrooms, including a master suite with an ensuite bathroom and direct access to a large terrace facing south and west, with spectacular sea views. The apartment also features a second, separate full bathroom for guests or family use.

The open-plan kitchen is fully equipped and includes a central island, seamlessly connecting to the dining area and a generous living room. The layout is exceptionally functional, designed to make the most of space and natural light. Both the living room and master bedroom are equipped with floor-to-ceiling sliding glass doors that open up to the terrace, creating a smooth indoor-outdoor living experience.

In addition to the beautifully designed interiors, the apartment includes two private parking spaces in the underground garage and a spacious private storage room. Residents also enjoy access to the communal swimming pool in the complex.

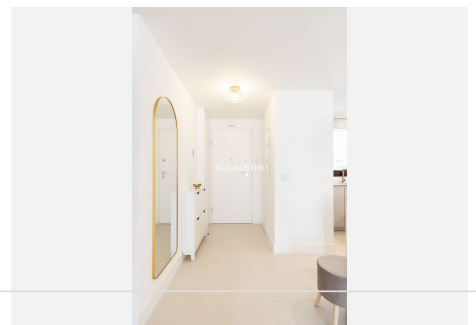
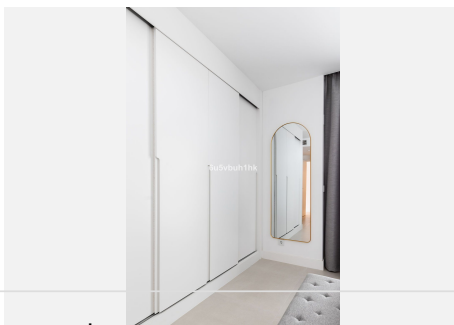
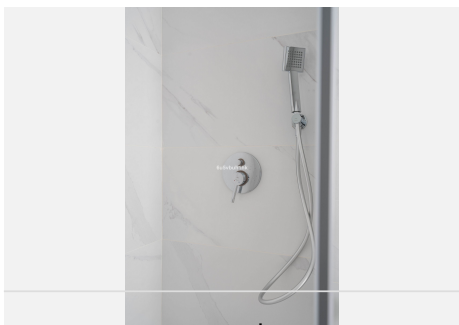
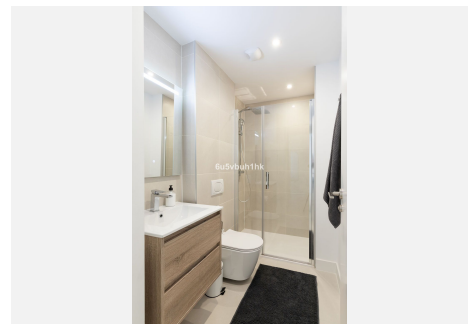
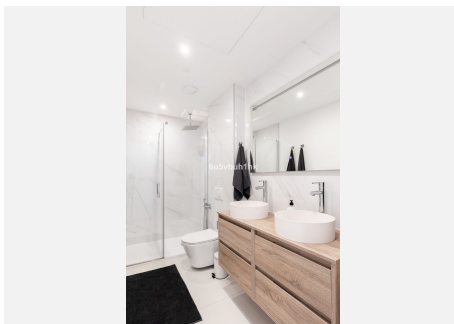
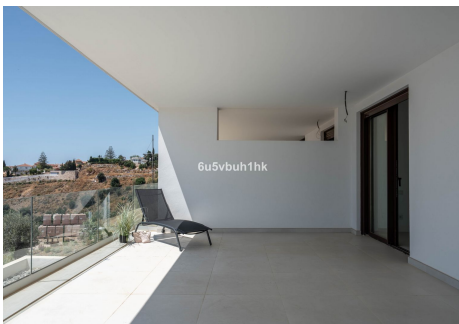
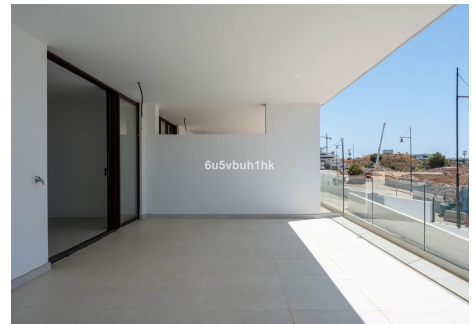
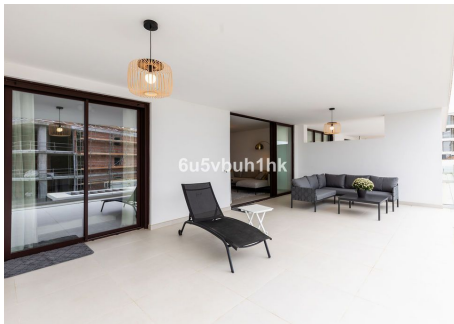
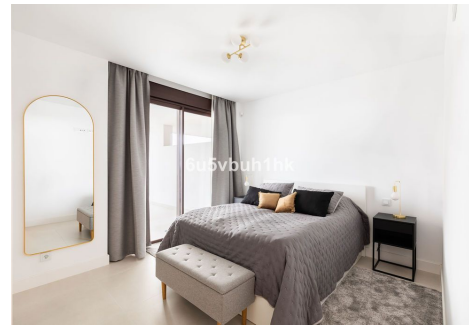
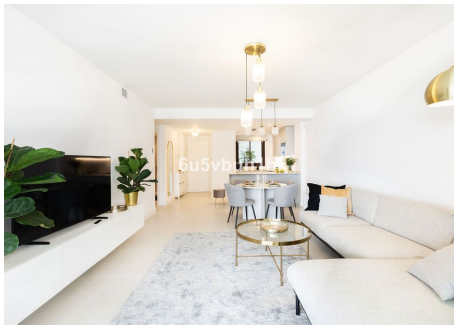
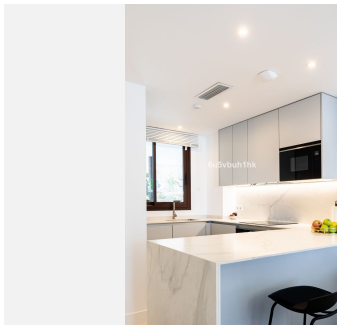
+34 951 123 083 | +44 (0)330 179 8687 | info@idiliqestates.com Local 28, Edificio D, Centro de Negocios Puerta de Banús, N-340, Km 175, 29660 Nueva Andlucia

IDILIQ

ESTATES

The location is one of the most desirable on the Costa del Sol. El Higuero is a prestigious and rapidly developing area with excellent infrastructure. The beach is just a short walk away, the train station is nearby, and Málaga Airport is only 15 minutes by car. Just next door is the exclusive Higuero Resort, offering a Michelin-starred restaurant, tennis and padel courts, a fully equipped gym, spa, and both indoor and outdoor swimming pools.

This is an opportunity to own a brand-new, move-in ready home with high-end features and an unbeatable location.



IDILIQ

ESTATES

