



R5131369

📍 El Pinillo

REF# R5131369 599.000 €

BEDS

4

BATHS

2

BUILT

139 m<sup>2</sup>

TERRACE

114 m<sup>2</sup>

Introducing this spectacular property: a penthouse of 139 m<sup>2</sup> in a fifth floor with lift, located in one of the most peaceful and sought-after areas of Torremolinos. With two stunning terraces of 110 m<sup>2</sup> and 114 m<sup>2</sup> respectively, this home redefines outdoor living, offering an unparalleled space to relax, entertain, and enjoy the Mediterranean climate all year round.

The property is designed to seamlessly integrate indoor and outdoor spaces. The main solarium terrace features a bar, sink, outdoor dining area, chill-out zone with artificial grass, sun loungers, and an outdoor shower with water heater. It's a perfect leisure space, with the option to install a jacuzzi or small pool. The second terrace, located at the level of the home, offers various environments, including a climate-controlled lounge with retractable glazing and foldable enclosures—ideal for every season. The kitchen, living room, and master bedroom all have direct access to this terrace, creating a constant sense of spaciousness and fluidity between rooms.

# IDILIQ

ESTATES

Inside, the property features four spacious and bright bedrooms, all exterior-facing and equipped with built-in wardrobes. The master suite includes a private bathroom. There are two full bathrooms in total, centralized air conditioning, smooth walls, and marble floors—elements that enhance the home's elegant and comfortable style.

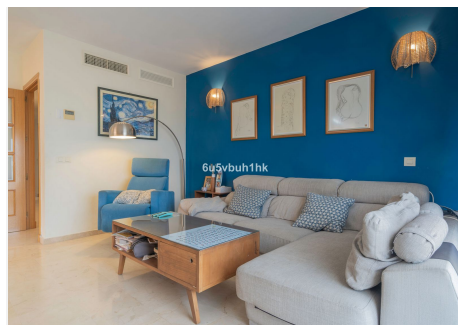
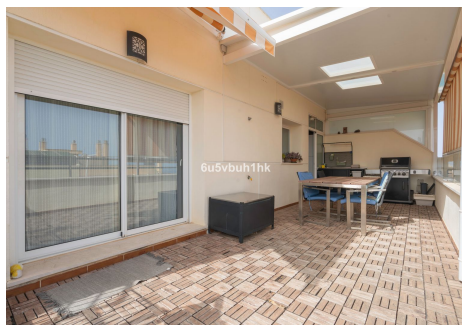
The main living room, with double access to the terrace, serves as the true heart of the home. The independent kitchen is generous in size and flooded with natural light, complemented by a practical laundry area. Recent upgrades include new built-in and lined wardrobes, wooden pergolas, an outdoor kitchen in the solarium, and motorized awnings for added comfort.

This penthouse is part of a private residential complex with well-maintained gardens, paddle tennis courts, and a communal swimming pool. A parking space and storage room are included in the price.

With excellent transport links by train and bus, and proximity to all essential services (schools, shops, leisure areas, pharmacies), this penthouse is the ideal choice for those seeking a high quality of life without giving up the proximity to the coast—just five minutes away by car.

An extraordinary property that combines luxury, privacy, and functionality in an unbeatable location.

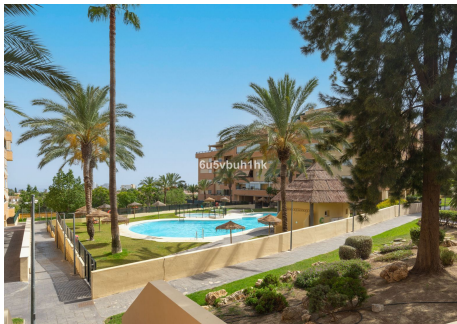
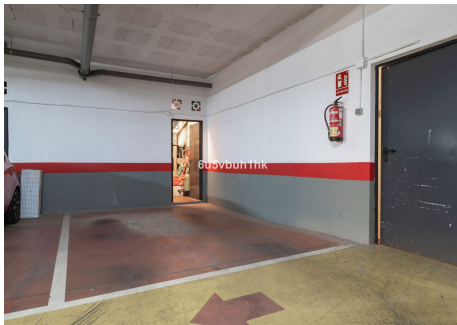
Book your visit and experience it in person.



+34 951 123 083 | +44 (0)330 179 8687 | [info@idiligestates.com](mailto:info@idiligestates.com) Local 28, Edificio D, Centro de Negocios Puerta de Banús, N-340, Km 175, 29660 Nueva Andalucía

# IDILIQ

ESTATES



# IDILIQ

ESTATES

