


R5020024

 Alhaurín de la Torre

REF# R5020024 695.000 €

BEDS

4

BATHS

3

BUILT

639 m²

PLOT

1580 m²

Set on a single level with a large, convertible basement, this home blends comfort, style, and unbeatable views of the stunning Guadalhorce valley.

Originally built in 2004, the property has been fully renovated from top to bottom, ready for you to move in and enjoy. Every detail has been attended to with impeccable attention to detail. Sitting on a generous 1,538 m² plot, the property offers a lovely garden and a private pool—perfect for soaking up the sun and enjoying the outdoors.

Inside, you'll find around 204 m² of living space on the main floor, laid out with 4 inviting bedrooms and 3 bathrooms of which two are ensuite. The spacious living-dining area is a real showstopper, with a fireplace and about 80 m² to stretch out and unwind. From here, step out onto the large terrace and take in the breathtaking views.

The kitchen is fully equipped with brand-new Bosch appliances and plenty of storage, ready for your favorite recipes. And downstairs, the 350 m² basement is a blank canvas—create guest suites, a home office, a

+34 951 123 083 | +44 (0)330 179 8687 | info@idiliqestates.com Local 28, Edificio D, Centro de Negocios Puerta de Banús, N-340, Km 175, 29660 Nueva Andlucia

IDILIQ

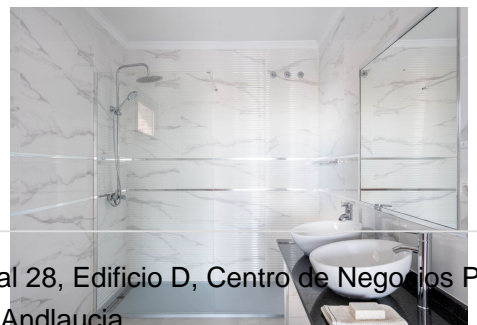
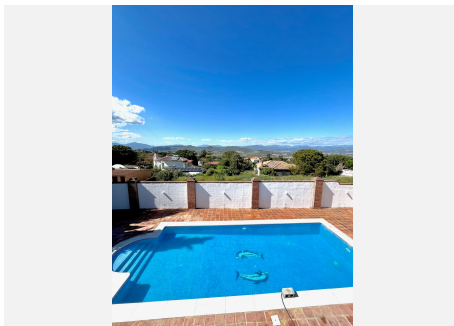
ESTATES

gym, a cinema room... the possibilities are endless.

There's also a storage room, a garage, and extra parking space for up to 5 more cars—so you've got plenty of room for everything and everyone. This is a turn-key solution for the buyer who accepts nothing but the best. Just move in and enjoy.

This villa offers plenty of privacy and is perfectly located in the peaceful, coveted residential area of Pinos de Alhaurín. Surrounded by nature but still close to everything—shops, beach, Málaga city, and the airport.

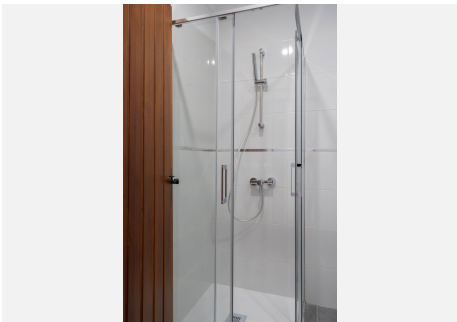
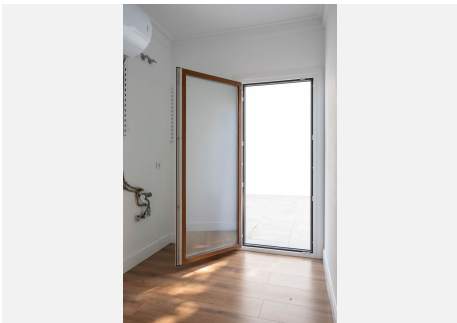
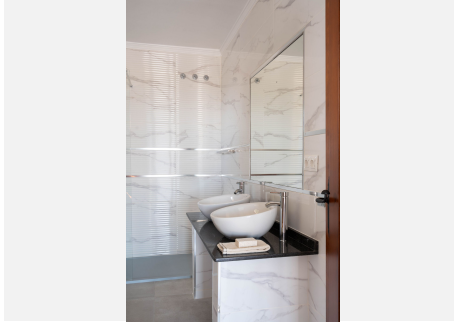
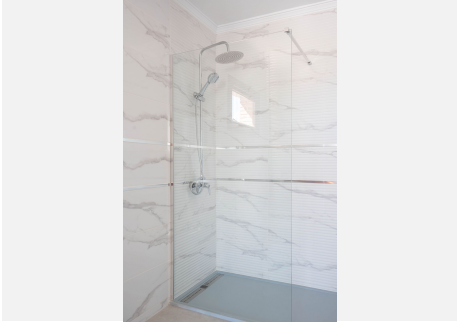
Call for a visit to experience it first-hand!



+34 951 123 083 | +44 (0)330 179 8687 | info@idiliqestates.com Local 28, Edificio D, Centro de Negocios Puerta de Banús, N-340, Km 175, 29660 Nueva Andalucía

IDILIQ

ESTATES



IDILIQ

ESTATES

