



R5007526

 Benalmadena Costa

REF# R5007526    795.000 €

BEDS

3

BATHS

3

BUILT

182 m<sup>2</sup>

PLOT

294 m<sup>2</sup>

This beautiful corner house is the epitome of comfort, elegance, and breathtaking views. Featuring 3 spacious bedrooms, each with access to its own private terrace, you'll be able to enjoy panoramic views of both the stunning mountains and the serene sea from every room. The large main terrace is perfect for outdoor living, offering ample space for entertaining or simply unwinding while soaking in the scenic beauty around you.

With the possibility to convert the home into a 4-bedroom layout, this property offers flexibility to suit your evolving needs. Solar panels are installed, ensuring energy efficiency and contributing to a more sustainable lifestyle.

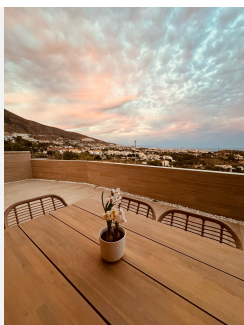
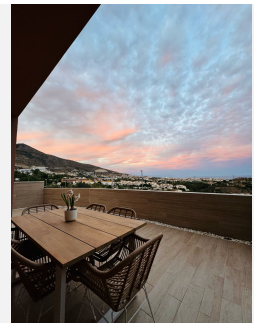
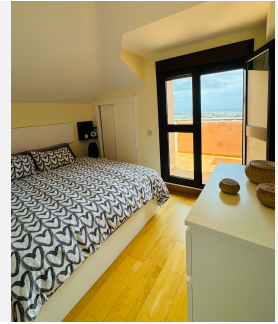
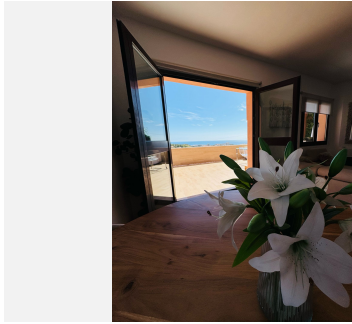
Located just minutes from the beach, town center, schools, and supermarkets, the property offers convenience while being nestled in a very calm and peaceful area, ideal for those who want to enjoy a tranquil lifestyle. The urbanization includes excellent amenities such as a pool and a paddle court, perfect for relaxation and recreation.

# IDILIQ

## ESTATES

Additionally, two parking spaces are included in the price, providing easy and secure parking for you and your family.

This home is the perfect place to enjoy a life of comfort, privacy, and serenity, all while being close to everything you need.





# IDILIQ

ESTATES

