

## HOUSE 3 BEDROOMS 5 BATHROOMS IN BENAHAVÍS

 Benahavís

REF# R5361175 1.350.000 €

BEDS

3

BATHS

5

BUILT

336 m<sup>2</sup>

PLOT

474 m<sup>2</sup>

TERRACE

106 m<sup>2</sup>

Set within the exclusive gated community of Benahavís Hills Country Club, this elegant villa offers exceptional privacy, security, and uninterrupted panoramic views over the surrounding mountains and the Mediterranean Sea. Positioned in a quiet cul-de-sac with no properties in front, every room in the home enjoys open, elevated views.

Upon arrival, a private two-car parking area welcomes you, immediately framing the natural beauty that defines this property. The entrance level provides access to both a staircase and a lift.

The main living level features a bright and spacious open-plan layout, combining a refined living area with fireplace, dining space, and a recently renovated modern kitchen. Large windows and direct access to two terraces create an effortless indoor-outdoor lifestyle, ideal for both relaxing and entertaining. A guest toilet is also conveniently located on this floor.

The bedroom level comprises three en-suite bedrooms. The master suite enjoys access to a private terrace and features a sauna with views, creating a true retreat. The additional two bedrooms, both with private balconies, share the same spectacular outlook and natural light.

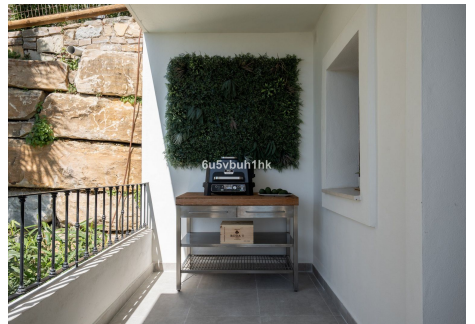
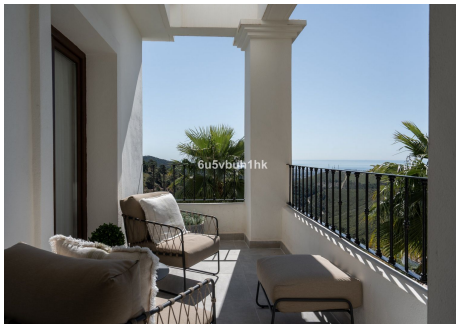
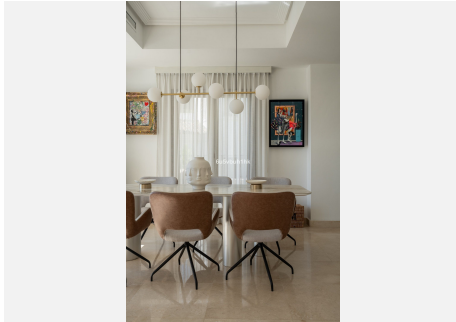
# IDILIQ

ESTATES

On the lower level, the entertainment area offers a second living room, a fully equipped kitchen, bathroom, and additional storage. This area opens directly onto the garden and pool.

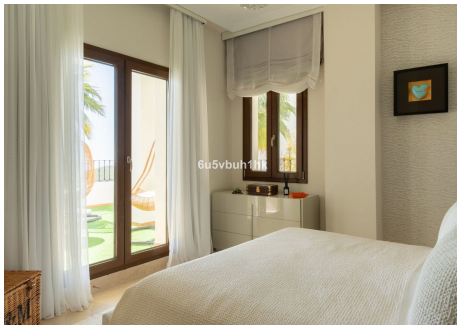
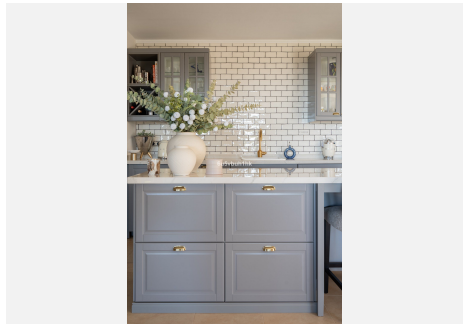
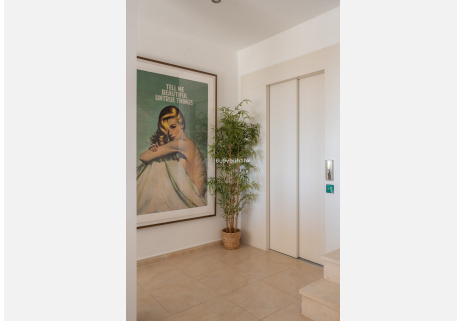
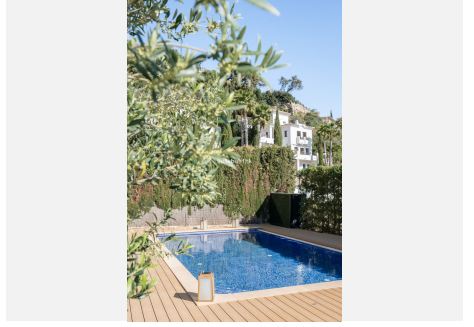
The outdoor area is designed for maximum enjoyment and privacy, with lounge and dining areas, a heated swimming pool, and an outdoor shower.

The property is presented in excellent condition and combines comfort, functionality, and understated luxury in Benahavís



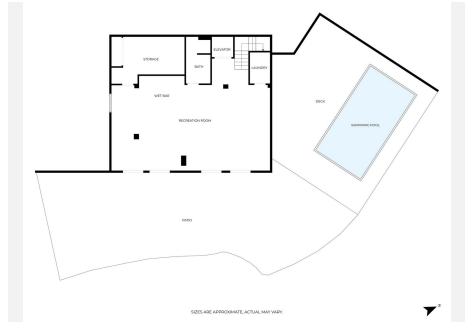
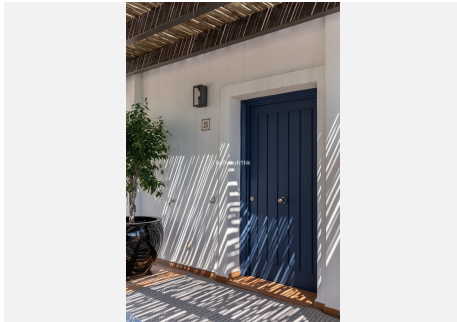
# IDILIQ

ESTATES



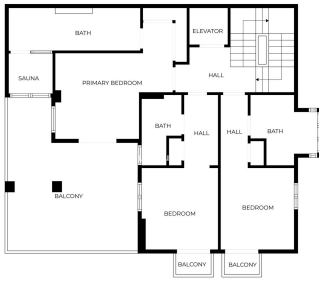
# IDILIQ

ESTATES

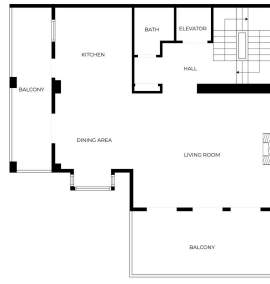


# IDILIQ

ESTATES



SIZES ARE APPROXIMATE, ACTUAL MAY VARY.



SIZES ARE APPROXIMATE, ACTUAL MAY VARY.

