



R4842316

📍 Málaga

REF# R4842316 1.590.000 €

BEDS

2

BATHS

2

BUILT

116 m²

PLOT

65 m²

TERRACE

10 m²

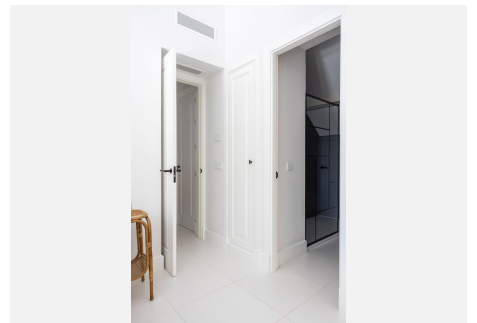
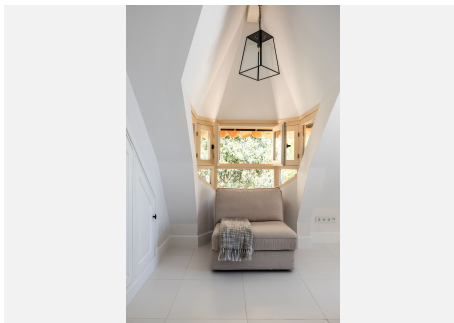
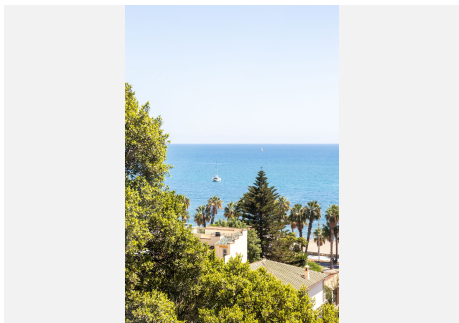
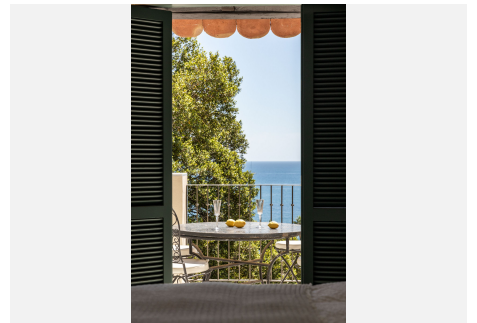
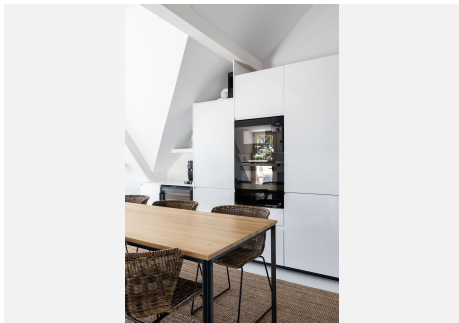
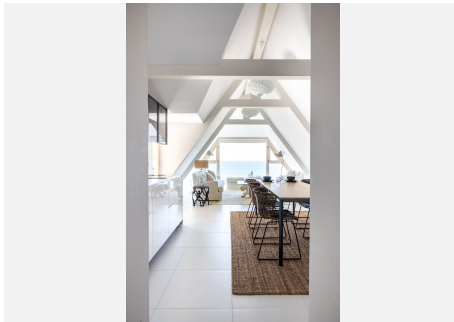
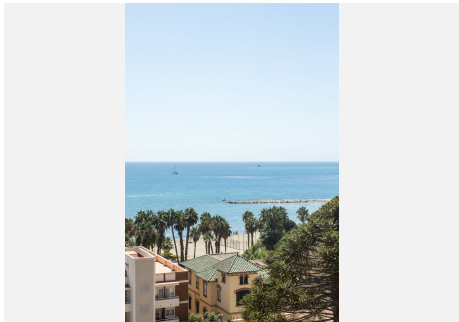
This luxury penthouse in the prestigious Monte Sancha neighborhood of Málaga offers an exceptional living experience, combining modern elegance with historic charm. Situated in a fully refurbished historic building with only three exclusive residences, this home provides an unparalleled level of privacy and tranquility, along with sweeping panoramic views of the Mediterranean Sea and the city skyline. The penthouse features two generously sized bedrooms, each with its own en-suite bathroom, providing a comfortable and private retreat. The open-plan living area, where the kitchen, dining, and lounge spaces seamlessly merge, is designed to maximize both space and light. Floor-to-ceiling windows frame the stunning sea and city views, while the slightly tilted ceiling, accentuated by elegant wooden beams, adds character to the space. High ceilings, exquisite carpentry, and high skirting boards throughout the home underscore the attention to detail and quality of craftsmanship. The expansive terrace, accessible from both the kitchen area and the master bedroom, offers an ideal setting for outdoor dining, relaxation, and entertaining. Here, you can enjoy the gentle sea breeze and take in the breathtaking views at any time of day. Additionally, the penthouse includes a guest toilet and built-in wardrobes, ensuring ample storage and convenience. Residents also have access to a private garden, perfect for moments of serenity, and a community pool that offers a refreshing escape on warm days. Despite its peaceful setting, the penthouse is just a 20-minute walk from

+34 951 123 083 | +44 (0)330 179 8687 | info@idiliqestates.com Local 28, Edificio D, Centro de Negocios Puerta de Banús, N-340, Km 175, 29660 Nueva Andalucía

IDILIQ

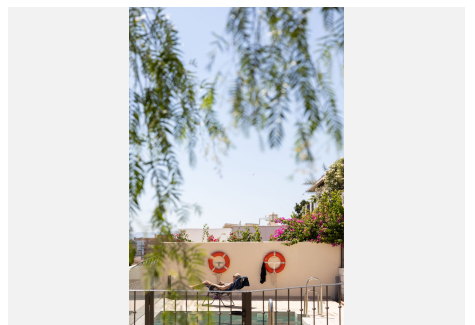
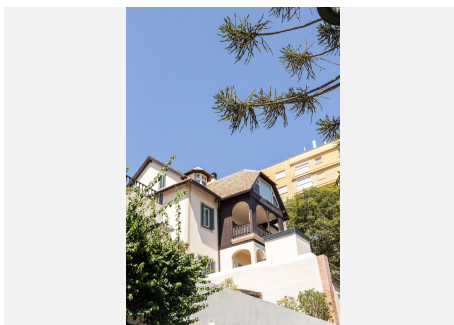
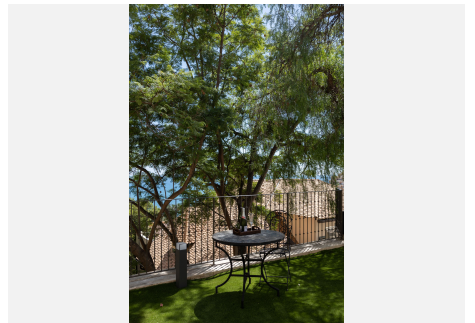
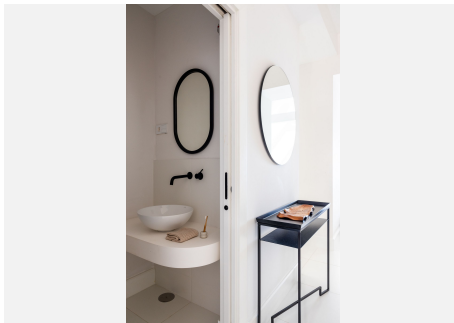
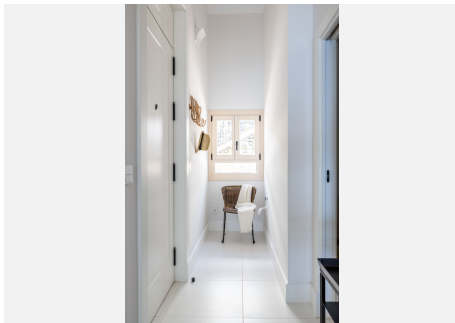
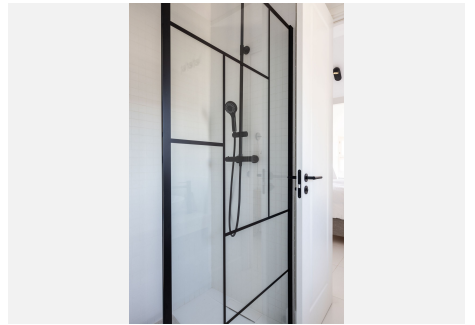
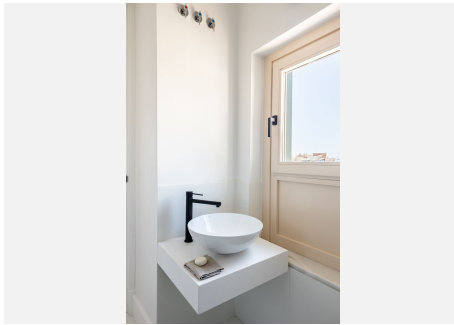
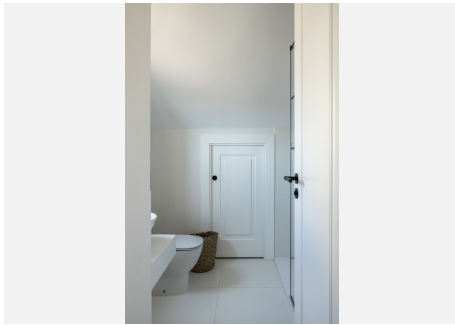
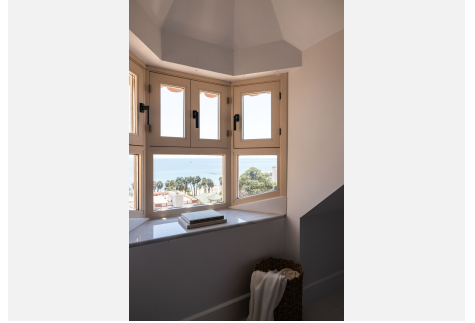
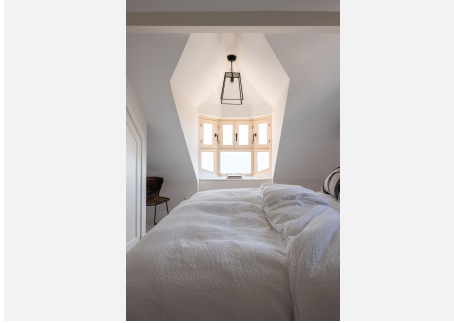
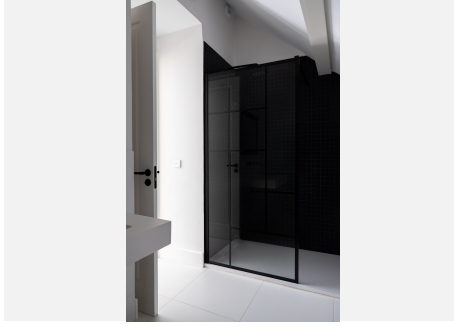
ESTATES

Málaga's vibrant city center, where you can explore its rich cultural heritage, shops, and dining options. The beach is just two streets away, offering easy access for a day of sun and sand. The neighborhood is well-served by nearby supermarkets, schools, and other essential amenities, making it an ideal location for both convenience and lifestyle. This Monte Sancha penthouse represents a unique opportunity to enjoy luxury living in one of Málaga's most desirable areas, where modern comfort meets historic allure.



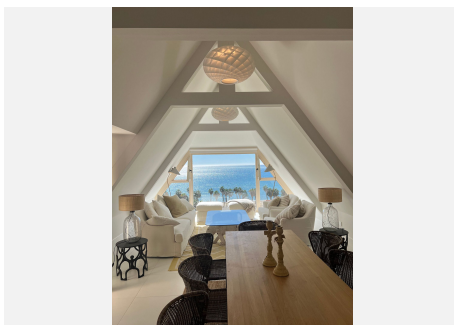
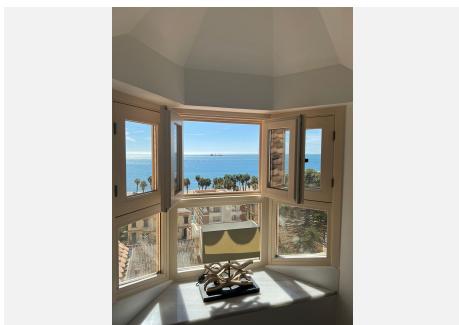
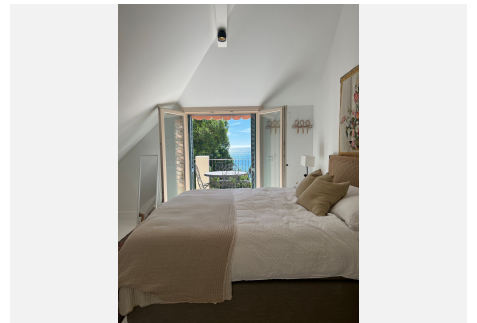
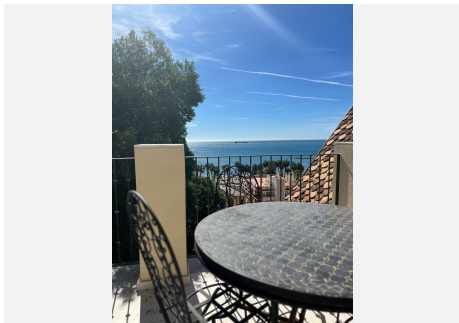
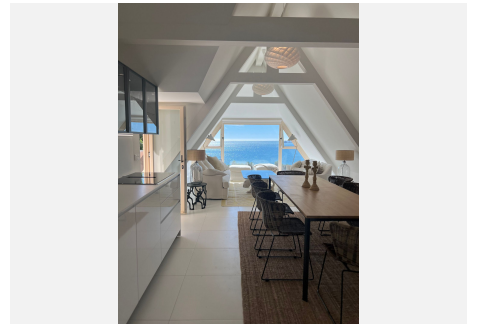
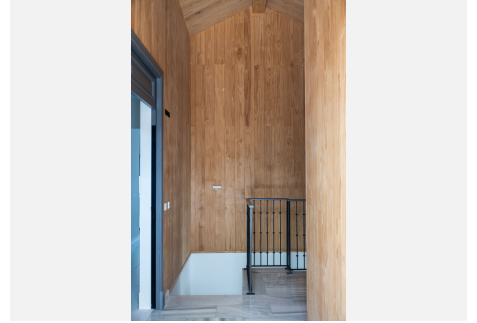
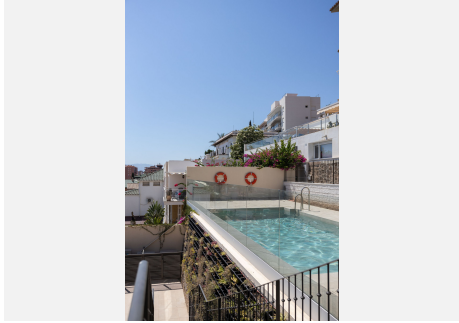
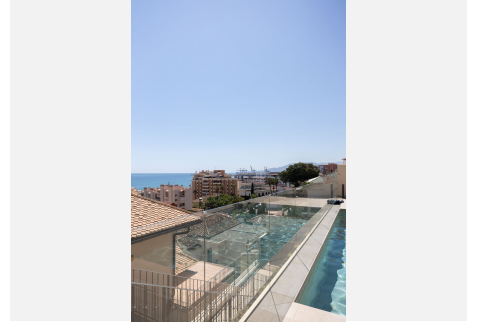
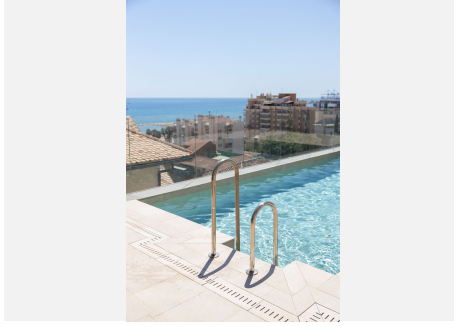
IDILIQ

ESTATES



IDILIQ

ESTATES



IDILIQ

ESTATES

