

R4787101

📍 Benahavís

REF# R4787101 2.300.000 €

BEDS

5

BATHS

5

BUILT

406 m²

PLOT

1018 m²

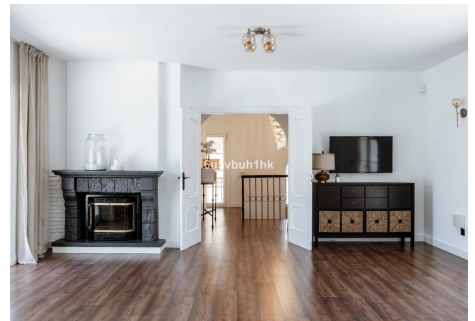
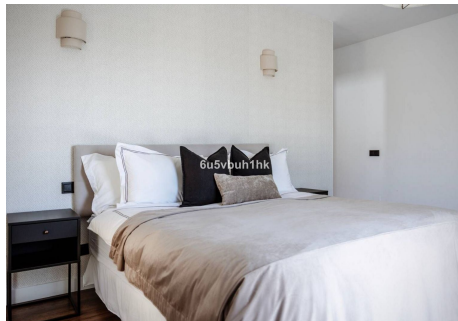
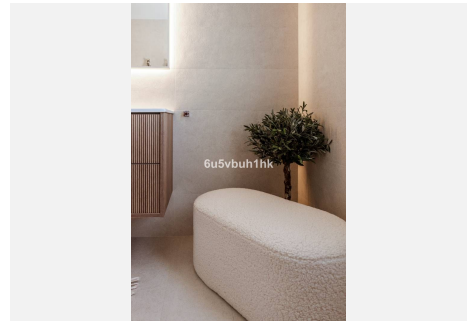
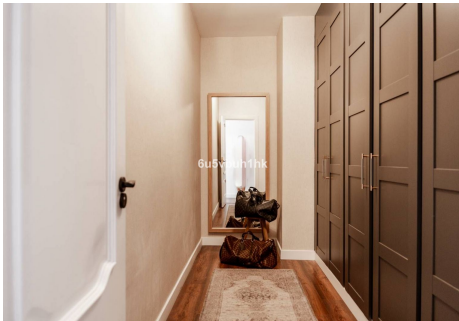
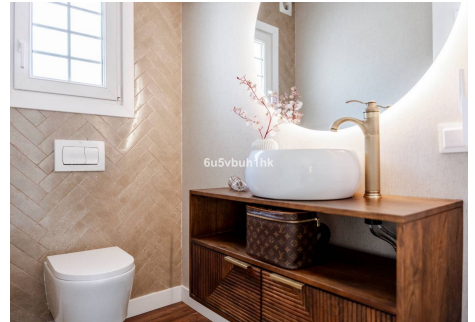
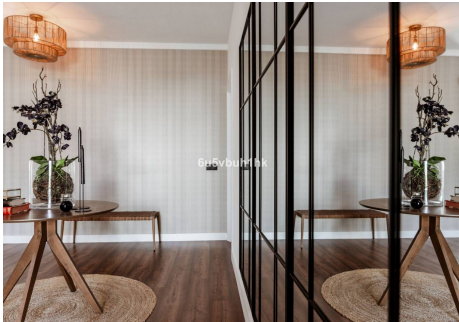
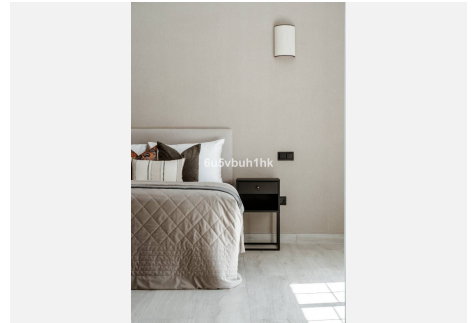
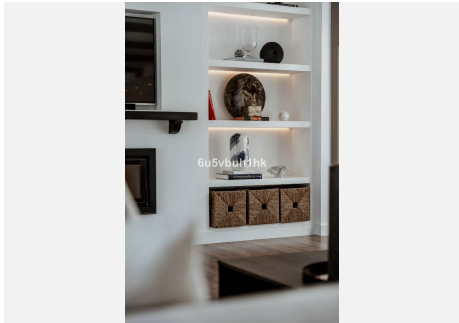
Immerse yourself in the elegance and comfort of this sophisticated, recently renovated villa, located in the tranquil and exclusive area of El Paraíso Alto, surrounded by several prestigious golf courses. Prime Location: This villa is situated on a quiet cul-de-sac, offering maximum tranquility and privacy. Just a 15-minute drive from Puerto Banús and less than 10 minutes from the nearest beach, this property is also less than 10 minutes from Benahavís, renowned for its charming restaurants and bars. Interior Spaces: The villa features five spacious bedrooms, each with its own en-suite bathroom, ensuring privacy and comfort for all residents. The large open-plan kitchen, equipped with Samsung and Bosch appliances, is perfect for culinary enthusiasts. The bright and airy living room is designed to create a warm and welcoming atmosphere. Additional Amenities: A well-organized laundry room adds convenience to your daily routines. The villa also offers generous storage solutions and built-in wardrobes, creating bright and airy spaces throughout the property. Outdoor Areas: Enjoy moments of relaxation in the charming patio, ideal for outdoor leisure, or take a dip in the 12-meter long pool, perfect for cooling off on warm days (with heating option). Next to the pool, you'll find a comfortable lounge and dining area, perfect for spending quality time with family and friends. The elegant outdoor kitchen is a paradise for barbecue lovers. Garden and Views: The garden is a true oasis, with flowers blooming all year round, creating a vibrant and colorful landscape.

+34 951 123 083 | +44 (0)330 179 8687 | info@idiliqestates.com Local 28, Edificio D, Centro de Negocios Puerta de Banús, N-340, Km 175, 29660 Nueva Andlucia

IDILIQ

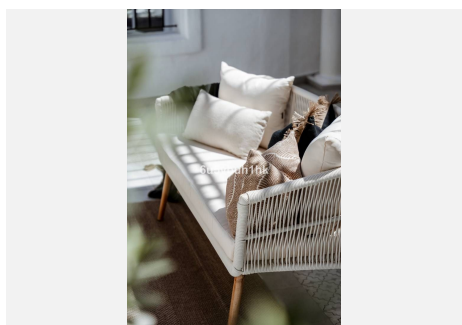
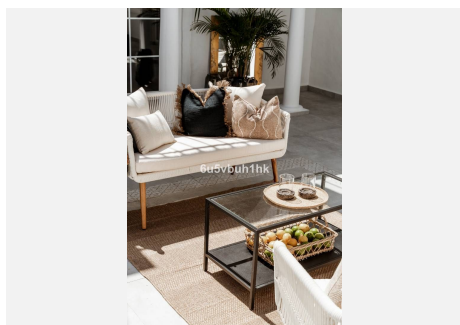
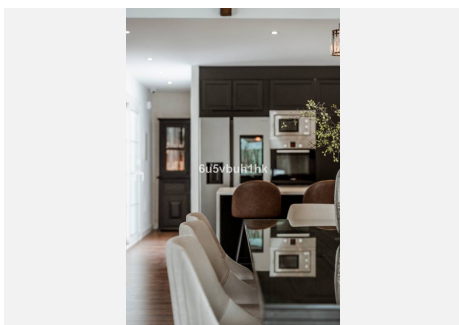
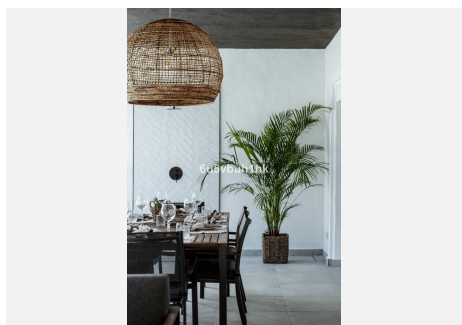
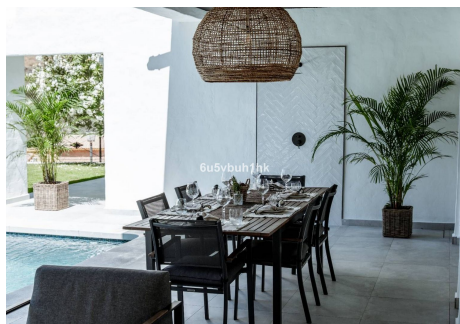
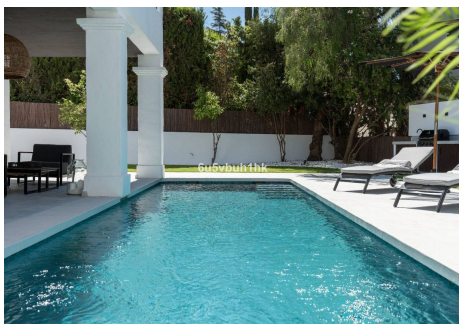
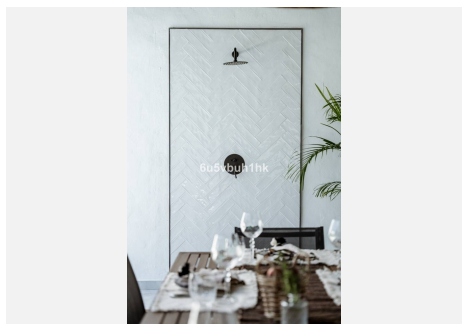
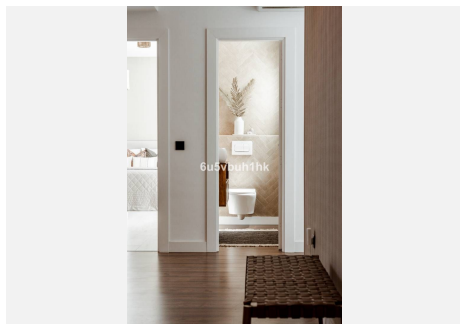
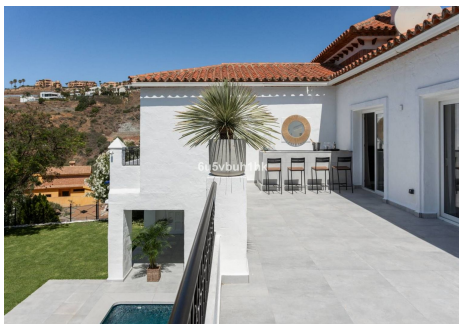
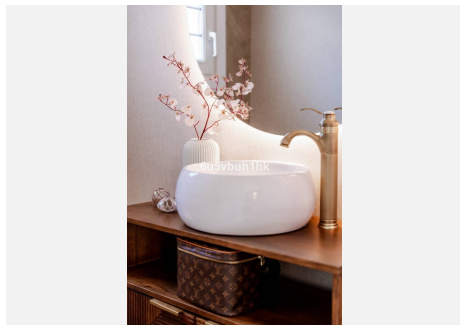
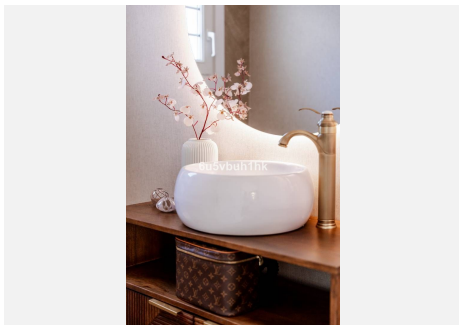
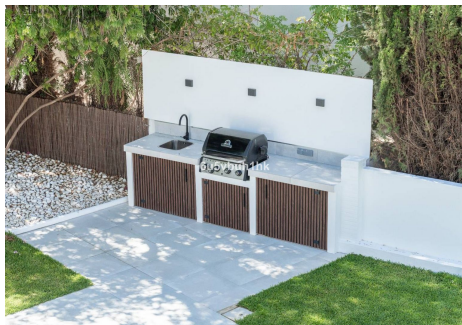
ESTATES

The second floor offers sea views, while a very spacious terrace provides ample space to relax and enjoy the surroundings. Enjoy Sun and Privacy: This villa offers an idyllic lifestyle, allowing you to enjoy sun and privacy all day long in a privileged setting.



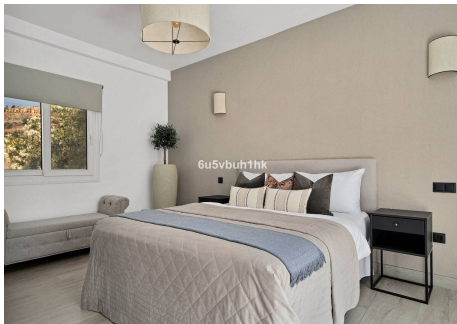
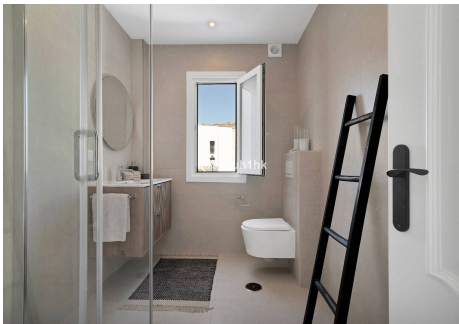
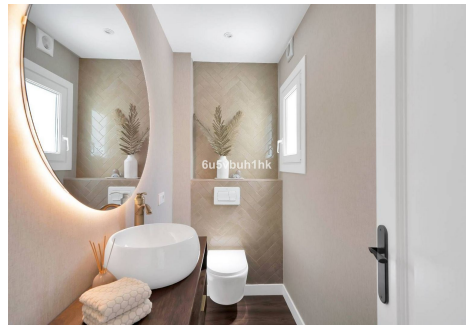
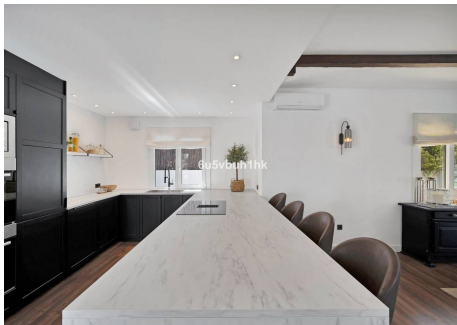
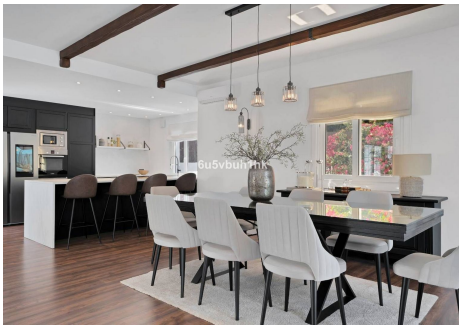
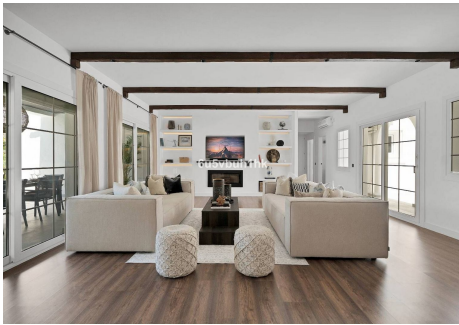
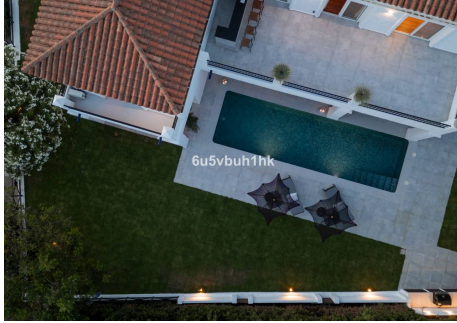
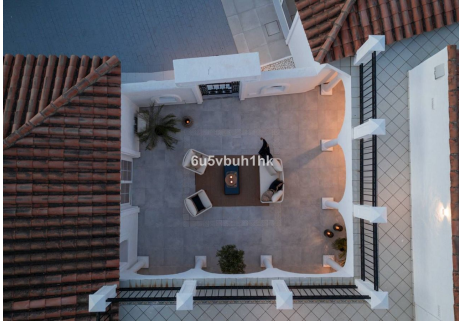
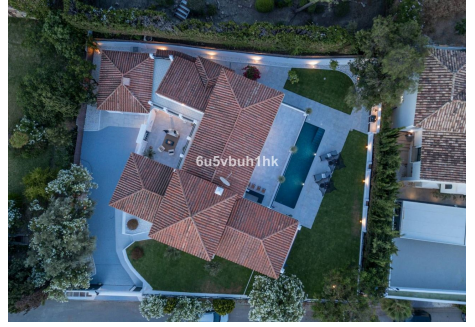
IDILIQ

ESTATES



IDILIQ

ESTATES



IDILIQ

ESTATES

