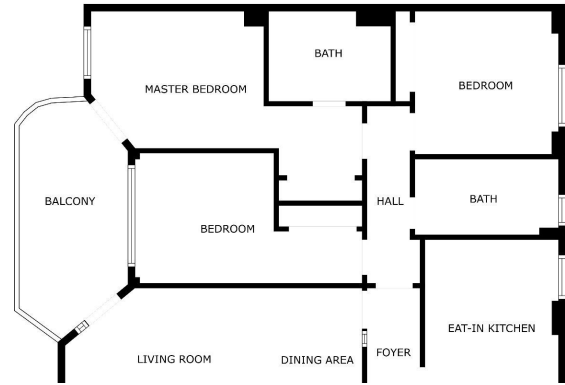


IDILIQ

ESTATES



R4783717

📍 Málaga

REF# R4783717 599.000 €

BEDS

3

BATHS

2

BUILT

110 m²

PLOT

8499 m²

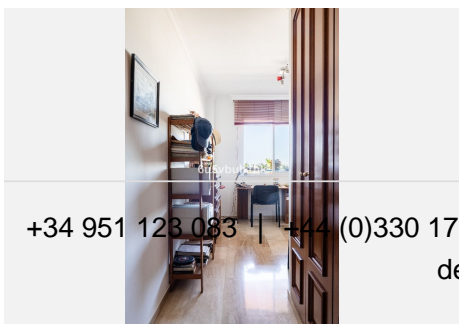
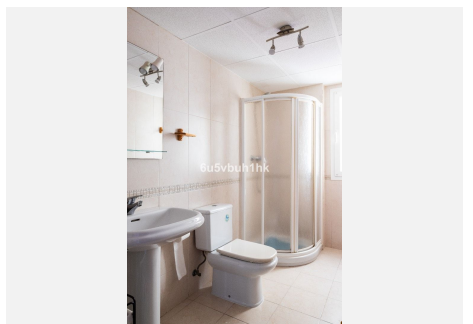
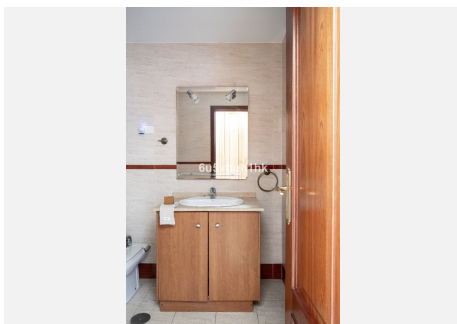
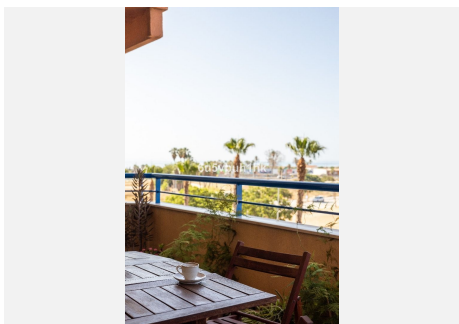
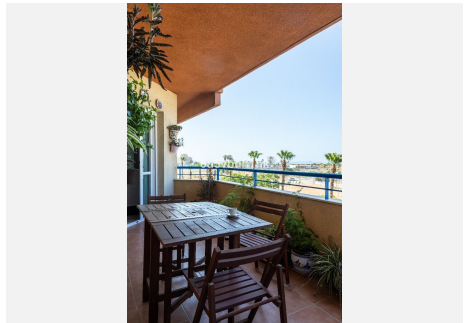
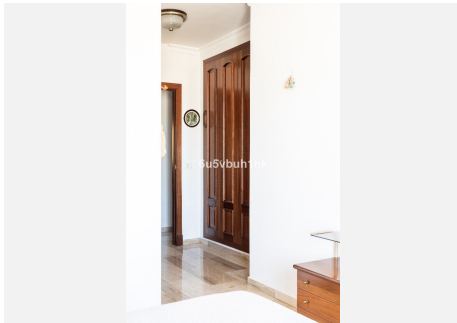
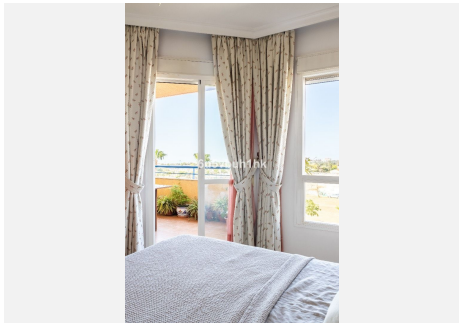
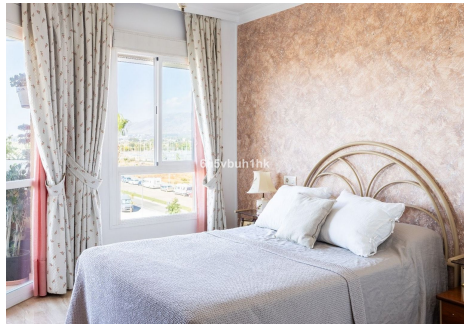
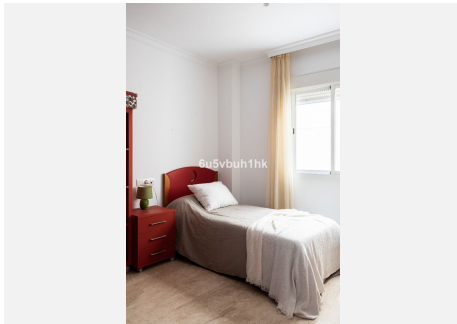
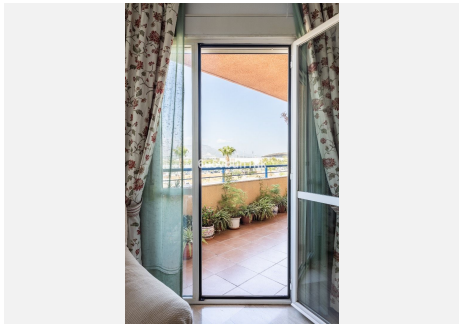
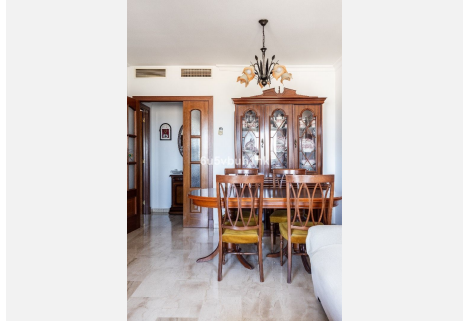
Discover the perfect location in one of the world's most admired cities. Málaga is renowned for its diversity, enriching the lives of all its residents. Yet, choosing where to live involves recognizing preferred characteristics. For instance, the flat and expansive spaces resulting from thoughtful urban planning enhance everyday mobility and contribute to a sense of well-being by avoiding the density and congestion seen in other areas. This neighborhood, developing at the end of the Paseo Marítimo and Calle Pacífico, is home to the latest and most luxurious new developments. It boasts convenient access to highways and the Málaga city center within minutes, as well as proximity to the Los Patos shopping center, schools, and both public and private healthcare facilities. The lifestyle here integrates outdoor activities with easy access to the seaside promenade and the Guadalhorce Park, an area ideal for hiking along the river, seamlessly connected to the sea. One of the standout features of this area is the sports hub, including the Martín Carpena Sports Palace, the Athletics Club, the swimming and racket sports complex, and soon, the Alfonso X University. This apartment is situated in a private gated community with a pool, paddle tennis court, and underground parking. It features three bedrooms and two bathrooms, including one en suite. With built-in wardrobes, high-quality finishes, and a terrace, it is oriented southwest to maximize sunlight and offers views of the sea, the Guadalhorce river, and, in the distance, the airport and the hills of Alhaurín de la Torre.

+34 951 123 083 | +44 (0)330 179 8687 | info@idiliqestates.com Local 28, Edificio D, Centro de Negocios Puerta de Banús, N-340, Km 175, 29660 Nueva Andlucia

IDILIQ

ESTATES

Choosing the right home ensures that each family member can thrive in safety and comfort. This opportunity is here, inviting you to be the main character in your story.



+34 951 123 083 | +34 (0)330 179 8687 | info@idiligestates.com | Local 28, Edificio D, Centro de Negocios Puerta de Banús, N-340, Km 175, 29660 Nueva Andlucia

IDILIQ

ESTATES

