

# IDILIQ

ESTATES



R4395133

 Torremolinos Centro

REF# R4395133 880.000 €

BEDS

4

BATHS

3

BUILT

304 m<sup>2</sup>

PLOT

657 m<sup>2</sup>

TERRACE

200 m<sup>2</sup>

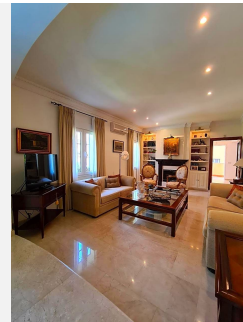
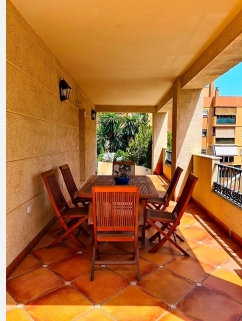
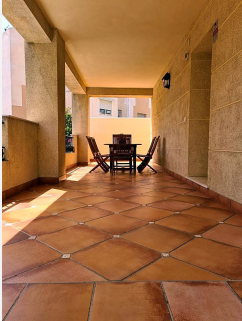
Beautiful detached villa completely refurbished and with an unbeatable location. Located just a few meters from the centre of Torremolinos, it is possible to walk to all the services of the city: Post office, supermarkets, shops, bars, restaurants, the train station... Everything is around and the beach can be reached in only 7 minutes walking. This is a unique property on the market that has everything you need to live comfortably and in a lot of space, both outside and inside. The villa has a plot of more than 650m<sup>2</sup> and through its independent entrance we arrive at a beautiful and enormous garden that surrounds the entire property. In this outdoor area there is also a private swimming pool and a large covered terrace where you can eat and enjoy the climate of the Costa del Sol. The villa has a surface of 304 m<sup>2</sup> distributed in only 2 floors, where we are welcomed by a large neoclassical style entrance with a large marble staircase. On the ground floor: one bedroom (today used as an office), huge living-dining room with fireplace, complete bathroom and large independent kitchen with dining area. On the first floor: 3 very spacious double bedrooms all with fitted wardrobes and 2 complete bathrooms (one en suite in the master bedroom). One of these bedrooms also has another very large terrace where there is sun all day long. Completing the property is a private garage for two cars with automatic door and plenty of storage space. There are few properties on the market that have so many good aspects: Brightness, qualities of the materials, impeccable

+34 951 123 083 | +44 (0)330 179 8687 | [info@idiliqestates.com](mailto:info@idiliqestates.com) Local 28, Edificio D, Centro de Negocios Puerta de Banús, N-340, Km 175, 29660 Nueva Andlucia

# IDILIQ

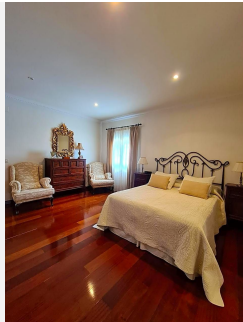
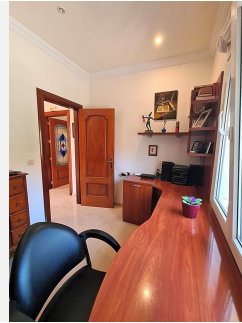
ESTATES

conditions, privacy and spaciousness of the spaces. This and much more is worth discovering with your eyes!



# IDILIQ

ESTATES



# IDILIQ

ESTATES

