



R5148427

📍 Los Alamos

REF# R5148427 743.000 €

BEDS

2

BATHS

1

BUILT

102 m<sup>2</sup>

TERRACE

10 m<sup>2</sup>

Looking to live by the sea in a prime location?

Close proximity to parks, schools, supermarkets, restaurants, and bars.

Easy access to the highway, with quick connections along the coast.

Just a 5-minute walk from Los Álamos train station and 6 minutes by car to Málaga airport.

Don't miss this opportunity to live in an unbeatable location with all the comforts at your fingertips!

This residential complex is located right on the beachfront, where you can lose yourself in its beautiful communal gardens and swim in the spacious pool, all just steps from the sea. A standout feature of the development is its private pedestrian access to the famous Torremolinos promenade.

You will literally live right on the beach!

This second-floor apartment is for sale, sharing the floor with only one other neighbor, offering plenty of peace and privacy. With a surface area of 102 m<sup>2</sup> and recently renovated with high-quality materials, it boasts an American-style kitchen, a spacious living-dining room with access to a cozy terrace that offers a

+34 951 123 083 | +44 (0)330 179 8687 | [info@idiliqestates.com](mailto:info@idiliqestates.com) Local 28, Edificio D, Centro de Negocios Puerta de Banús, N-340, Km 175, 29660 Nueva Andlucia

# IDILIQ

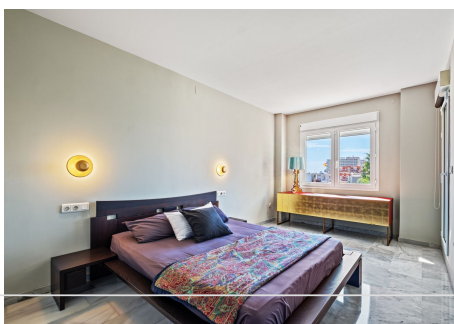
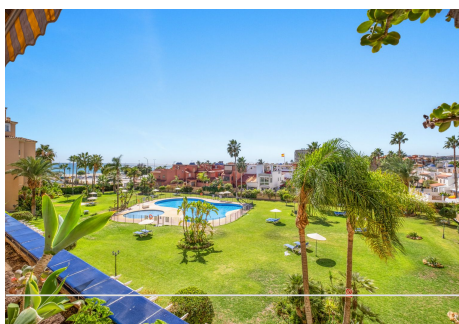
## ESTATES

unique opportunity to enjoy stunning Mediterranean views from the comfort of your home, 2 large bedrooms, the master being 20 m<sup>2</sup>. It also includes an elegant, newly-installed bathroom with a shower and hydromassage bathtub, perfect for relaxing after a day at the beach (originally 2 separate bathrooms, now renovated and transformed into a single, larger bathroom).

### Key features:

- Glass-enclosed terrace with Lumon curtains, perfect for enjoying the sun or shielding from the wind while taking in the sea views.
- Schmidt brand kitchen of top quality, completely new.
- Private garage with a brand-new automatic door and storage room.
- Newly installed automatic shutters in the bedrooms.
- Communal pool and garden, ideal for families.
- Elevator for added convenience.
- Direct access to the promenade from the development, making beachfront strolls easy.

Don't miss this opportunity and come visit!



+34 951 123 083 | +44 (0)330 179 8687 | [info@idiliqestates.com](mailto:info@idiliqestates.com) Local 28, Edificio D, Centro de Negocios Puerta de Banús, N-340, Km 175, 29660 Nueva Andlucia



# IDILIQ

ESTATES

