



R5025892

📍 Sotogrande Marina

REF# R5025892    899.000 €

BEDS

4

BATHS

5

BUILT

166 m<sup>2</sup>

TERRACE

34 m<sup>2</sup>

"New, spacious, bright and practical describe this apartment with 4 bedrooms en suite and a toilet.

It has a large American kitchen, with a huge island in one piece, for 8 people and where 10 can easily fit. Then begins the extensive living area, which by means of doors embedded in the wall integrates perfectly with the terrace, protected with glass curtains, along 10 linear meters, allows a panoramic view of the spectacular Marina de Sotogrande.

This integration allows to have a total ludic space of approximately 70 m2, either closed with air conditioning or heating, or open with a pleasant breeze and fans hidden in the lighting.

In addition to that, the 4 bedrooms are spacious and allow to have 2 single beds and two bureaux, in addition to a closet, desk and full bathroom.

It has a parking space large enough to accommodate 2 medium vehicles, or a large vehicle and a motorcycle. Its storage room is approximately 6 m2 and with excellent height.

+34 951 123 083 | +44 (0)330 179 8687 | [info@idiliqestates.com](mailto:info@idiliqestates.com) Local 28, Edificio D, Centro de Negocios Puerta de Banús, N-340, Km 175, 29660 Nueva Andlucia

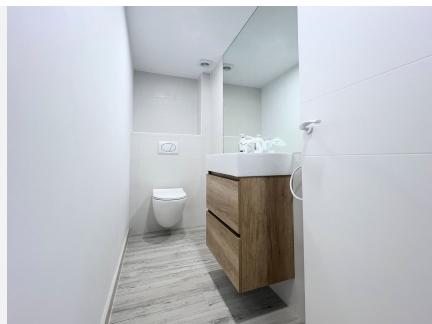
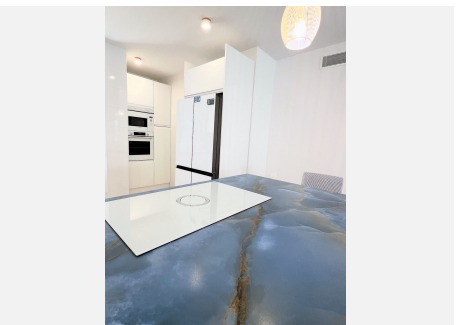
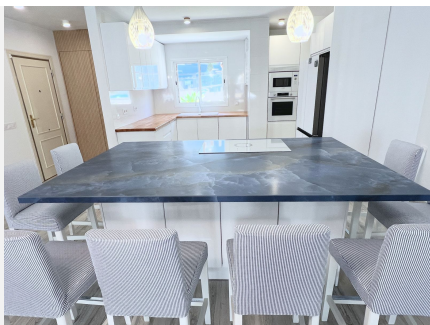
# IDILIQ

## ESTATES

To complete the experience, Sotogrande has a berth of 8x3.6, which is 5 meters from the exit door on the terrace.

The development in the center of the marina has a beautiful swimming pool ideal for all ages.

Everything in this apartment is new, air conditioning, electricity, plumbing, kitchen, appliances, bathrooms, closets, furniture."





# IDILIQ

ESTATES

