

# IDILIQ

## ESTATES



R4343554

📍 Monda

REF# R4343554 585.000 €

BEDS

6

BATHS

3

BUILT

395 m<sup>2</sup>

PLOT

5940 m<sup>2</sup>

TERRACE

85 m<sup>2</sup>

Beautiful and spacious country house just 2 minutes from the main road to Marbella. 395 m<sup>2</sup> built and incomparable views in Monda. 6 bedrooms, 3 bathrooms and private pool. This property, with a 5,940 m<sup>2</sup> plot, has a three-story country house built in 2006, where the main house is on the first floor and consists of a porch, hall, living room - dining room, kitchen with a large pantry, 4 bedrooms with fitted wardrobes, one of these with an en-suite bathroom with a bathtub and an excellent private terrace that enjoys great views, and additionally another family bathroom with a shower and bathtub. On the ground floor we have an independent apartment that consists of a living room - dining room, an integrated kitchen, 2 bedrooms and a bathroom. On this floor we also have one garage space and a large storage room. The second floor is currently used as an office and as an outlet for laundry tasks, and has access to a large solarium. The orientation is southeast, all the windows are Climalit with automatic shutters and security bars. It has oil central heating. The water is obtained from a 160 m deep well and the 150 liter water heater is electric. The outdoor areas include a 32 m<sup>2</sup> pool with separate barbecue area and toilet. And in the surroundings of these, and of the house itself, there are beautiful and well-kept gardens. The plot is planted mainly with avocados and olive trees, and also with various fruit trees, it has 90 avocado trees with a benefit of about €6,000 per year which can increase since the avocado trees are young. The access route is completely

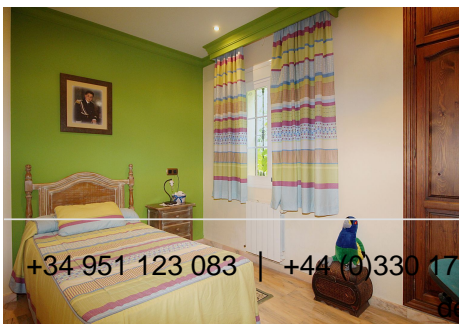
+34 951 123 083 | +44 (0)330 179 8687 | [info@idiliqestates.com](mailto:info@idiliqestates.com) Local 28, Edificio D, Centro de Negocios Puerta de Banús, N-340, Km 175, 29660 Nueva Andlucia



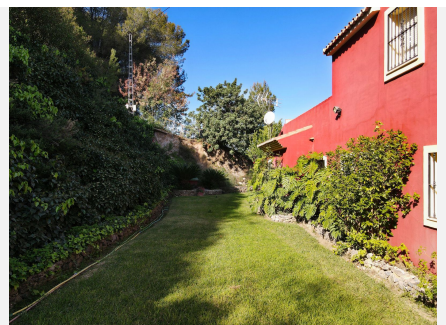
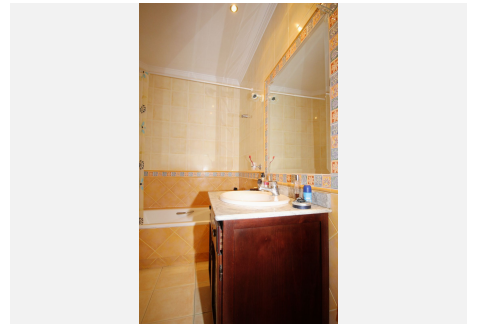
# IDILIQ

## ESTATES

paved. The center of Coín is only 8 minutes away and the center of Marbella is 25 minutes.









# IDILIQ

ESTATES

