



## GROUND FLOOR APARTMENT 2 BEDROOMS 2 BATHROOMS IN MANILVA

 Manilva

REF# R5427052 359.000 €

BEDS

2

BATHS

2

BUILT

90 m<sup>2</sup>

TERRACE

21 m<sup>2</sup>

Two bedrooms, open sea views and the convenience of ground-floor living within an established community close to Sotogrande.

Recently renovated, this apartment offers a practical layout and a location with easy access to the beach, golf courses and everyday amenities.

The living area is bright and open, connecting directly to the terrace and making the most of the property's orientation and views. Natural light fills the interior spaces throughout much of the day.

The property offers two bedrooms and two bathrooms, creating a comfortable layout for year-round living, holidays or extended stays on the coast.

# IDILIQ

ESTATES

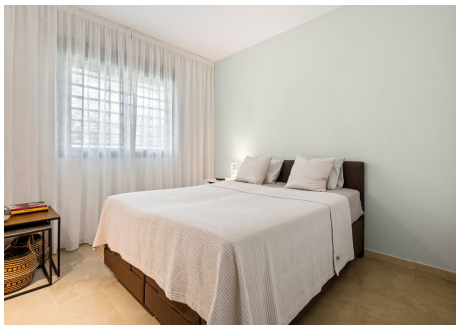
The recent renovation focused on functionality and comfort, with clean finishes and spaces designed for everyday use.

Residents enjoy access to a communal swimming pool surrounded by mature gardens, a paddle court and secure communal areas within a gated residential community.

The property also includes underground parking and a private storage room, practical features whether used as a permanent residence or a second home.

Sotogrande, its marina, golf courses and restaurants are all nearby, while Gibraltar, Estepona and Marbella can be reached easily by road.

Properties that combine sea views, outdoor space and a well-connected location close to Sotogrande continue to attract buyers looking for a home that can be enjoyed throughout the year.



# IDILIQ

ESTATES

