

R5413597

📍 Benahavís

REF# R5413597 1.695.000 €

BEDS

3

BATHS

3

BUILT

228 m²

TERRACE

81 m²

A refined duplex penthouse offering privacy, panoramic sea and golf views, and exceptional outdoor living in the sought-after community of Lomas del Marqués, Benahavís.

This south-west facing residence features three bedrooms, three bathrooms, bright open-plan interiors, and expansive terraces designed to maximise natural light and year-round enjoyment of the Costa del Sol lifestyle.

The highlight of the property is its private rooftop terrace with outdoor kitchen, creating the perfect setting for entertaining, dining, and enjoying spectacular sunsets overlooking the Mediterranean coastline and surrounding golf courses.

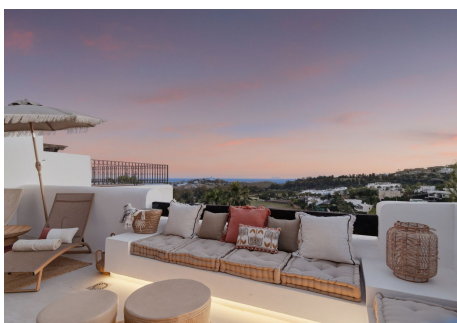
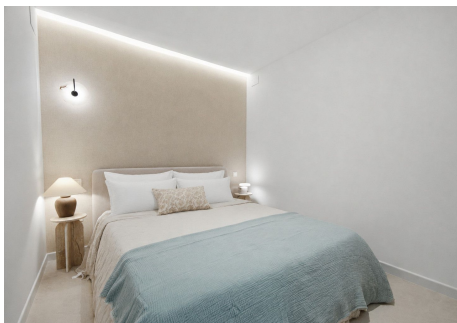
Set within a secure and beautifully maintained gated community, just minutes from golf courses, beaches, Marbella, Puerto Banús, and Benahavís, the property also includes private parking and storage.

More than a penthouse, this is a lifestyle-driven home designed for buyers seeking quality, privacy, and effortless Mediterranean living.

+34 951 123 083 | +34 (0)330 179 8687 | info@idiliqestates.com Local 28, Edificio D, Centro de Negocios Puerta de Banús, N-340, Km 175, 29660 Nueva Andalucía

IDILIQ

ESTATES



IDILIQ

ESTATES

