



R4298782

📍 Puerto Banús

REF# R4298782 1.160.000 €

BEDS

2

BATHS

2

BUILT

137 m²

TERRACE

35 m²

Apartment on the seafront, located in La Herradura de Banus, with direct access to the beach and spectacular views of the Mediterranean Sea, in the heart of Puerto Banus. The house is distributed in a large living room that has access to a covered terrace of about 35m², closed with glass curtains and facing East. Separate kitchen with utility room, large hall, two bedrooms with fitted wardrobes. Both with bathroom en suite. The main one with space for a dressing room. Includes storage room of 16 m. And underground parking space. By location it is in an exceptional place to live or for profitability with great potential. Located in the most prominent and well-known areas of Marbella, surrounded by all kinds of shops and high-end services. Do not hesitate to call us and arrange a visit or more information.

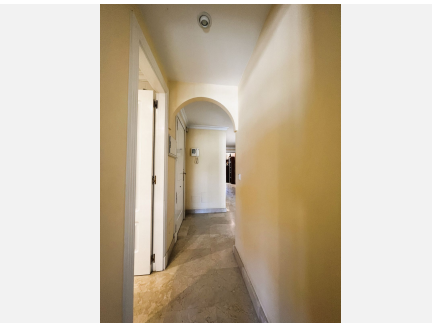
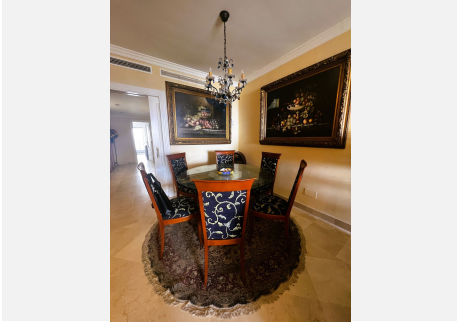
IDILIQ

ESTATES



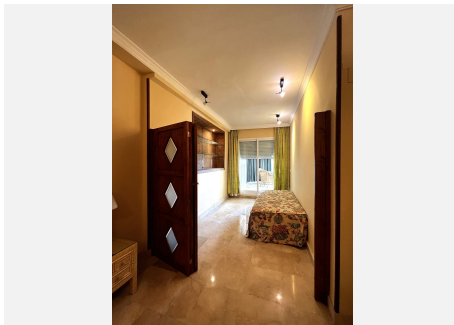
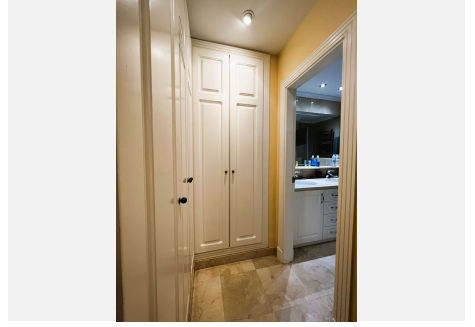
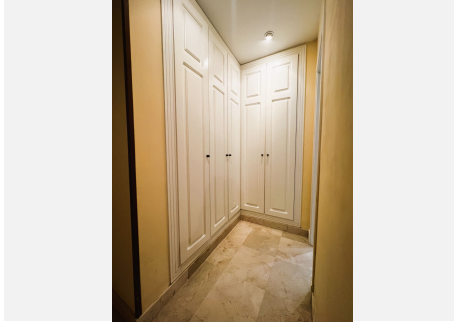
IDILIQ

ESTATES



IDILIQ

ESTATES



IDILIQ

ESTATES

