



SEMI-DETACHED HOUSE 4 BEDROOMS 3 BATHROOMS IN BENALMADENA PUEBLO

 Benalmadena Pueblo

REF# R5394469 410.000 €

BEDS

4

BATHS

3

BUILT

140 m²

TERRACE

30 m²

Beautiful four-storey townhouse located in one of the most charming areas of the village. this home combines Andalusian style with modern comfort.

Functional layout and spacious interiors:

Ground floor: private garage with space for two cars and one motorbike, with direct access to the property.

First floor: entrance hall, guest toilet, spacious living-dining room, independent kitchen, and a large rear patio ideal for family gatherings or relaxing moments.

Second floor: three bright bedrooms and two full bathrooms, one of them en suite in the master bedroom.

Third floor: a large open space with a private terrace and sea views, perfect as an office, games room, or guest bedroom.

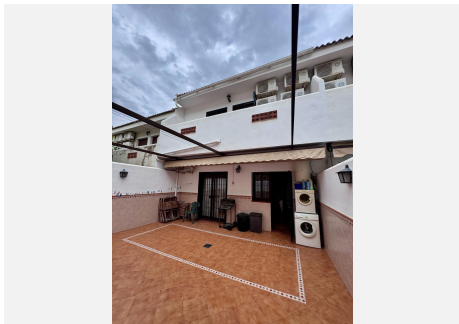
+34 951 123 083 | +44 (0)330 179 8687 | info@idiliqestates.com Local 28, Edificio D, Centro de Negocios Puerta de Banús, N-340, Km 175, 29660 Nueva Andlucia

IDILIQ

ESTATES

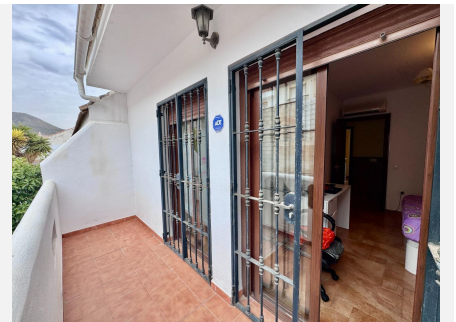
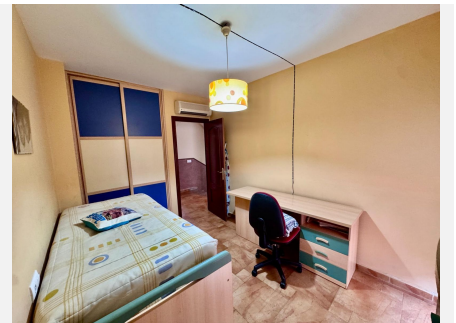
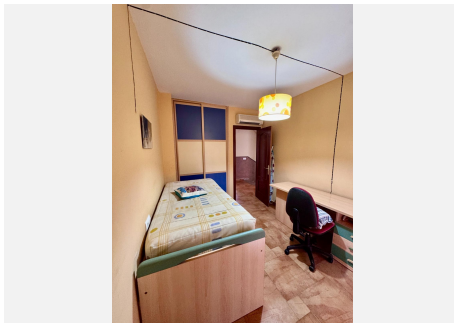
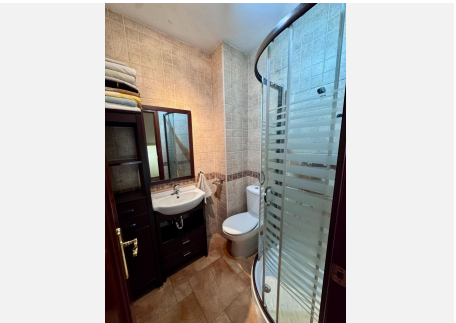
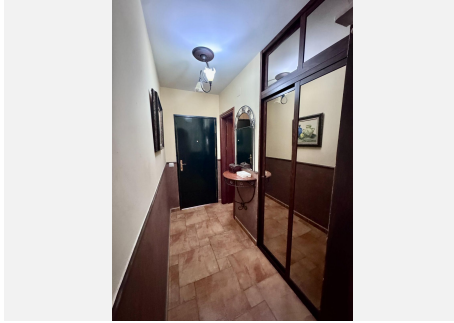
This property stands out for its brightness, spaciousness, and prime location. It includes a closed garage for two vehicles, a real advantage in Benalmádena Pueblo.

A unique opportunity for those seeking space, comfort, and Andalusian charm in one of the most desirable areas of the Costa del Sol. ?



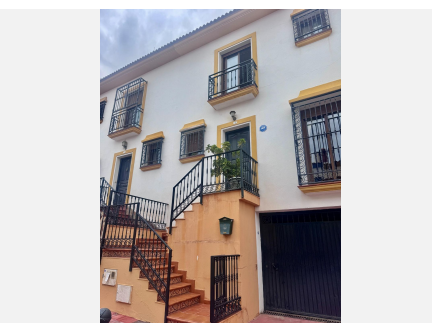
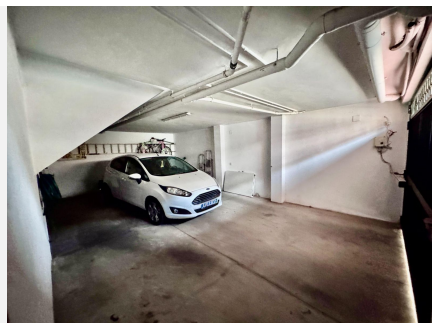
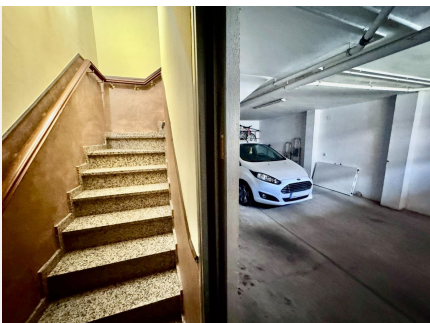
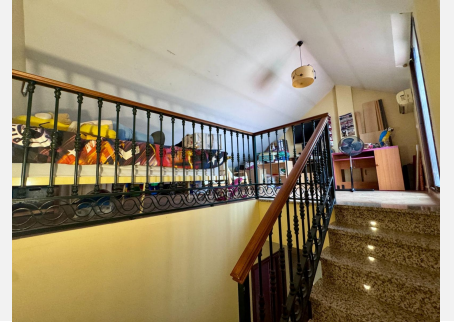
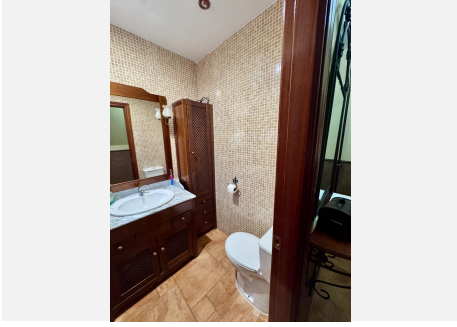
IDILIQ

ESTATES



IDILIQ

ESTATES



IDILIQ

ESTATES

