



R5042230

📍 Benalmadena

REF# R5042230 290.000 €

BEDS

2

BATHS

2

BUILT

90 m²

TERRACE

12 m²

In the heart of Arenal Golf, one of the most peaceful and sought-after areas of Benalmádena, lies this bright two-bedroom, two-bathroom apartment—ideal both as a permanent residence and as a second home by the sea. The property stands out for its well-thought-out layout and its pleasant 12 m² terrace, which offers unobstructed views of the golf course and the surrounding natural landscape.

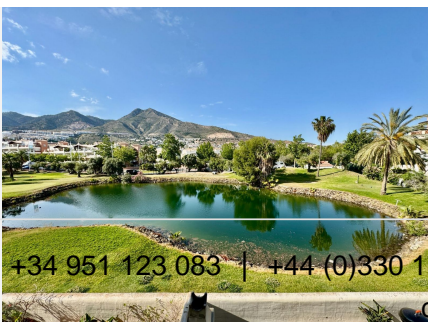
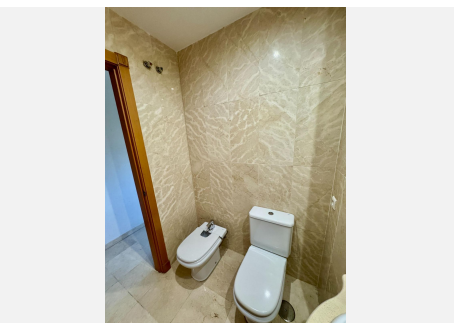
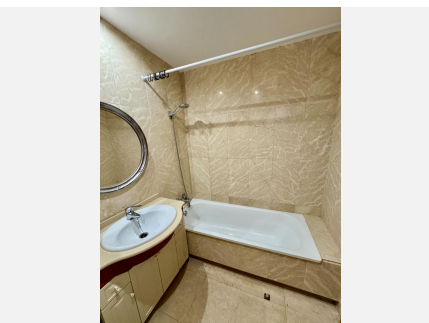
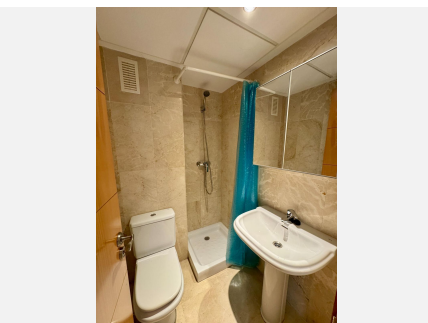
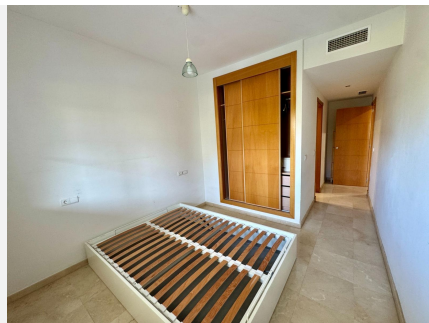
The apartment features a fully equipped kitchen, a living-dining room with direct access to the terrace, and two bedrooms with built-in wardrobes, the master being en-suite. Additionally, two parking spaces are included, adding extra value to the property.

It is located in a residential complex that provides everything needed to enjoy leisure time without leaving home: swimming pools for adults and children, landscaped gardens, children's play areas, paddle tennis courts, and a golf course just a few meters away. All of this in a safe environment, well-connected, close to schools, health centers, and with quick access to the motorway. Málaga Airport is just 12 minutes away, and the beach is less than a 5-minute drive.

IDILIQ

ESTATES

An ideal choice for those who value comfort, surroundings, and quality of life.



+34 951 123 083 | +44 (0)330 179 8687 | info@idiliqestates.com Local 28, Edificio D, Centro de Negocios Puerta de Banús, N-340, Km 175, 29660 Nueva Andalucía

IDILIQ

ESTATES

