



R5073355

 Benalmadena Costa

REF# R5073355    395.000 €

BEDS

4

BATHS

3

BUILT

120 m<sup>2</sup>

TERRACE

50 m<sup>2</sup>

Spacious townhouse spread over three floors, ideal for families seeking comfort, natural light, and an unbeatable location.

Ground floor:

Accessed through a large patio with a separate office or storage room. Inside, there is a spacious living-dining room with large windows and a fully equipped open-plan kitchen, as well as a guest toilet. The south-east orientation ensures light throughout the day.

First floor:

There are two bedrooms with fitted wardrobes and a private terrace in each, as well as a full bathroom with a shower.

Top floor:

There are two more bedrooms, also with fitted wardrobes and terraces, as well as a second bathroom with a shower. Sea views can be enjoyed from this floor.

+34 951 123 083 | +44 (0)330 179 8687 | [info@idiliqestates.com](mailto:info@idiliqestates.com)    Local 28, Edificio D, Centro de Negocios Puerta de Banús, N-340, Km 175, 29660 Nueva Andlucia

## Extras and common areas:

The home has two separate entrances, one of which is next to its assigned parking space at the foot of the home, ideal for easy entry with purchases.

It is located in a quiet, family-friendly residential area with gardens, two swimming pools (for adults and children), private community parking, and a deeded parking space.

## Location:

Located next to the Tivoli, just a 4-minute walk from the train station and the center of Arroyo de la Miel.

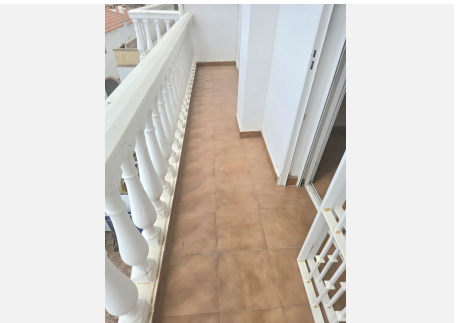
The home is in perfect condition and ready to move into. A unique opportunity to enjoy quality of life in a prime area of the Costa del Sol!





# IDILIQ

ESTATES





# IDILIQ

ESTATES

