



## GROUND FLOOR APARTMENT 2 BEDROOMS 2 BATHROOMS IN LA DUQUESA

 La Duquesa

REF# R5021128    325.000 €

BEDS

2

BATHS

2

BUILT

110 m<sup>2</sup>

TERRACE

12 m<sup>2</sup>

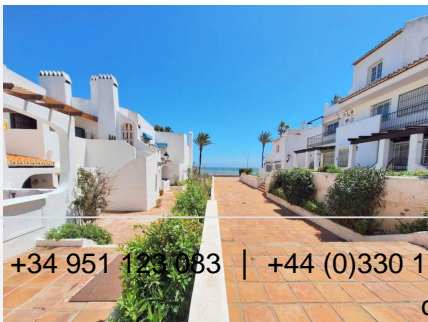
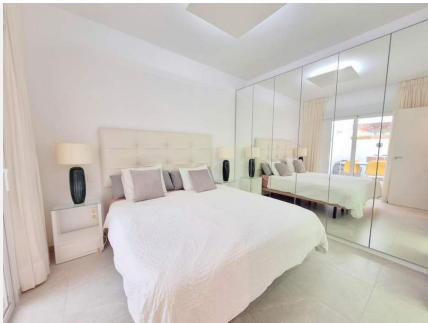
**\*\*\*Exquisite Beach Living\*\*\*** For those who crave a prime frontline location that seamlessly blends the chic allure of contemporary open-plan design with the timeless charm of Andalusian style, this fully renovated 2-bedroom, 2-bathroom property is an absolute must-see. From the moment you step through the private gate, you are greeted by a sun-drenched, south-facing terrace—a true haven for soaking up the rays. Inside, the space opens up into a luxurious, open-plan living area, where every inch has been thoughtfully redesigned with new flooring, sleek finishes, and a refined aesthetic. The owner has expertly transformed the internal courtyard, now featuring a striking sail canopy and a stunning glass ceiling, creating an intimate dining area that's nothing short of spectacular. The newly appointed kitchen takes center stage with its designer island and smart, space-saving storage solutions—perfect for culinary enthusiasts and entertainers alike. Both bedrooms offer the ultimate in comfort, each boasting an en-suite bathroom with walk-in showers and generous wardrobe space. In addition to its aesthetic beauty, the home is fully equipped with modern comforts, including air conditioning and underground parking for ultimate convenience. This property is more than just a home; it's a stylish sanctuary in the heart of Duquesa, where every detail has been curated for

+34 951 123 083 | +44 (0)330 179 8687 | [info@idiliqestates.com](mailto:info@idiliqestates.com) Local 28, Edificio D, Centro de Negocios Puerta de Banús, N-340, Km 175, 29660 Nueva Andlucia

# IDILIQ

ESTATES

those who appreciate both character and modern luxury.



+34 951 123 083 | +44 (0)330 179 8687 | [info@idiliqestates.com](mailto:info@idiliqestates.com) Local 28, Edificio D, Centro de Negocios Puerta de Banús, N-340, Km 175, 29660 Nueva Andlucia