

IDILIQ

ESTATES



R4708783

 Benalmadena

REF# R4708783 375.000 €

BEDS

2

BATHS

2

BUILT

85 m²

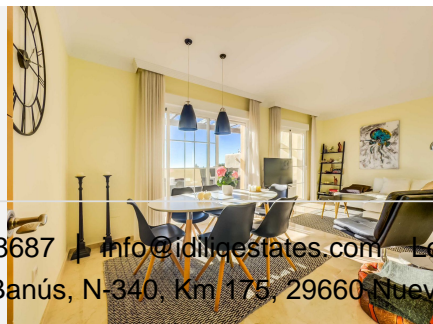
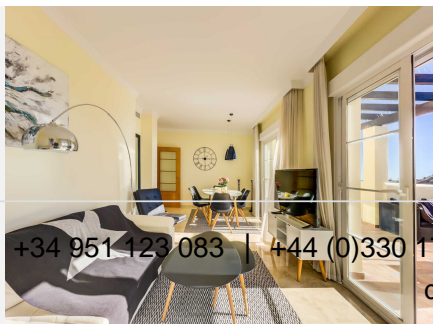
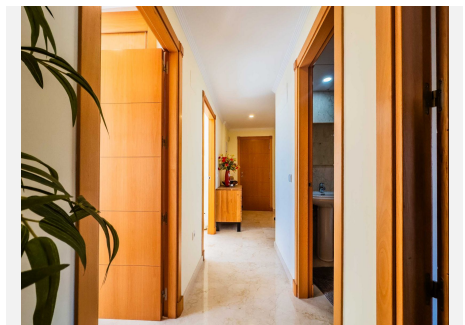
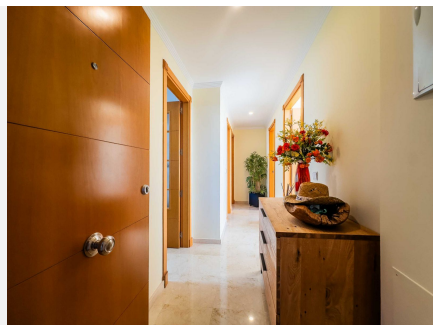
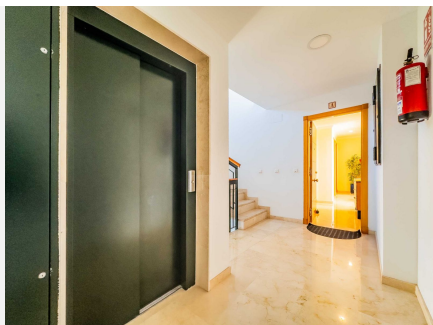
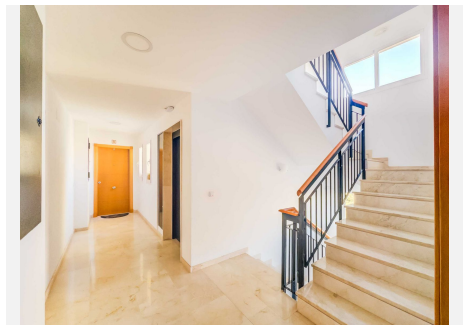
Penthouse, Benalmadena, Costa del Sol. 3 Bedrooms, 2 Bathrooms, Built 85 m². Setting : Close To Golf, Close To Shops, Close To Sea, Close To Town, Close To Schools, Close To Marina, Urbanisation. Orientation : South East, South. Condition : Good. Pool : Communal, Children`s Pool. Climate Control : Air Conditioning, Hot A/C, Cold A/C, Central Heating. Views : Sea, Mountain, Golf, Country, Panoramic, Garden, Pool, Courtyard. Features : Lift, Fitted Wardrobes, Near Transport, Private Terrace, Storage Room, Utility Room, Ensuite Bathroom, Marble Flooring, Double Glazing, Fiber Optic. Furniture : Fully Furnished. Kitchen : Fully Fitted. Garden : Communal. Security : Gated Complex. Parking : Underground, Covered. Utilities : Electricity, Drinkable Water. Category : Investment. Great investment opportunity! Must be seen. This fantastic and bright south facing penthouse apartment is located in Benalmádena Costa, very close to all amenities you need. The apartment Consists of 2 bedrooms with fitted wardrobes, the master bedroom with access to the south facing terrace and Great investment opportunity! Must be seen. This fantastic and bright south facing penthouse apartment is located in Benalmádena Costa, very close to all amenities you need. The apartment Consists of 2 bedrooms with fitted wardrobes, the master bedroom with access to the south facing terrace... and the other bedroom with access to north facing balcony, 2 bathrooms, one of them "en -suite", bright living/dining room with direct access to the terrace , fully equipped kitchen, laundry

+34 951 123 083 | +44 (0)330 179 8687 | info@idiliqestates.com Local 28, Edificio D, Centro de Negocios Puerta de Banús, N-340, Km 175, 29660 Nueva Andlucia

IDILIQ

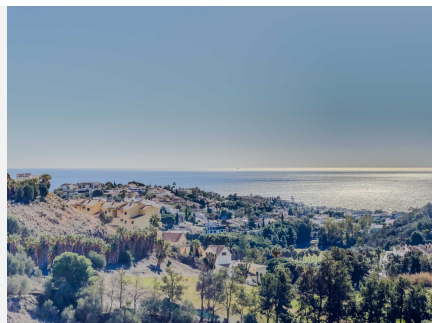
ESTATES

room, 2 spacious terraces, one of them south-facing with stunning views over the Mediterranean Sea, mountains and the green garden with two swimming pools, and the other one north-facing with mountain views. There are 2 private underground parking spaces, and a spacious storage room in the basement for this apartment. The apartment building offers 2 community pools surrounded by a beautiful and well-maintained garden and green lawns. The building is gated for high security. Lift in the building. The entire apartment is furnished with comfortable furniture and the apartment is sold fully furnished. Amenities: 2 parking spaces Storage room Laundry room Fully furnished Marble floor Double glazed windows Aircon 2 Community pools Community garden Elevator The location is perfect. Tranquil at night hours, yet very close to all what you need. There are several golf courses very close to the apartment. Bus stop: 500 m Beach: 2 km Malaga airport: 13 km Benalmadena Costa:2 km Benalmadena Pueblo:2 km Arroyo de la Miel: 2 km



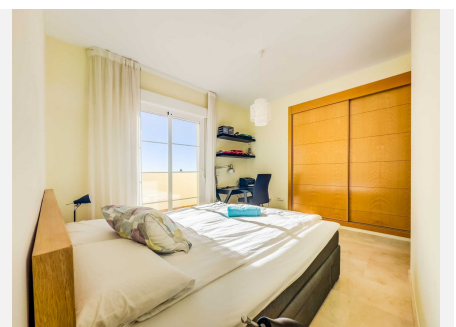
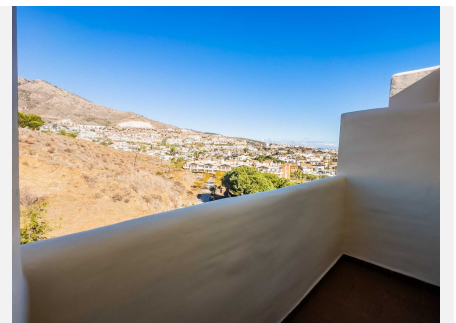
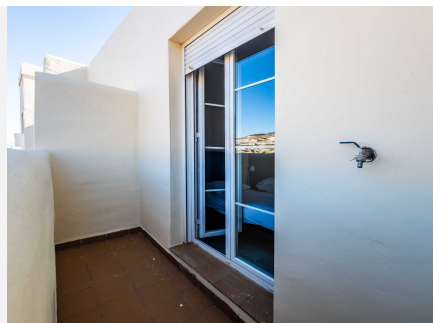
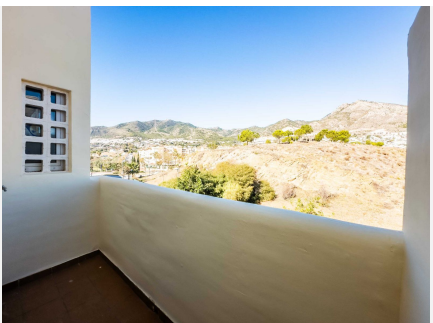
IDILIQ

ESTATES



IDILIQ

ESTATES



IDILIQ

ESTATES

