



R4783228

📍 Manilva

REF# R4783228 290.000 €

BEDS

2

BATHS

2

BUILT

100 m<sup>2</sup>

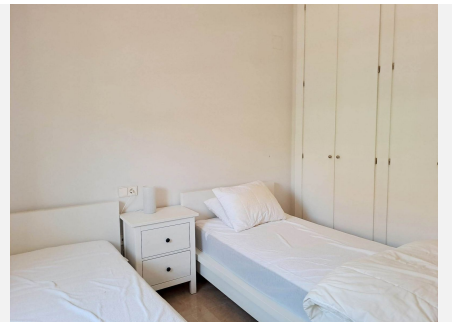
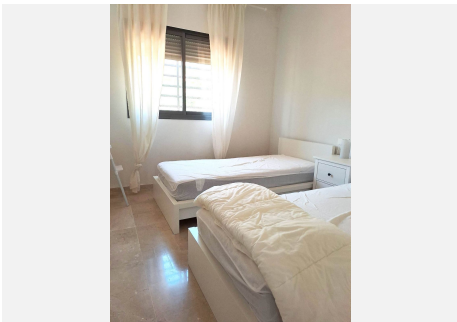
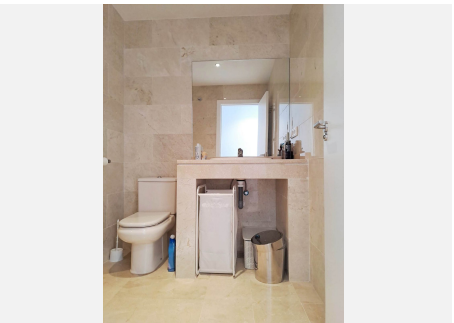
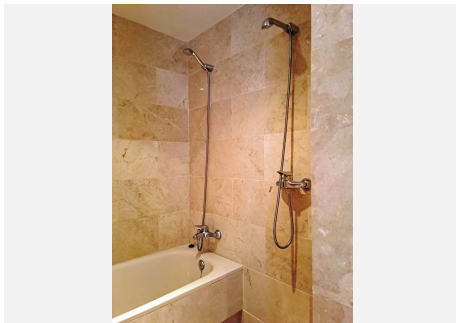
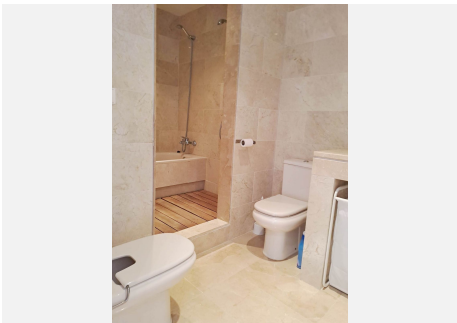
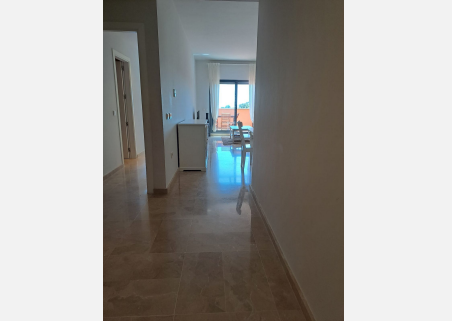
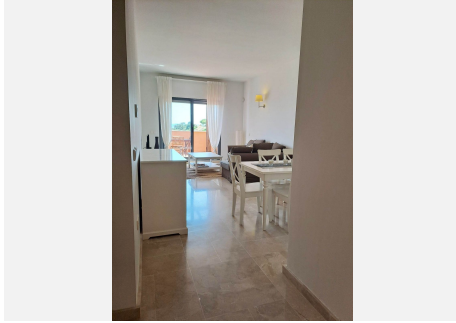
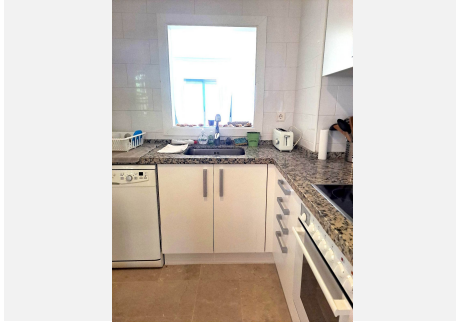
TERRACE

20 m<sup>2</sup>

In the south of the province of Málaga, just a few minutes from the superb Marina de Sotogrande, in the Bahía de las Rocas/La Paloma district. This beautiful residential complex offers magnificent flower-filled gardens, a large swimming pool and, for sports enthusiasts, a paddle tennis court (with no noise disturbance). The flat comprises a large entrance hall, a bright and spacious living room with access to a 20m<sup>2</sup> south-facing terrace offering breathtaking views of the surrounding countryside, the Mediterranean Sea and Gibraltar (view guaranteed), a semi-open, fully-fitted and furnished kitchen with a large adjoining utility room, two double bedrooms with large built-in wardrobes, and two full bathrooms, one of which (with shower and bath) is en-suite with the master bedroom with access to the terrace. . The price includes an underground parking space for a large vehicle and a cellar (+/-5m<sup>2</sup>). The property is sold furnished and equipped so that you can enjoy it as soon as you move in. All that's required is a little freshening-up of the paintings and a few small items of decoration. Don't hesitate to come and visit this little piece of paradise!

# IDILIQ

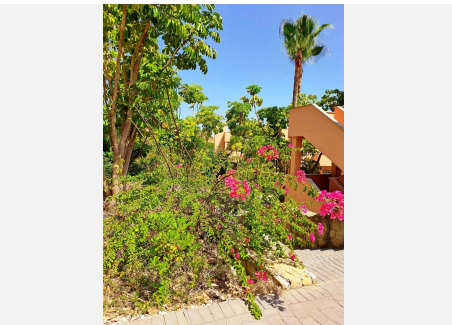
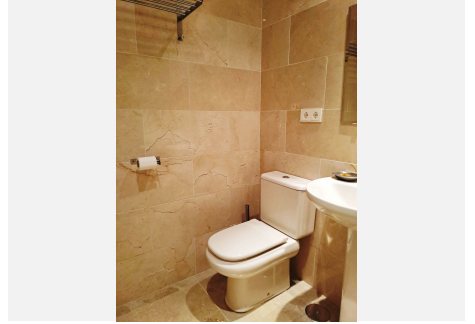
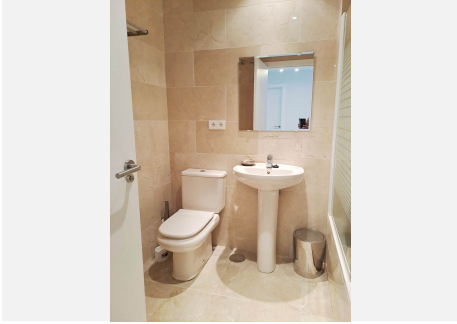
ESTATES





# IDILIQ

ESTATES



# IDILIQ

ESTATES

