



## MIDDLE FLOOR APARTMENT 3 BEDROOMS 3 BATHROOMS IN MANILVA

 Manilva

REF# R5306536 380.000 €

BEDS

3

BATHS

3

BUILT

160 m<sup>2</sup>

TERRACE

35 m<sup>2</sup>

Panoramic Sea View Apartment in La Paloma, Manilva

3 Bedrooms | Spacious Terrace | 2 Underground Parking Spaces + Storage Room

Located in the exclusive gated complex Nueva Paloma, in the prestigious area of La Paloma, this elegant apartment perfectly combines space, privacy, and open views of the Mediterranean Sea.

Just a five-minute drive from the beach and the lively Puerto de la Duquesa, the property offers a relaxed lifestyle surrounded by nature while remaining conveniently close to all amenities.

\*\*\* Layout & Living Spaces

The property welcomes you with an entrance hall featuring built-in wardrobes, leading into a spacious and bright living-dining area. This space opens onto a spectacular private covered terrace with premium teak

wood finishes, where breathtaking panoramic sea views can be enjoyed.

The fully independent kitchen is equipped with Bosch appliances and includes a separate utility/laundry room.

The master bedroom stands out for its elegance and comfort, offering garden views, a walk-in dressing area at floor level, and an en-suite bathroom with double vanity sinks and sophisticated teak and marble finishes.

The two guest bedrooms are generously sized doubles, with fitted wardrobes and large windows overlooking the landscaped green areas. The property also features two full bathrooms, ensuring maximum comfort and privacy.

### \*\*\* Specifications & Features

High-quality finishes include:

- \* Reinforced security door
- \* Smooth walls
- \* Floor-to-ceiling windows with double glazing
- \* Centralised hot and cold air conditioning
- \* Premium teak wood and marble finishes
- \* \*\*Roca\*\* sanitary fittings
- \* High-end appliances

The apartment includes two adjacent underground parking spaces and a private storage room.

### \*\*\* Resort-Style Communal Areas

The complex offers facilities designed to make the most of the area's privileged climate:

- \* Outdoor swimming pool with sunbathing area and loungers
- \* Heated indoor swimming pool with changing rooms
- \* Fully equipped gourmet/social area
- \* 24-hour security with video surveillance
- \* Concierge service
- \* Extensive landscaped gardens with park and outdoor gym

### \*\*\* Strategic Location

Approximately five minutes by car from Playa de Chullera, the exclusive Marina de Sotogrande, Puerto de la Duquesa, and La Duquesa Golf, as well as all essential services.

Marbella, Puerto Banús, and Gibraltar International Airport are just 25 minutes away by car. The property is also well connected to Málaga-Costa del Sol Airport and María Zambrano Station, both less than one hour away.

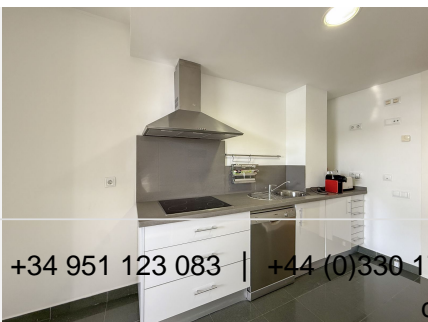
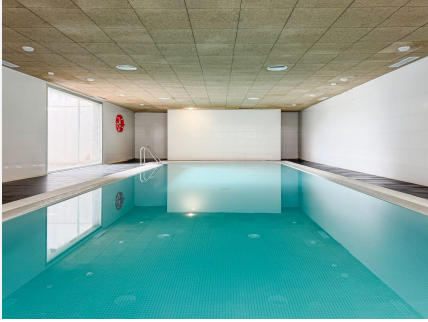
An exceptional opportunity to acquire a spacious, elegant sea-view apartment in one of the most sought-after areas of the Costa del Sol.



# IDILIQ

ESTATES

For further information or to arrange a private viewing, please do not hesitate to contact us.



+34 951 123 083 | +44 (0)330 179 8687 | [info@idiliqestates.com](mailto:info@idiliqestates.com) Local 28, Edificio D, Centro de Negocios Puerta de Banús, N-340, Km 175, 29660 Nueva Andalucía

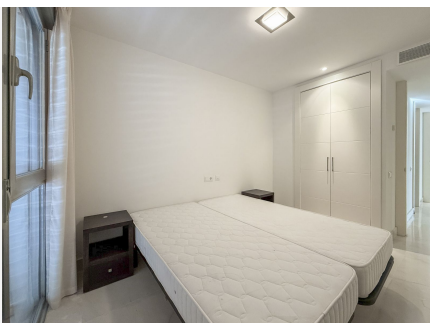
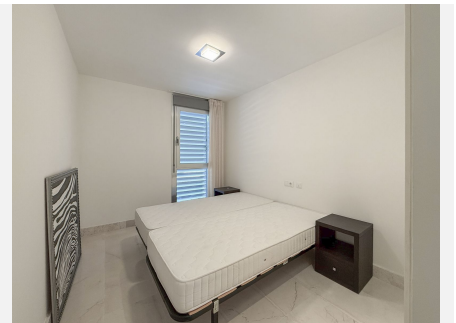
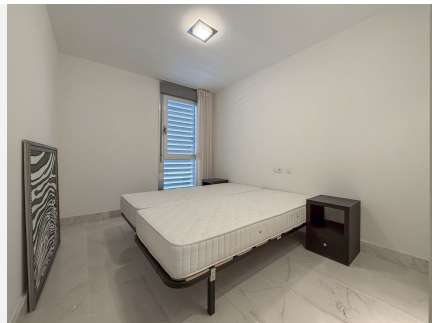


# IDILIQ

ESTATES









# IDILIQ

ESTATES

