



R4914607

📍 Manilva

REF# R4914607 395.000 €

BEDS

2

BATHS

2

BUILT

135 m²

TERRACE

30 m²

Penthouse with Spectacular Sea Views in La Paloma 2 Bedrooms | Resort-Style Complex | High-End Finishes Discover this stunning penthouse with breathtaking panoramic views of the Mediterranean coastline, ideally situated in La Paloma, between Sotogrande and Manilva. This prime location offers convenient access to the beach (just a 5-minute drive or a scenic 25-minute walk) and nearby amenities, making it perfect for a luxurious coastal lifestyle. Property Highlights Living Spaces: Step into a bright and welcoming hall that flows seamlessly into the spacious living and dining area, where large windows frame stunning sea views. The fully fitted kitchen, equipped with top-quality appliances, includes a utility room for added convenience. For those who prefer open-plan living, the kitchen can be easily integrated with the living area, creating a modern and functional space. Private Terrace: The expansive private terrace, finished with elegant Teka wood flooring and walls, is perfect for sunbathing, hosting al fresco dinners, or simply soaking in the mesmerizing sea views. Bedrooms: • Master Suite: Generously sized, featuring a walk-in wardrobe and a luxurious en-suite bathroom with Teka finishes. Enjoy tranquil views of the lush gardens and park from this serene retreat. • Guest Bedroom: A bright and spacious double bedroom with floor-to-ceiling windows and lovely garden views. Bathrooms: In addition to the en-suite, a stylish guest bathroom serves the second bedroom and visitors, ensuring comfort and convenience for all. High-Quality

+34 951 123 083 | +44 (0)330 179 8687 | info@idiliqestates.com Local 28, Edificio D, Centro de Negocios Puerta de Banús, N-340, Km 175, 29660 Nueva Andlucia

IDILIQ

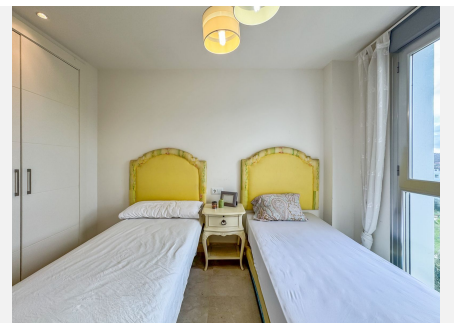
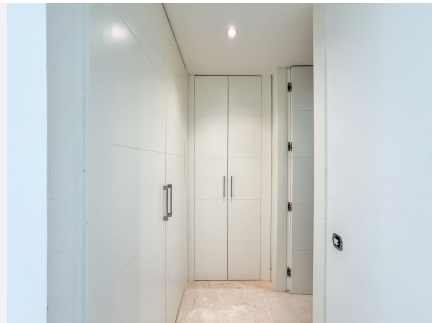
ESTATES

Specifications: This penthouse boasts premium features, including: • Elegant Teka wood finishes • Double-glazed aluminum windows • Polished marble floors • Smooth walls • Fitted wardrobes • Reinforced entry door • Underground parking space and storage unit Resort-Style Urbanization Experience unparalleled leisure and security in this gated community: • Infinity outdoor pool with panoramic views • Heated indoor pool for year-round enjoyment • Gourmet area with a communal kitchen and dining space overlooking the pool • Green lawns and landscaped gardens • Outdoor fitness area and park • Elevator access to all levels • 24/7 surveillance and security cameras All of this comes with surprisingly low community fees (less than €200/month), offering excellent value for money. Why Choose This Property? This penthouse is a rare gem, combining elegant living spaces, premium amenities, and a location in one of the most sought-after areas on the Costa del Sol. With property values in this area on the rise, it's also an excellent investment opportunity. Don't miss the chance to own this slice of paradise. Contact us today for more information or to arrange a private viewing.



IDILIQ

ESTATES



IDI LIQ

ESTATES

