



R5428042

 Costabella

REF# R5428042 6.500.000 €

BEDS

6

BATHS

4

BUILT

420 m²

PLOT

820 m²

TERRACE

176 m²

This splendid beachfront property in Costabella is a newly-built masterpiece, designed to the highest standards by renowned Marbella architect, Jose Carlos Moya. This modern gem boasts six bedrooms and five bathrooms, displaying a perfect blend of sophistication and simplicity. Situated to the southwest, it offers breathtaking sea views and picturesque sunsets. The innovative use of wood, glass, stone, and concrete has resulted in an exceptional family home.

Upon entering the property, you'll be greeted by a spacious double-height entrance hall, leading to an expansive living room with a dining area and a generously equipped open-plan kitchen, featuring the latest in modern appliances. The kitchen provides access to a small hallway with a separate side door leading to the driveway. On the beachfront side, both the kitchen and the living room open up to a decked terrace and a heated swimming pool through large sliding doors equipped with electric security blinds. A path from the pool area leads directly through the sand dunes to the beach. The meticulously landscaped private dune area offers complete seclusion for the relaxation and dining areas on the terrace. The entrance level also includes a guest bedroom with fitted wardrobes and a walk-in wardrobe, along with a bathroom featuring a

IDILIQ

ESTATES

shower, toilet, and basin.

Moving to the first floor, you'll find the master bedroom, featuring two sets of wardrobes and a master bathroom with a shower, spacious double basin, toilet, and access to the terrace. Two more bedrooms and a shared bathroom with a shower, toilet, and basin are located on this floor. Each of these bedrooms offers direct access to the sea-facing terrace, providing stunning beach views.

For those seeking breathtaking panoramic views, the rooftop terrace is an absolute treat, complete with fitness equipment, a pergola, and an unobstructed 360-degree view of the surroundings.

The lower floor level, or basement floor, houses two additional double bedrooms with natural light, fitted wardrobes, and a bathroom with a basin, shower, and toilet. This level also features a spa area with a Jacuzzi bath, steam bath, sauna, and showers, as well as storage rooms and a utility room. An elevator and an oak staircase with glass railings serve each floor of this exceptional property.

In the local area, you'll find a wide range of leisure and recreational activities, including shopping centers, restaurants, nightlife, water parks, golf courses, hiking trails, water sports, and much more, ensuring an exciting and vibrant lifestyle for all residents.



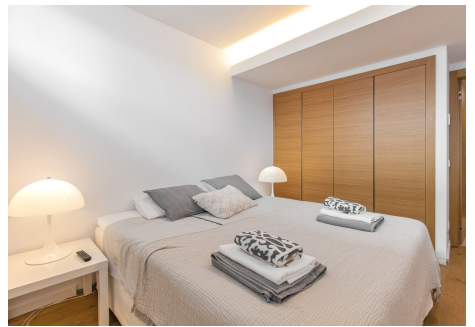
IDILIQ

ESTATES



IDILIQ

ESTATES



IDILIQ

ESTATES

