



R5427289

📍 Sotogrande Alto

REF# R5427289 6.900.000 €

BEDS

5

BATHS

5

BUILT

1100 m²

TERRACE

200 m²

Exclusive Newly Built Villa Adjacent to La Reserva Club Golf Course, Sotogrande

Discover this exceptional newly built villa, ideally located in one of Sotogrande's most prestigious residential areas, next to the renowned La Reserva Club Golf Course. A remarkable home where contemporary architecture, privacy and the surrounding natural landscape come together to create an exceptional lifestyle.

Designed to blend seamlessly with the Mediterranean surroundings, the villa is defined by its clean architectural lines, generous open-plan living spaces and impressive floor-to-ceiling windows that flood every room with natural light while creating a seamless connection between indoor and outdoor living.

Arranged over three spacious levels, the property has been carefully designed to offer the highest standards of comfort, functionality and modern living. The impressive main living area opens directly onto the terraces and swimming pool, creating an outstanding space for entertaining and enjoying the Mediterranean climate throughout the year. The designer kitchen, featuring a central island and premium-quality finishes, integrates perfectly with the main living area.

+34 951 123 083 | +44 (0)330 179 8687 | info@idiliqestates.com Local 28, Edificio D, Centro de Negocios Puerta de Banús, N-340, Km 175, 29660 Nueva Andlucia

IDILIQ

ESTATES

The villa offers six spacious bedrooms, each with its own en-suite bathroom, together with a private office, laundry room and extensive storage areas. The magnificent principal suite provides a private retreat with privileged views over the surrounding natural landscape.

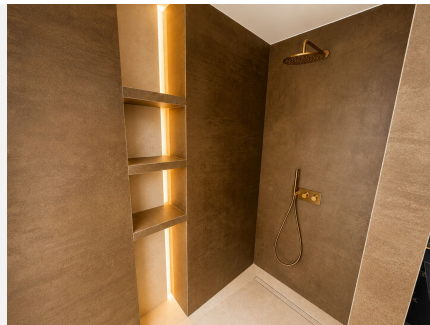
Outside, the expansive terraces, private swimming pool and landscaped gardens become a natural extension of the home, offering the perfect setting to enjoy Sotogrande's exceptional year-round climate and open views across the golf course and the surrounding countryside.

Built using premium materials and equipped with the latest energy-efficient technologies and climate control systems, this outstanding villa represents a unique opportunity for those seeking an exclusive residence within one of Southern Europe's most prestigious residential communities.



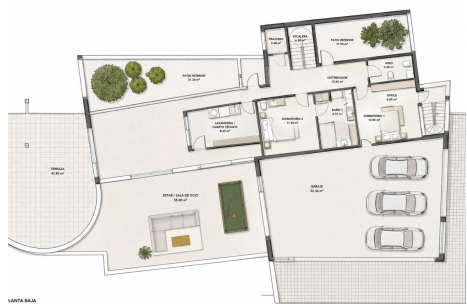
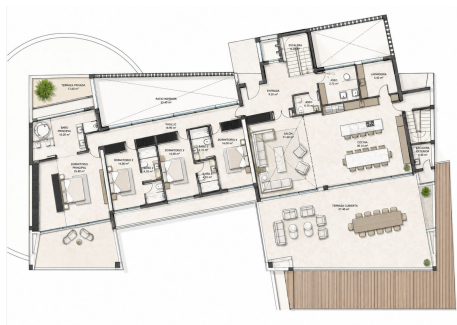
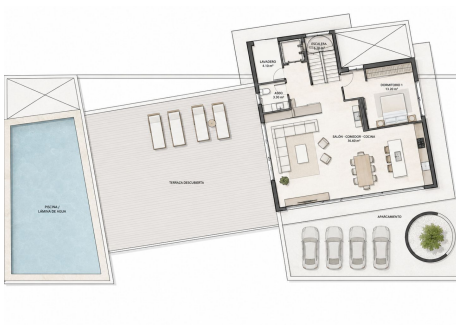
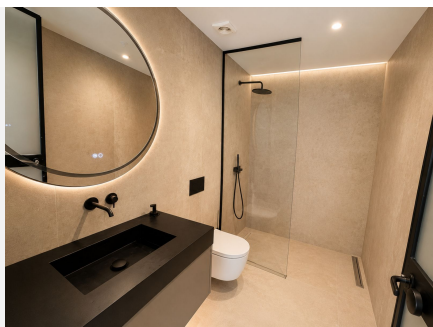
IDILIQ

ESTATES



IDILIQ

ESTATES



LAVAS BUB
SUPERFICIE CONSTRUIDA: 228.62 m²