



R5426872

📍 Cancelada

REF# R5426872 650.000 €

BEDS

3

BATHS

3

BUILT

152 m<sup>2</sup>

TERRACE

58 m<sup>2</sup>

**Stylish Corner Townhouse with Panoramic Mountain Views in Cancelada – New Build with Solarium, Terrace & High-End Upgrades**

Welcome to this stunning corner townhouse with panoramic mountain views, located in a contemporary new development in Cancelada, one of Estepona's fastest-growing areas. Just minutes from the beach by car and close to all essential services, this property offers the perfect blend of modern design, comfort, and strategic location.

**Modern Layout & Open Spaces**

Spread over three floors plus a rooftop solarium, this bright and spacious home enjoys exceptional natural light thanks to its corner position and large windows.

On the main floor, you'll find an open-plan kitchen with a central island finished in exposed concrete for an elegant industrial touch, seamlessly connected to a bright living-dining area. A custom storage closet and guest toilet have been added, and from the living room, you have direct access to a large terrace with breathtaking mountain views — perfect for outdoor dining or relaxing.

**Comfortable Sleeping Quarters with Designer Touches**

The second floor features three bedrooms. Two guest bedrooms share a bathroom in the hallway, while the

# IDILIQ

ESTATES

master suite includes an en-suite bathroom upgraded with glass shower screens and a custom vanity unit, a walk-in wardrobe, and a double built-in wardrobe. Decorative concrete accents on the wall separating the rooms add a cohesive design element throughout the home.

## Rooftop Solarium for Sunset Views

On the top floor, the fully furnished solarium is ideal for enjoying evenings under the stars or sunsets with panoramic views. Equipped with a retractable awning, and pre-installed water and electrical connections, it's ready for an outdoor kitchen or chill-out area.

## High-Quality Finishes & Extras Included

This immaculate home has been enhanced with premium upgrades:

- \*LED lighting in the living area
- \*Designer black switches and power outlets
- \*Decorative concrete details
- \*Designer furniture included in the sale
- \*2 Parking spaces, storage room & Premium Amenities

Includes two parking spaces

Residents also enjoy access to a full range of community amenities, including:

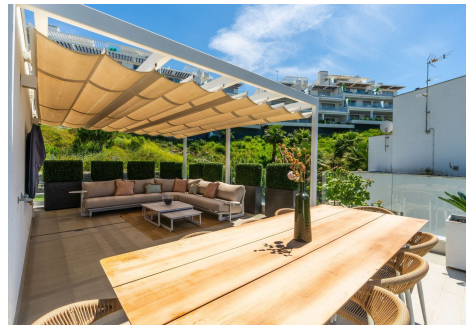
- \*Outdoor swimming pool
- \*Exclusive social club with gym
- \*Heated indoor pool
- \*Sauna
- \*Coworking area
- \*Café

A truly unique property in terms of location, design, and quality — ideal as a permanent residence or investment on the Costa del Sol.



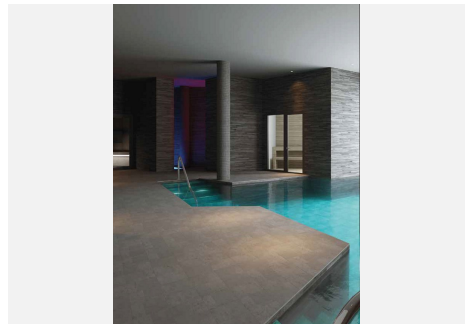
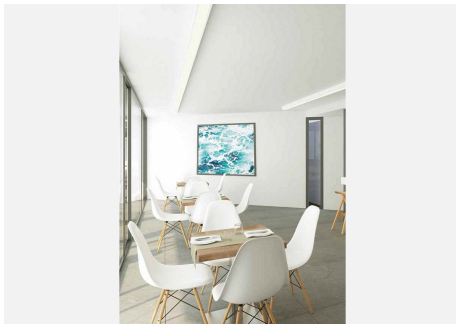
# IDILIQ

ESTATES



# IDILIQ

ESTATES



# IDILIQ

ESTATES

