



MIDDLE FLOOR APARTMENT 2 BEDROOMS 2 BATHROOMS IN BENALMADENA

 Benalmadena

REF# R5425192 439.000 €

BEDS

2

BATHS

2

BUILT

93 m²

TERRACE

27 m²

Modern New-Build Apartment with Panoramic Sea Views in Benalmádena

Discover exceptional Mediterranean living in this stunning brand-new apartment with breathtaking panoramic sea views, located in the prestigious Blossom II development in Benalmádena.

Designed for modern comfort and style, this elegant property offers 2 spacious bedrooms, 2 contemporary bathrooms, and bright open-plan living spaces that seamlessly connect to a spectacular 23 m² terrace. From here, you can enjoy uninterrupted views of the Mediterranean Sea, stunning sunrises, and unforgettable sunsets all year round.

Property Features

- * 2 Bedrooms
- * 2 Bathrooms
- * 93 m² built area
- * 69 m² usable interior area
- * 23 m² private terrace with panoramic sea views
- * Brand-new apartment
- * Premium upgraded kitchen
- * High-end appliances included
- * Fully tiled bathrooms with shower enclosures
- * Electric blinds
- * Additional upgrades and extras valued at over €10,000
- * Bright and modern open-plan layout

Located in the exclusive gated community of Blossom II, this apartment enjoys a privileged position just minutes from Benalmádena Pueblo and within easy reach of everything you need for everyday living.

Prime Location

- * Walking distance to restaurants, cafés and local shops
- * Close to supermarkets and medical clinics
- * Near international and local schools
- * Excellent access to public transport and bus stops
- * Just minutes from Benalmádena Pueblo
- * Short drive to beaches, golf courses and marinas
- * Approximately 15 minutes from Málaga International Airport

Residents benefit from outstanding communal facilities including:

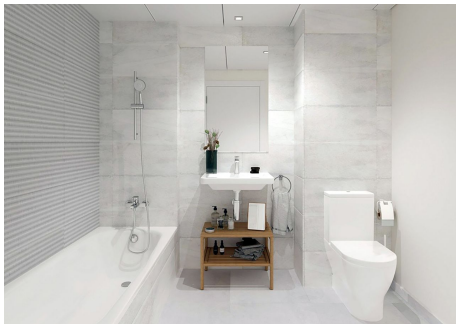
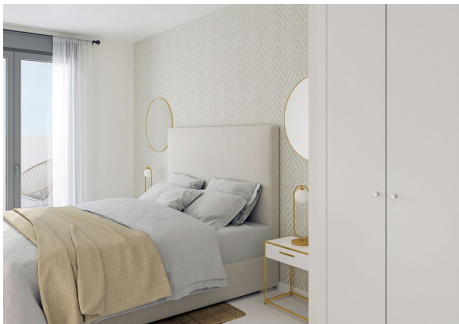
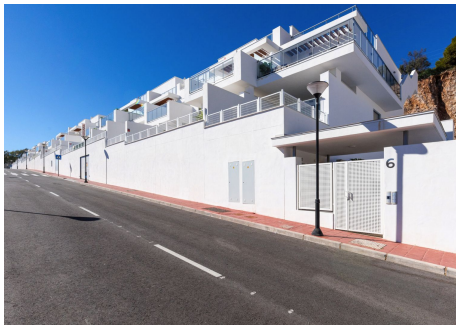
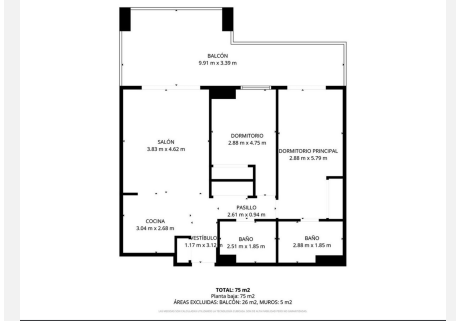
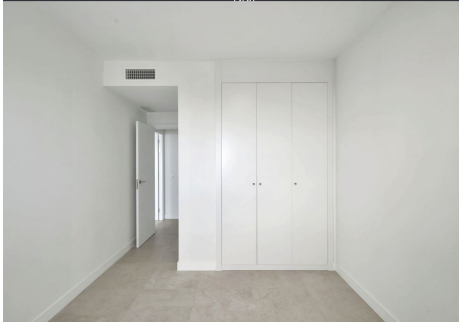
- ? Swimming pool
- ? Fully equipped gymnasium
- ? Elegant gastroteca and social area
- ? Concierge service
- ? Security cameras throughout the complex
- ? Secure gated access

Whether you are looking for a permanent residence, a holiday home, a rental investment, or a lock-up-and-leave property on the Costa del Sol, this exceptional apartment offers the perfect combination of luxury, convenience, and panoramic sea views.

Experience the very best of the Costa del Sol lifestyle in one of Benalmádena's most desirable new developments.

IDILIQ

ESTATES



IDILIQ

ESTATES

