



R5424010

📍 Atalaya

REF# R5424010 2.650.000 €

BEDS

4

BATHS

3

BUILT

168 m²

PLOT

1134 m²

Outstanding and recently renovated detached beachside villa.

We are presenting an independent Villa, 600m from the seashore, nestled in a generous 1134sqm, in a consolidated residential tranquil área, and with every amenity at hand: Supermarkets, open commercial centres, restaurants, pharmacy, schools, 4* Hotels in the surroundings ... The Villa boasts a gifted location as it is placed next to Guadalmina, as well as next to Benahavis with its plethora of quality restaurants and close as well to San Pedro and Puerto Banús, the epitome of entertaining, leisure and paramount luxury shops. Furthermore the premises are surrounded by Golf courses, the main one being the famous Real Club de Golf de Guadalmina. Moreover, the house is a short distance from the hectic Guadalmina Open Commercial Centre with its renowned gastronomic and leisure offer, with nation wide famous restaurants. And just 5 minutes away is the jewel of entertainment, fun, and the most exclusive shopping on the Costa del Sol: the renowned Puerto Banús.

IDILIQ

ESTATES

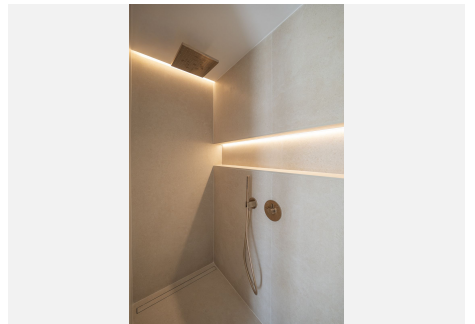
This light bathed dwelling, welcomes us in its gated plot with a paved parking área suitable for several cars, a Grass área at a side of the house and Ceramic Tile at the pool área. Also within the plot, a built utility room for storage and machinery at one corner and a covered chill out room with a Brabura BBQ and Kitchen plus a dining área close to the pool. The entrance to the dwelling, sheltered with a sleek porch, leads us through a hallway to the core of the building, leaving at the right, two bedrooms with access to the garden that share a bathroom. Once at the living room with a proper dining área, we find at our right a half-open kitchen with top Bosch Appliances; on the left, two en suite bathrooms, also with access to the garden and saltwater pool.

A property with Deluxe finishes and appliances: Daikin aerothermal and Air Conditioning; brushed Bronze Hans Grohe bathroom fittings; Saloni Tiling throughout, the mentioned Brabura BBQ, and more ... A house thought, located and equipped for leisure and joy, an example of a holiday home, or also a First Home thanks to its gifted location with all the services at hand. Come and check for yourself the quality finishes, the Scandichic decoration, the light of the premises ... and what's more! It is for sale with all there is currently at the house, all one might need to start living tomorrow.



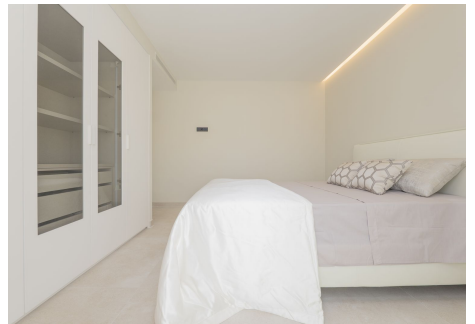
IDILIQ

ESTATES



IDILIQ

ESTATES



IDILIQ

ESTATES

