

IDILIQ

ESTATES



R5422426

📍 Benahavís

REF# R5422426 549.500 €

BEDS

2

BATHS

2

BUILT

108 m²

TERRACE

15 m²

New to the property market we are fortunate to offer an exclusive apartment located in a secure residential community – within close proximity & walking distance to Atalaya private international school, Benahavis. It's also opposite Mercadona Supermarket – superb location

This property stands out for its spacious layout, prime location and high-quality finishes. 24-hour security and the indoor and outdoor facilities

With a built area of 108m² plus a stunning 15m² terrace enclosed with glass curtains this apartment offers a bright and comfortable space to enjoy all year round with its southerly views.

It consists of 2 spacious bedrooms and 2 bathrooms a separate kitchen complete with top end appliances with a spacious living dining area that has direct access to the terrace.

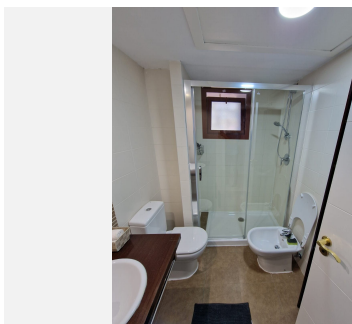
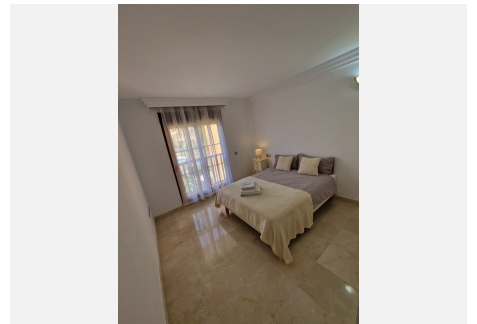
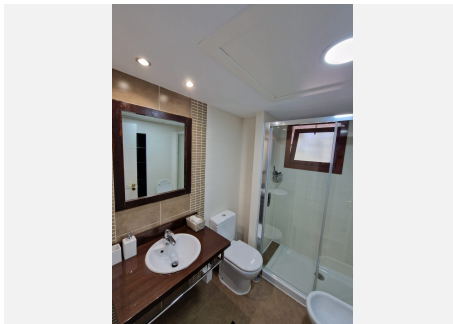
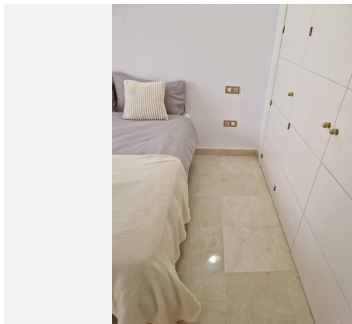
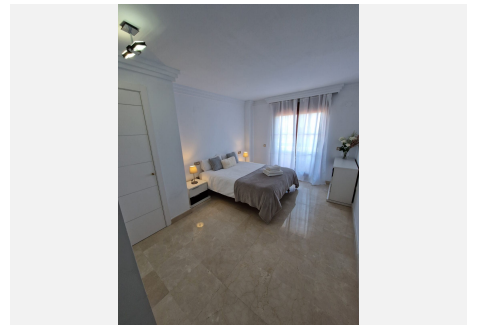
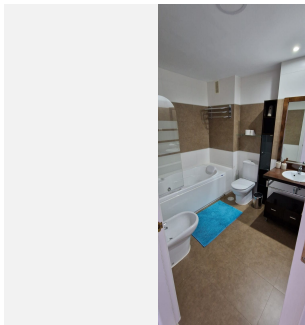
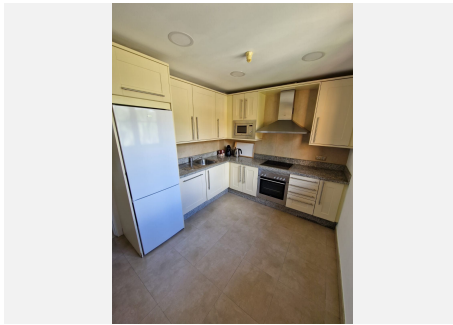
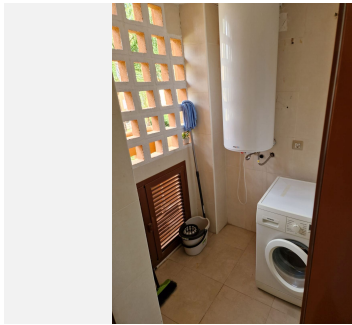
This property is sold fully furnished with quality furniture ready to move in.

IDILIQ

ESTATES

The community features: 4 large swimming pools set amongst the most stunning mature gardens with exotic shrubs, water features and crazy stoned paved pathways; a paddle tennis court; an impressive gymnasium with dressing rooms including saunas and a Jacuzzi; and there is also a spacious heated indoor pool.

The property price includes a garage space and a private storage room underground. An excellent opportunity for both permanent residence and investment



IDILIQ

ESTATES

