

IDILIQ

ESTATES



R5417977

 Guadalmina Baja

REF# R5417977 12.900.000 €

BEDS

5

BATHS

5

BUILT

1251 m²

PLOT

3700 m²

TERRACE

250 m²

AN EXCLUSIVE SEASIDE ESTATE IN CASASOLA

Just 50 metres from the beach, in one of the most prestigious and private residential communities on the Costa del Sol, **Casasola**.

Renowned for its privacy, security and exclusive collection of luxury residences, Casasola offers an unparalleled lifestyle. The community benefits from **24-hour security, CCTV surveillance and regular patrols**, ensuring complete peace of mind, while being only **8 minutes from Puerto Banús** and **13 minutes from both Marbella and Estepona**.

SPACE & PRIVACY

Set within an impressive **40,000 m² estate**, the property is surrounded by lush greenery and completely screened from view by mature hedges, offering total privacy.

The grounds feature:

- * 50 magnificent palm trees and beautifully landscaped gardens
- * Expansive manicured lawns
- * A spectacular **16 x 8 metre saltwater swimming pool** with ambient lighting
- * An elegant Oriental fountain at the centre of the entrance courtyard
- * Automatic irrigation system and exterior landscape lighting throughout the estate
- * A spacious oval driveway providing elegant vehicle access and ample turning space

ARCHITECTURE & DESIGN

Built in 2007 by a renowned architect for a member of a royal household, the villa combines timeless classical elegance with refined **Arabian, Moroccan and African influences**.

Distinctive features include:

- * Ceiling heights of up to **4 metres**
- * A stunning glass dome crowning the grand entrance hall
- * Hand-painted murals inspired by nature
- * Natural marble flooring throughout the ground floor and hardwood floors in the bedrooms
- * Underfloor heating across the entire residence

INTERIOR & LAYOUT

This elegant two-storey residence offers:

- * A magnificent entrance hall
- * Spacious formal dining room
- * **Five luxurious en-suite bedrooms**, each with its own bathroom and shower
- * Five full bathrooms plus a guest powder room
- * Children's playroom or study
- * Separate staff apartment with independent entrance

The upper floor features **five panoramic terraces**, including a private terrace adjoining the master suite with beautiful sea views.

LEISURE & WELLNESS

- * Multiple terraces for outdoor dining, lounging and sunbathing
- * Fully equipped summer kitchen and outdoor dining area
- * Covered BBQ and entertainment area
- * Professional gym equipped with **Technogym** equipment
- * Private spa featuring a Canadian cedar sauna
- * Billiard room with an impressive 11-foot table

TECHNOLOGY & ENGINEERING

- * 20 kW electrical capacity
- * High-speed **1 Gbps fibre internet**
- * **Securitas Direct** security system
- * Diesel boiler with backup heating system
- * Solar panels for hot water production
- * Water purification system and reserve water tank

ADDITIONAL FEATURES

- * Fully equipped professional chef's kitchen
- * Two spacious garages
- * Wine refrigeration system with capacity for **300 bottles**
- * Laundry room equipped with **Miele** appliances
- * Separate entrance for staff and deliveries
- * Utility rooms and extensive storage facilities

FURNITURE & ART COLLECTION

The villa is offered together with an exceptional collection of antique furniture and fine art, including rare pieces from **Arab, Japanese and Asian cultures**, carefully curated as part of a distinguished private collection.

A UNIQUE LIFESTYLE

Villa Palmeral is far more than a home—it is a private, fully self-contained seaside estate where luxury and tranquillity coexist in perfect harmony.

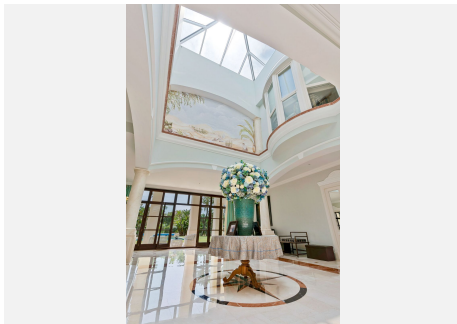
It offers:

- * Absolute privacy
- * Exceptional security
- * ?Grand ?scale ?and ?exclusivity
- * ?Distinctive architectural ?elegance

An extraordinary opportunity ?for those ?seeking not ?simply ?a property, but ?a statement ?of ?prestige and ?an ?unrivalled ?lifestyle ?on ?the ?Mediterranean ?coast.

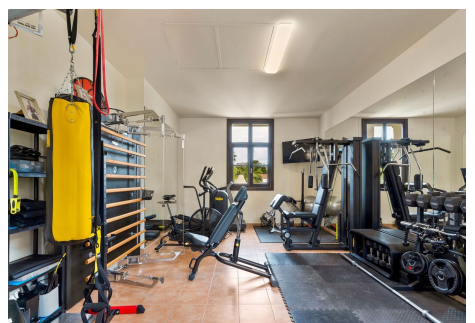
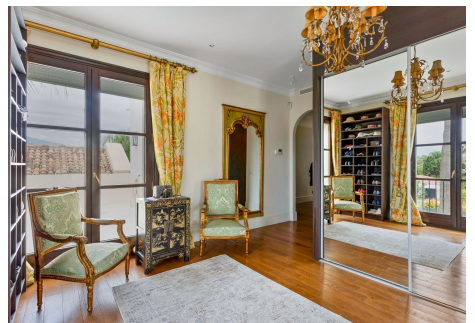
IDILIQ

ESTATES



IDILIQ

ESTATES



IDILIQ

ESTATES

