



R5414836

📍 El Pinillo

REF# R5414836 449.000 €

BEDS

3

BATHS

2

BUILT

106 m<sup>2</sup>

TERRACE

55 m<sup>2</sup>

## SEMI-DETACHED HOME IN EL PINILLO!!

The home you've been looking for to enjoy outdoor space, tranquility, and an unbeatable location.

Located in one of the most sought-after areas of Torremolinos, this fantastic townhouse offers 106 m<sup>2</sup> of living space and no less than 55 m<sup>2</sup> of private patios—perfect for those who value the comfort of a family home with ample outdoor areas.

As soon as you enter, you're greeted by a pleasant 20 m<sup>2</sup> front patio that offers privacy and an ideal space to enjoy the good weather all year round. On the ground floor, you'll find a separate kitchen, a full bathroom with a shower, and a spacious living room with a fireplace that serves as the heart of the home.

From the living room, you access the large 35 m<sup>2</sup> back patio with a porch—a true luxury for gatherings with friends, family meals, or simply relaxing outdoors. It also offers direct access to the common areas and the pool.

# IDILIQ

ESTATES

The upper floor features three spacious bedrooms with built-in closets, highlighted by the master bedroom with a private balcony. A full bathroom with a bathtub completes this floor.

Highlights of this home:

55 m<sup>2</sup> of private outdoor space.

3 bedrooms and 2 full bathrooms.

Community pool.

Fireplace.

Balcony.

South-north orientation.

Quiet, family-friendly neighborhood.

Exceptional location

Located in El Pinillo, one of the most sought-after areas in Torremolinos due to its excellent transportation links and quality of life:

? Commuter train station 5 minutes away

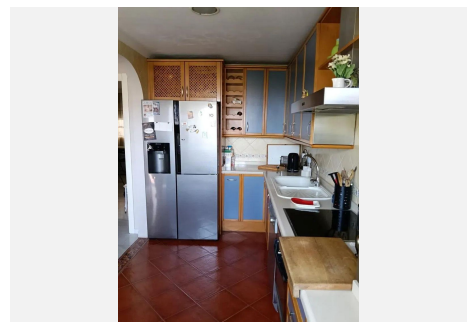
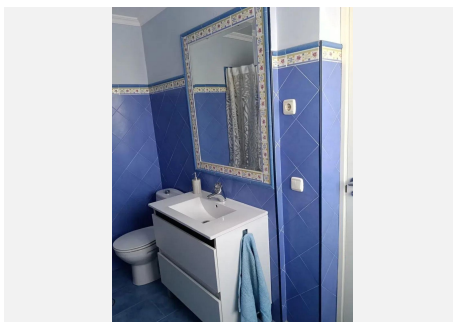
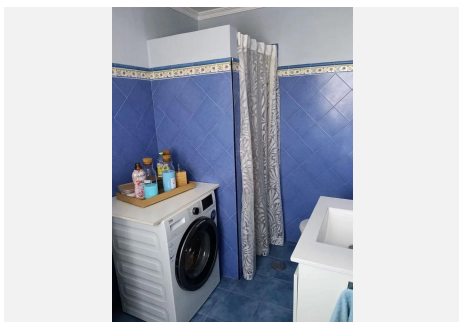
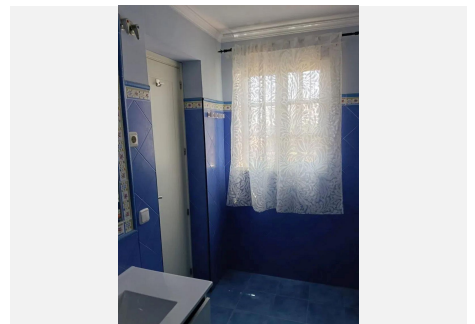
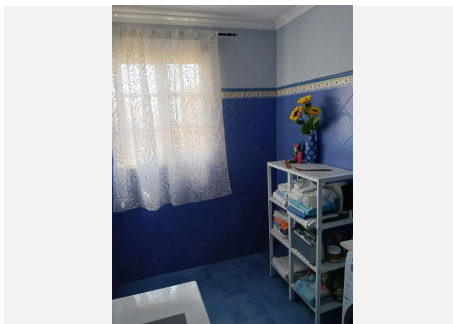
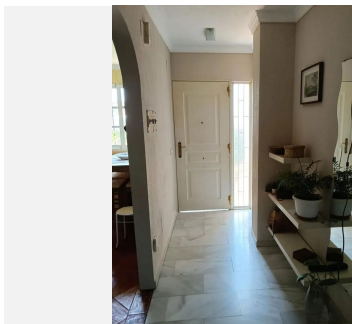
? Direct access to the A-7.

? Supermarkets, elementary and high schools, and a health center all nearby.

? La Carihuela just a few minutes away.

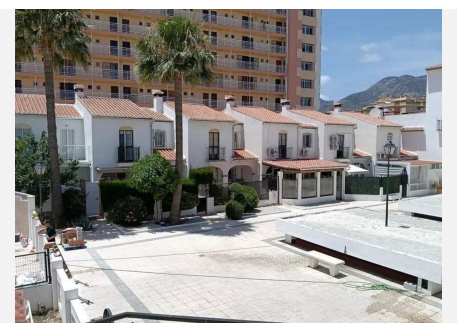
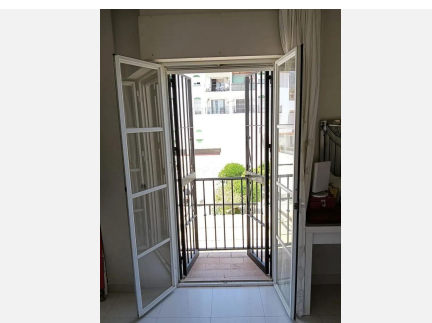
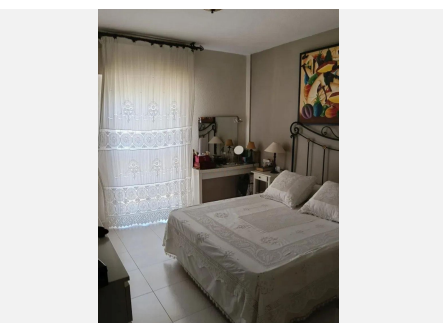
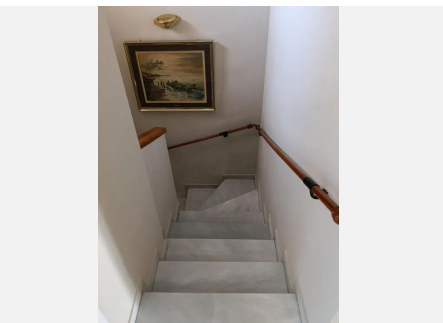
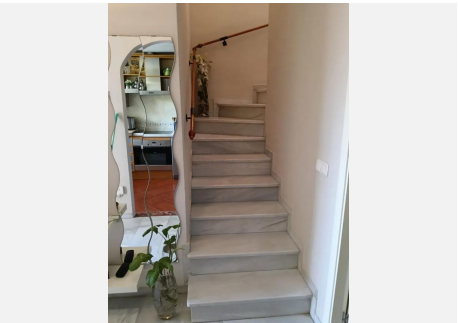
? Puerto Marina and all its leisure and dining options right around the corner.

An ideal opportunity for those looking for a spacious home with large outdoor areas and all amenities within easy reach.



# IDILIQ

ESTATES



# IDILIQ

ESTATES

