

GROUND FLOOR APARTMENT 2 BEDROOMS 2 BATHROOMS IN LA MAIRENA

 La Mairena

REF# R5412448 460.000 €

BEDS	BATHS	BUILT	PLOT	TERRACE
2	2	171 m ²	41 m ²	30 m ²

Stunning South-Facing Garden Apartment in La Mairena.

Nestled within the picturesque landscape of La Mairena, this exquisite south-facing garden apartment offers a serene retreat surrounded by natural beauty. With its optimal orientation, you will indulge in abundant sunlight and breathtaking views throughout the day.

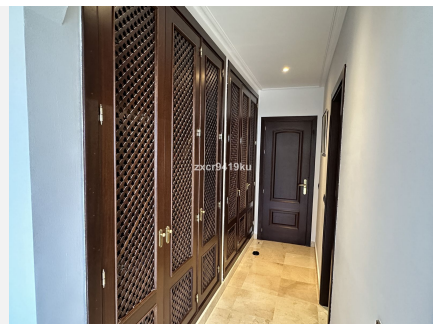
Residents enjoy complimentary access to the superb El Soto leisure facilities, 9-Hole golf course, gym, spa, sauna, jacuzzi, paddle and tennis court and the wonderful restaurant on site which is a great meeting place for food and drinks.

Underground secure parking and 12sqm storage room,

This is one of the few south facing properties in the urbanisation, viewing is highly recommended.

IDILIQ

ESTATES



IDILIQ

ESTATES

