



## SEMI-DETACHED HOUSE 5 BEDROOMS 3 BATHROOMS IN ATALAYA

📍 Atalaya

REF# R5412172 495.000 €

BEDS	BATHS	BUILT	PLOT	TERRACE
5	3	160 m <sup>2</sup>	219 m <sup>2</sup>	30 m <sup>2</sup>

### FANTASTIC TOWNHOUSE IN RESIDENCIAL DIANA

Discover this charming Mediterranean-style townhouse, located in the exclusive Residencial Diana urbanization, surrounded by beautiful gardens, it will captivate you from the first moment. Situated within a private residential complex, with 160 square meters of living space, this home offers spacious rooms filled with natural light, creating a cozy and warm atmosphere, fully furnished, ready to move into.

We access the house through a porch, surrounded by beautiful plants, leading to a spacious hall, from which a separate kitchen is distributed, ideal for cooking enthusiasts, with a laundry area and pantry, and direct access to the garden, a cozy and spacious living-dining room with a fireplace perfect for winter nights and direct access to a beautiful garden with fruit trees; lemon, avocado, bay leaf,... making it an ideal place to relax on the Costa del Sol.

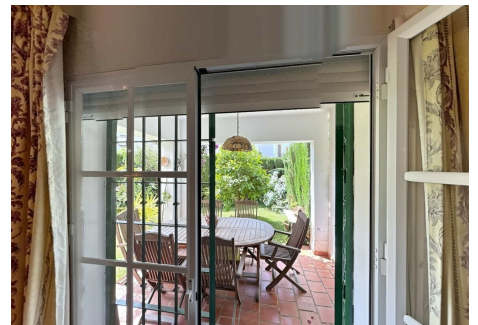
# IDILIQ

ESTATES

This home not only stands out for its functional layout but also for its privileged and tranquil surroundings. The staircase leads to the second floor where a large hall distributes a master bedroom with an en-suite bathroom and a solarium terrace, perfect for sunbathing, 1 office, 1 double bedroom with a balcony, 1 single bedroom with a balcony, and an exterior bathroom, in addition, all bedrooms have fitted wardrobes. Furthermore, the second floor is set up as a relaxation and sports area, offering a versatile space for well-being, with a south-facing solarium terrace, ideal for enjoying the sunrise and sunset all year round. It also has the possibility of building a basement floor.

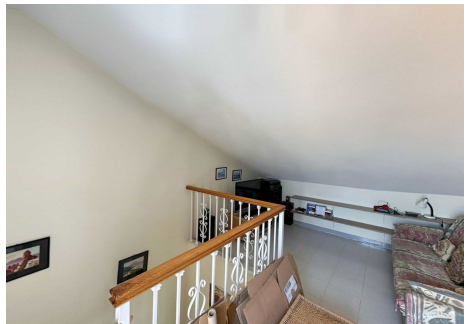
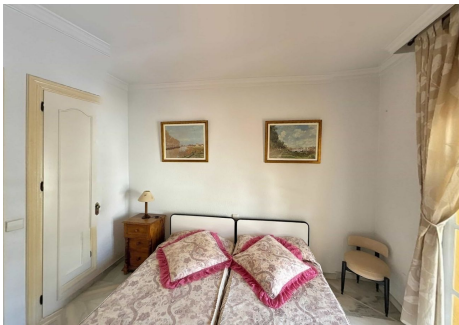
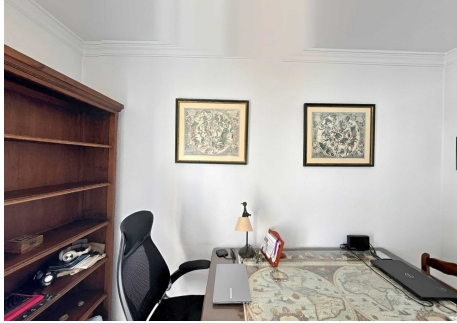
The exterior is not to be outdone: beautiful gardens with a communal pool, barbecue area, and paddle tennis court invite you to enjoy the good weather and the tranquility of a very quiet and exclusive residential urbanization, ideal for sharing unforgettable moments with friends and family. The property also has pre-installation for air conditioning and excellent construction quality. The fantastic orientation of the house and the great natural light in all its rooms are noteworthy.

Strategically located near the N340 exit, surrounded by all necessary services such as supermarkets, shops, banks, clubs,... less than 2 minutes away and only 5 km from Puerto Banus, 9 km from Estepona, and 13 km from Marbella, a bus stop less than 4 minutes from the house, and furthermore, a walkway gives us direct access to the beach in less than 15 minutes on foot, this house offers the perfect combination of privacy and comfort. With a south-east orientation, you can enjoy the sun all day long. It also includes three parking spaces. Don't miss the opportunity to live in a privileged environment. Contact our team of licensed professionals for more information!



# IDILIQ

ESTATES



# IDILIQ

ESTATES

