



PENTHOUSE 2 BEDROOMS 2 BATHROOMS IN BENAHAVÍS

 Benahavís

REF# R5411941 510.000 €

BEDS

2

BATHS

2

BUILT

133 m²

TERRACE

20 m²

If you're looking for a low-maintenance, fully refurbished home in the sun, this penthouse stands out. Set on the top floor of a small community, in the urbanization of Puerto del Almendro, it has its own private entrance, offers three private terraces, open views, and a peaceful setting close to amenities.

The refurbishment covers absolutely everything: new electrics, plumbing, AC, flooring, ceilings, kitchen, bathrooms, wardrobes, lighting, terrace irrigation, new water tanks, water softener, and Kommerling UPVC double-glazed windows and patio doors — ideal for keeping the home cool in summer and warm in winter.

The living room opens onto a south-facing terrace with views across the hills to the Mediterranean. Both bedrooms have en-suite bathrooms and private terraces. A separate laundry room adds practical convenience.

A medium-sized storage room is also included.

IDILIQ

ESTATES

What truly sets this property apart is the community's pool and gardens. Surrounded by mature greenery, tall palms, and beautifully kept lawns, the pool area is an oasis of calm and serenity — a quiet, private space to unwind, read, sunbathe, or enjoy a peaceful swim. It's rare to find such a tranquil setting so close to everything.

The community is quiet and well established, with emphasis on safety and security. It's known for its kind and friendly neighbors, creating a relaxed and welcoming atmosphere. Shops and restaurants at Monte Halcones are close by, and San Pedro is only a short drive. There is also a tennis court available on the site.

Ideal for buyers wanting comfort, quality, and year-round sunshine

Penthouse, Benahavís, Costa del Sol.

2 Bedrooms, 2 Bathrooms, Built 133 m², Terrace 20 m².

Setting : Mountain Pueblo, Close To Schools, Urbanisation.

Orientation : South.

Condition : Excellent.

Pool : Communal, Children`s Pool.

Climate Control : Air Conditioning, Hot A/C, Cold A/C, Fireplace.

Views : Sea, Mountain, Forest.

Features : Covered Terrace, Lift, Fitted Wardrobes, Near Transport, Private Terrace, WiFi, Tennis Court, Storage Room, Utility Room, Ensuite Bathroom, Fiber Optic.

Furniture : Part Furnished.

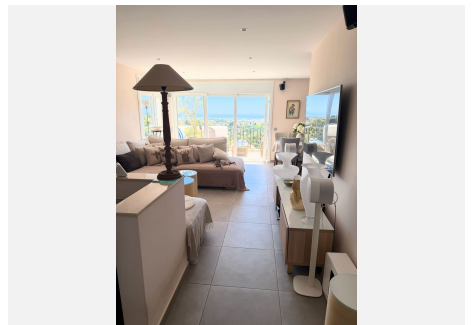
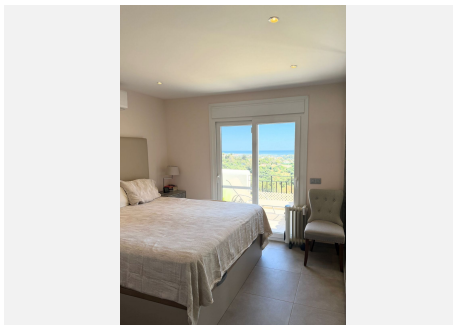
Kitchen : Fully Fitted.

Garden : Communal.

Security : Gated Complex.

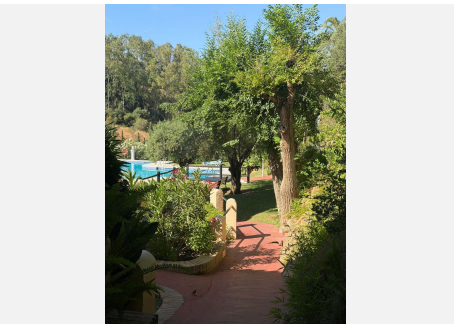
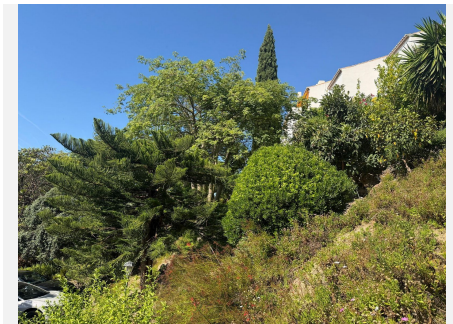
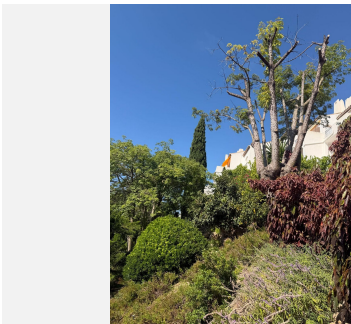
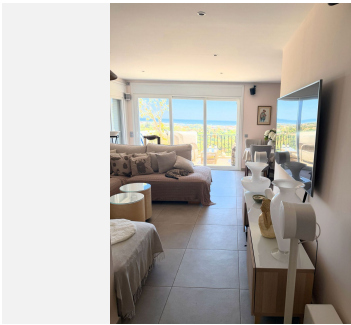
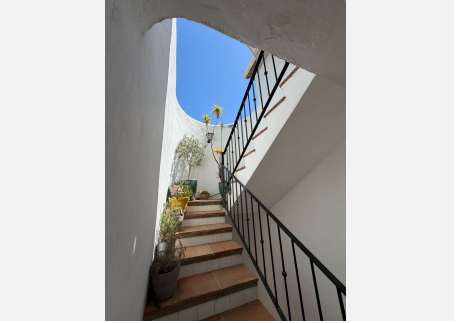
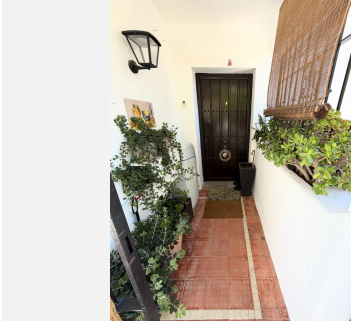
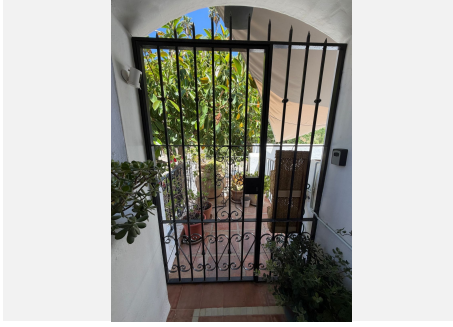
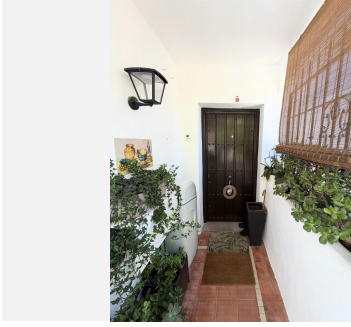
Parking : Underground, Garage, Covered, Private.

Category : Resale.



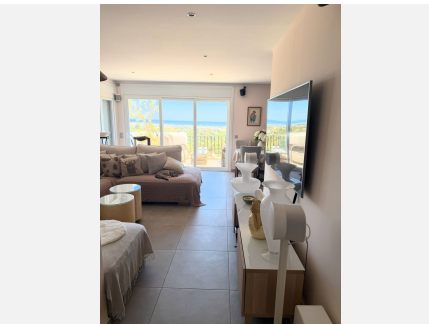
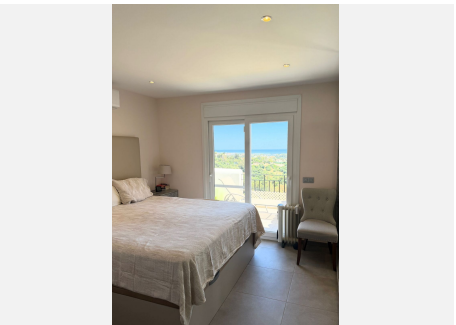
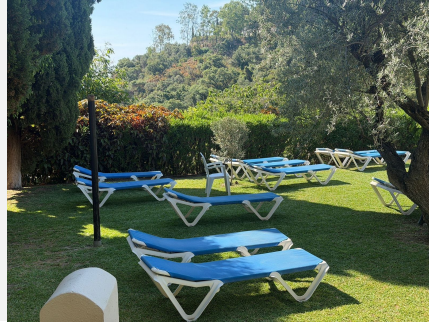
IDILIQ

ESTATES



IDILIQ

ESTATES



IDILIQ

ESTATES

