



R5408431

 Selwo

REF# R5408431 995.000 €

BEDS

3

BATHS

2

BUILT

138 m²

TERRACE

34 m²

Stunning Corner Apartment with Panoramic Sea & Mountain Views in Libella Selwo

Experience contemporary luxury living in this exceptional corner apartment located in the sought-after Libella Selwo development on the Costa del Sol. Boasting a privileged southwest orientation, this elegant residence offers breathtaking panoramic views of the Mediterranean Sea, surrounding mountains, and picturesque coastline.

The property features three spacious bedrooms and two stylish bathrooms, including a luxurious en-suite. With 138 m² of beautifully designed interior space and a generous 34 m² covered terrace, the apartment seamlessly blends indoor and outdoor living, creating the perfect setting for relaxation and entertaining. Finished to an excellent standard, this modern home is offered fully furnished and features a fully fitted contemporary kitchen equipped with premium kitchen appliances, air conditioning, underfloor heating, double glazing, fiber-optic internet, and ample storage space. Large windows fill the living areas with natural light while framing the spectacular views.

Residents benefit from an outstanding range of resort-style amenities, including landscaped communal

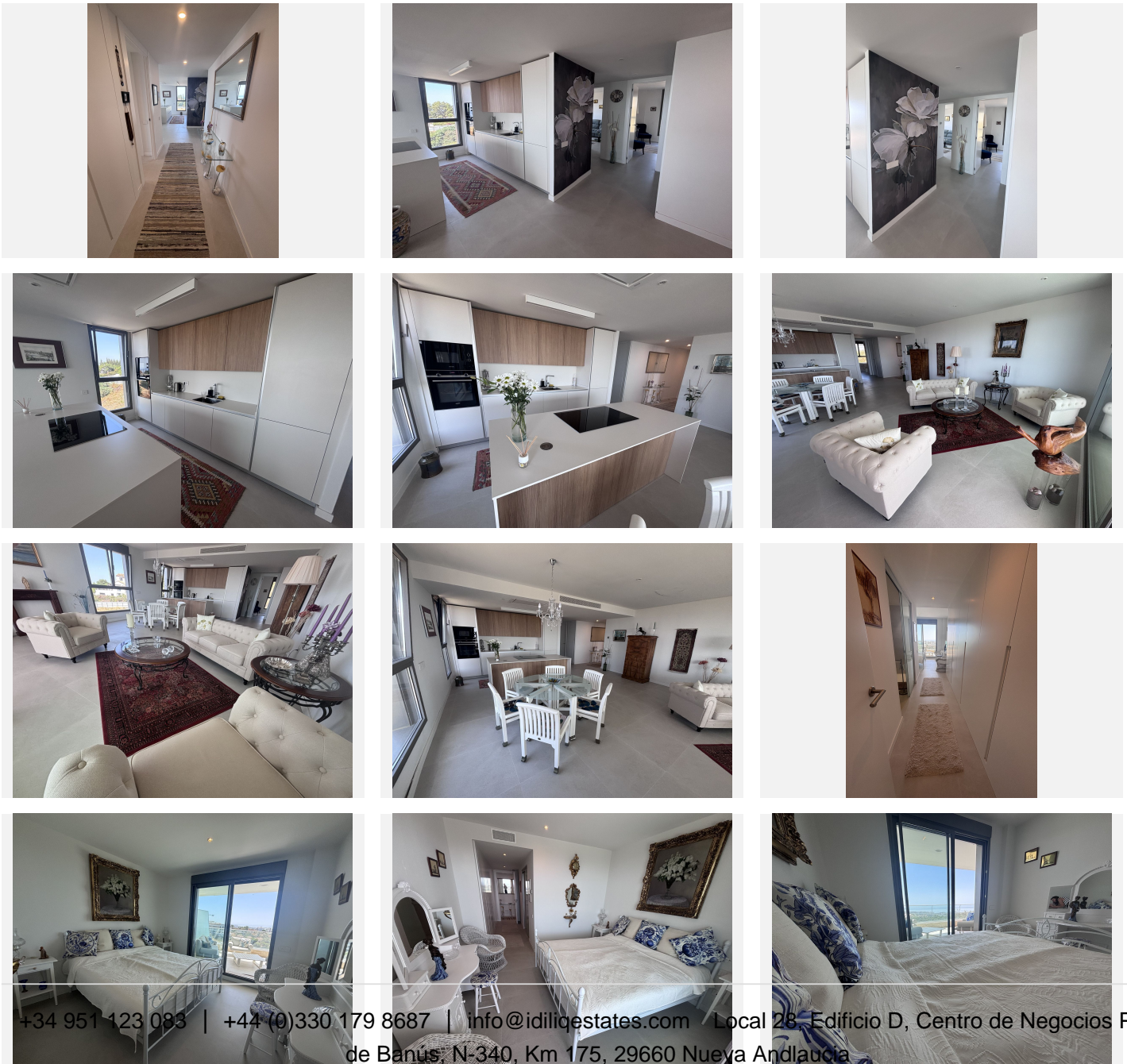
IDILIQ

ESTATES

gardens, a swimming pool, gymnasium, sauna, underground parking, and 24-hour gated security. The development is also fully accessible for people with reduced mobility. 10 minutes from Estepona center, international schools, 3 minutes from the sandy beaches!

The furnitures will be changed for modern style in the middle of August and will be included in the sales price.

Whether as a permanent residence, luxury holiday home, or investment opportunity, this exceptional apartment combines comfort, security, and modern design in one of the Costa del Sol's most desirable locations.



IDILIQ

ESTATES

