



TOWNHOUSE 2 BEDROOMS 2 BATHROOMS IN MANILVA

 Manilva

REF# R5408344 **399.000 €**

BEDS

2

BATHS

2

BUILT

99 m²

TERRACE

12 m²

Superb corner house located in the BLUE VIEW complex

Well new, never lived in. Giving you the possibility to buy new with 7% and not 10% VAT.

Open view of the sea. Gibraltar and the mountain.

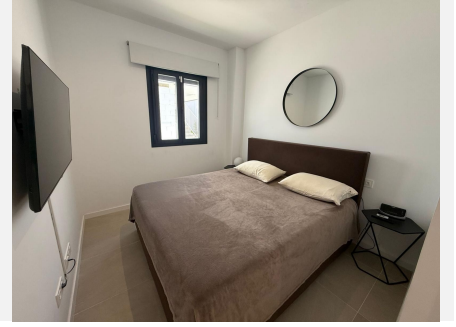
Ease of access from the garage also leading directly to the front door of your home.

On foot from the beach and beach bars. 5 minutes from Torreguadiaro and 7 min from the port of Sotogrande.

Investment property or to enjoy it with your family, this property only needs to be bought.

IDILIQ

ESTATES



IDILIQ

ESTATES

