



R5408302

📍 Marbella

REF# R5408302 7.975.000 €

BEDS

6

BATHS

8

BUILT

1462 m²

PLOT

49831 m²

Exceptional Contemporary Estate in La Mairena, Marbella, with Panoramic Sea and Mountain Views

Nestled in the beautiful countryside of La Mairena, Marbella, on the prestigious Costa del Sol, this extraordinary contemporary estate offers a unique combination of privacy, luxury, and scale. Set on an impressive 49,831 m² plot with 1,462 m² of built area, the property is designed for those seeking an exclusive lifestyle surrounded by nature while remaining just a short drive from Marbella, renowned golf courses, and the finest amenities of the Costa del Sol.

South-facing and presented in excellent condition, the villa enjoys spectacular panoramic views of the Mediterranean Sea and the surrounding mountains. Its spacious interiors flow seamlessly onto covered and private terraces, creating the perfect setting to embrace the Mediterranean lifestyle throughout the year.

The residence features six generously sized double bedroom suites, each with its own private lounge area and en-suite bathroom, as well as two guest toilets, offering exceptional comfort and privacy. Every space has been thoughtfully designed to combine functionality and sophistication, with fitted wardrobes and refined

+34 951 123 083 | +44 (0)330 179 8687 | info@idiliqestates.com Local 28, Edificio D, Centro de Negocios Puerta de Banús, N-340, Km 175, 29660 Nueva Andlucia

IDILIQ

ESTATES

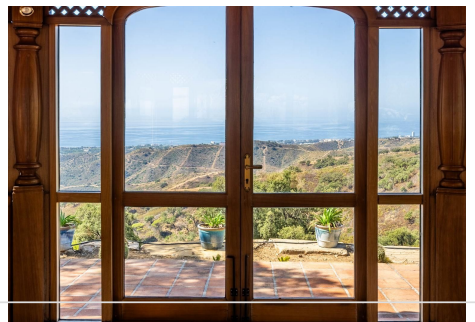
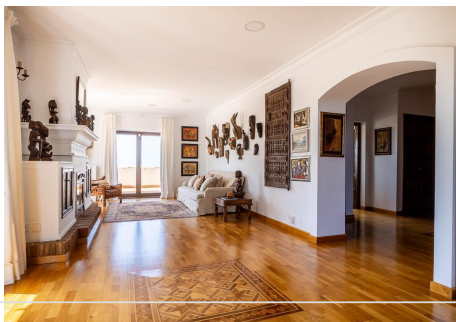
finishes enhancing the property's exclusive character.

The fully equipped kitchen meets the highest standards, while the expansive living and dining areas provide bright and welcoming spaces for both family living and elegant entertaining.

Among its outstanding amenities is a spectacular private swimming pool, both indoor and heated, allowing for year-round enjoyment and relaxation. The extensive private gardens surrounding the villa create an exceptional sense of peace and seclusion, transforming this estate into a true luxury retreat.

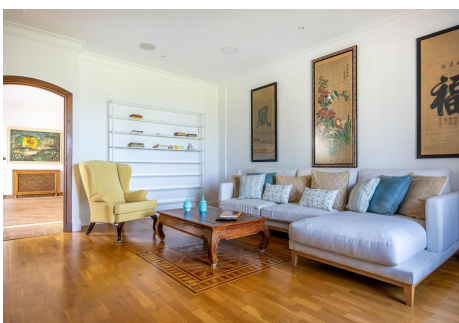
Additional features include air conditioning, central heating, a private garage, a storage room, and a gated entrance that ensures security and exclusivity.

A truly remarkable property that combines contemporary design, generous living spaces, and a privileged natural setting. Located in the sought-after area of La Mairena, Marbella, this exceptional estate represents a rare opportunity to acquire a luxury residence in one of the Costa del Sol's most exclusive countryside settings. Ideal as a distinguished family home, private retreat, or high-end investment, it offers the perfect balance of tranquillity, privacy, and accessibility.



IDILIQ

ESTATES



IDILIQ

ESTATES

