



R5406538

📍 Estepona

REF# R5406538 770.000 €

BEDS

3

BATHS

2

BUILT

118 m²

TERRACE

15 m²

Apartment for Sale – Isidora Living, Estepona

Brand-new corner apartment in a newly completed residential development in Estepona. The property is unfurnished, offering a blank canvas to design and furnish it entirely according to your own taste and lifestyle.

Property Features

- Corner unit with abundant natural light
- 3 spacious bedrooms
- 2 modern bathrooms
- Large entrance hall
- Unfurnished – ready for personalized interior design
- Fully equipped kitchen with all essential appliances (white goods included)

Community Amenities

- Two swimming pools (including a children's pool)
- Main pool adapted for people with reduced mobility
- Barbecue area for residents
- Children's playground
- Co-working and lounge space
- Fully accessible, disability-friendly infrastructure throughout the development
- Underground parking space included

Prime Location – Isidora Living, Estepona

Located in the modern residential development Isidora Living, right in Estepona, one of the fastest-growing and most desirable coastal towns on the Costa del Sol. The property is ideally positioned within walking distance to everything you need.

- 5 minutes' walk to the beach
- 10 minutes' walk to Estepona Old Town
- Situated practically in the town center with all services nearby
- Restaurants, cafés, and shops just around the corner
- Close to schools, sports facilities, and leisure activities

Lifestyle & Surroundings

Estepona is known for its long sandy beaches, beautifully maintained promenade (Paseo Marítimo), and vibrant yet relaxed lifestyle. Residents enjoy beach clubs (chiringuitos), seaside restaurants, boutiques, and all essential services within walking distance. The area combines authentic Andalusian charm with modern infrastructure, making it ideal for both permanent living and investment.

A perfect opportunity to acquire a new-build property in one of Estepona's most attractive developments, offering comfort, accessibility, and an exceptional coastal lifestyle.

Total usable area including terrace: 133,88 m²

Total usable interior area (excluding terrace): 118,09 m²

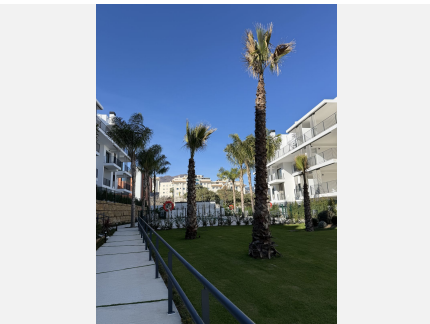
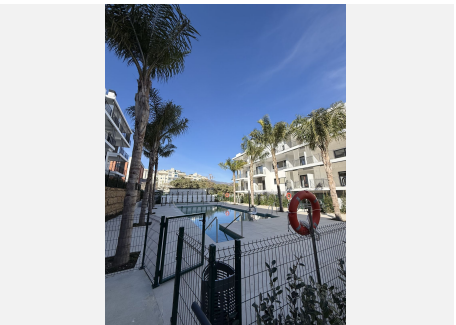
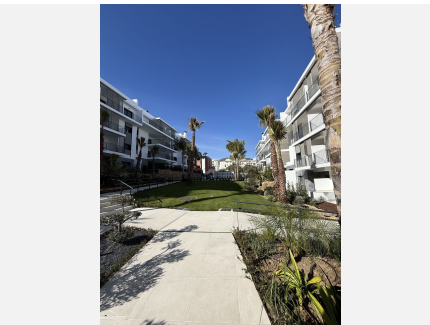
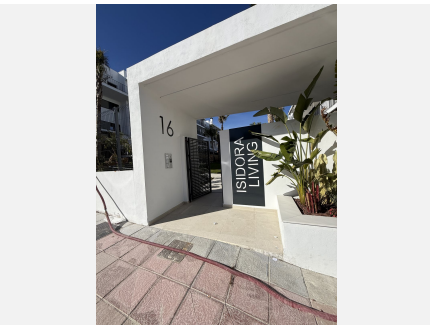
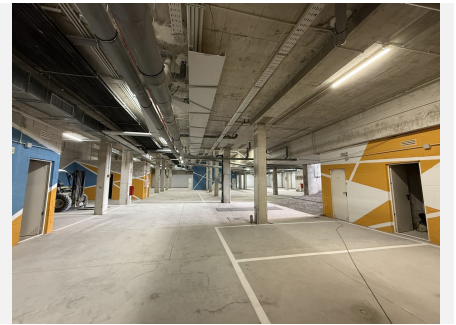
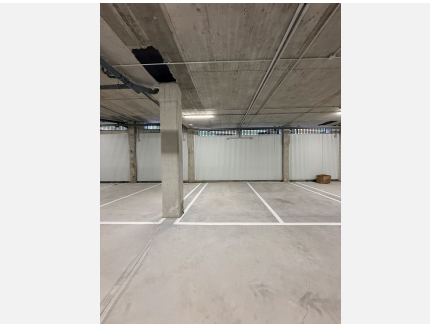
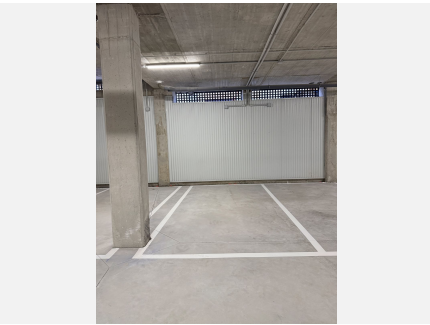
IDILIQ

ESTATES



IDILIQ

ESTATES



IDILIQ

ESTATES

