



R5402131

📍 El Faro

REF# R5402131 795.000 €

BEDS

3

BATHS

2

BUILT

114 m<sup>2</sup>

TERRACE

90 m<sup>2</sup>

## EXCLUSIVE 3-BEDROOM PENTHOUSE IN EL FARO – MIJAS COSTA

Between the Mediterranean Sea and the tranquility of the Costa del Sol, we present this spectacular 3-bedroom penthouse in the exclusive residential complex Vita Marina

With a prime South-West orientation and an impressive 90m<sup>2</sup> private terrace, this property has been masterfully designed to maximize natural light and offer the ultimate outdoor lifestyle, allowing you to enjoy breathtaking Mediterranean sunrises and unforgettable golden sunsets.

Key Features: 3 spacious and bright bedrooms and 2 modern bathrooms. Spectacular 90m<sup>2</sup> terrace, ideal for a premium chill-out area, outdoor dining, and private sunbathing. South-West orientation, ensuring sun exposure all day long. Living-dining room with seamless direct access to the massive terrace. Fully equipped contemporary kitchen.

Parking space and storage room included

The Resort & Amenities: The residential complex offers comprehensive communal areas designed for well-being and leisure: Communal swimming pool surrounded by landscaped gardens. Fully equipped fitness

# IDILIQ

ESTATES

center / gym. Social Gourmet lounge for events. Tranquil and exclusive gated atmosphere. Location & Lifestyle: Situated between La Cala de Mijas and Fuengirola, the complex is just a 2-minute walk from Playamarina beach. Close to prestigious golf courses such as Chaparral Golf Club. Quick and easy access to the A-7 and AP-7 motorways. Minutes away from supermarkets, restaurants, shopping centers, and all amenities. An ideal property as a primary residence, second home, or high-yield investment on the Costa del Sol.

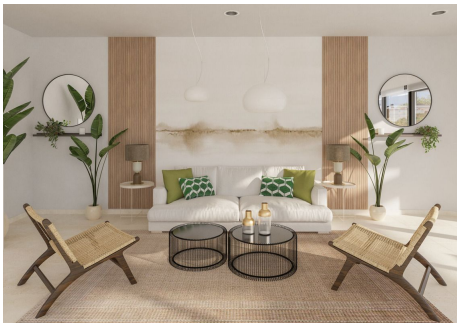
Contemporary design, vast outdoor areas, excellent finishes, and a prime location near the beach make this penthouse a unique opportunity in Mijas Costa.

Please note that some images are computer-generated infographics, faithfully reflecting the premium quality and finishes projected for this development.



# IDILIQ

ESTATES



# IDILIQ

ESTATES

