



R5401990

📍 Marbella

REF# R5401990 2.750.000 €

BEDS

3

BATHS

3

BUILT

207 m<sup>2</sup>

TERRACE

180 m<sup>2</sup>

Linda 2E, Elegant Duplex Penthouse with breathtaking views in La Cerquilla – Nueva Andalucia.

Discover Linda 2E, a stunning duplex penthouse beautifully renovated and located in the sought-after gated community of Palacete Los Belvederes in the heart of La Cerquilla, Nueva Andalucia.

Just minutes from Marbella centre, Puerto Banús, top golf courses, international schools and the beach, this home offers the perfect balance between privacy and convenience. This stunning property spans over two floors and features three spacious bedrooms, three bathrooms, two en-suite, with underfloor heating ensuring maximum comfort throughout.

The bright open-plan living area enjoys plenty of natural light and has been thoughtfully designed with refined finishes, including light wood carpentry that adds warmth and sophistication. The modern kitchen is fully equipped with top-of-the-line Miele appliances perfect for both every day living and entertaining. Step out onto the generous private terrace to enjoy sweeping views of both the Mediterranean and the magnificent La Concha mountain. A separate laundry room with storage cabinets gives you extra comfort and convenience.

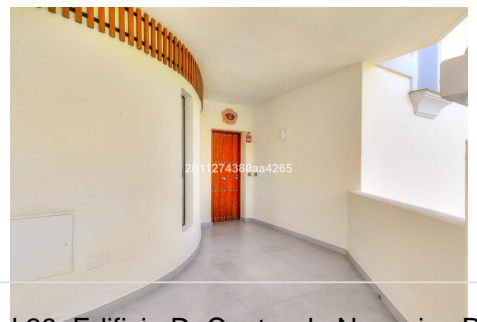
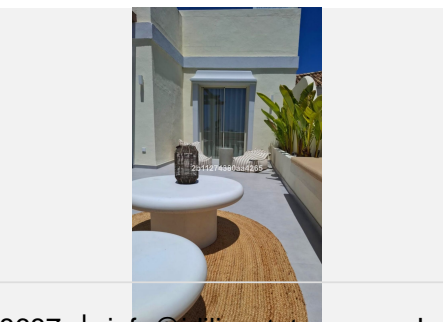
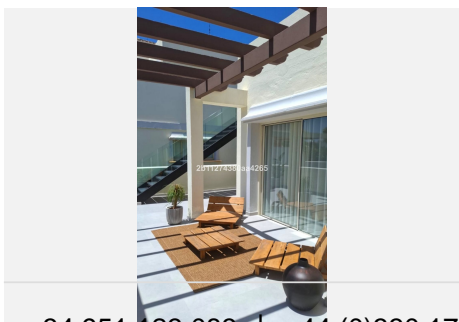
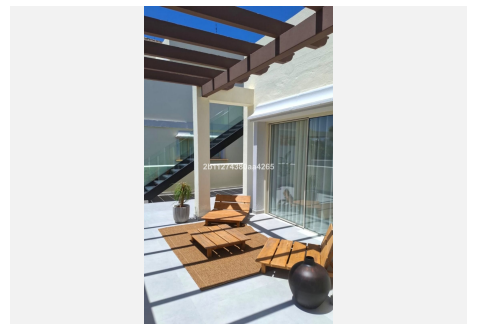
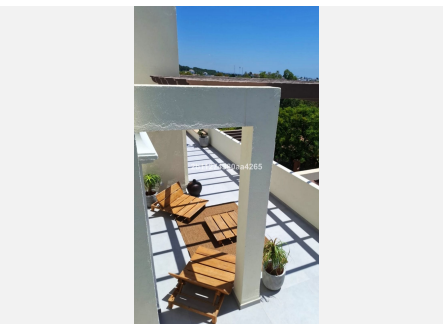
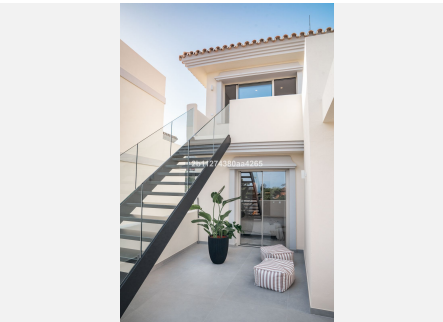
Linda 2E is a luxury residence that offers the feeling of living in a villa thanks to its generous spaces, large  
 +34 951 123 083 | +44 (0)330 179 8687 | info@idiliqestates.com Local 28, Edificio D, Centro de Negocios Puerta  
 de Banús, N-340, Km 175, 29660 Nueva Andlaucia

# IDILIQ

ESTATES

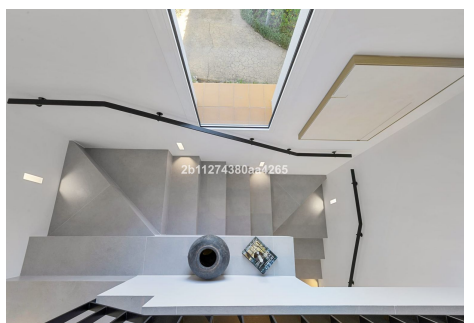
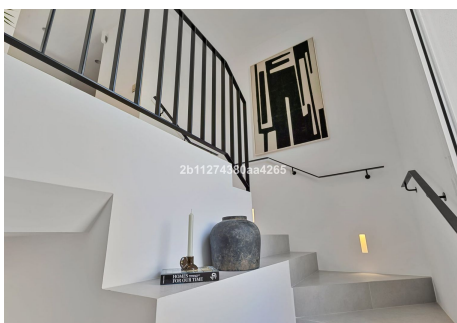
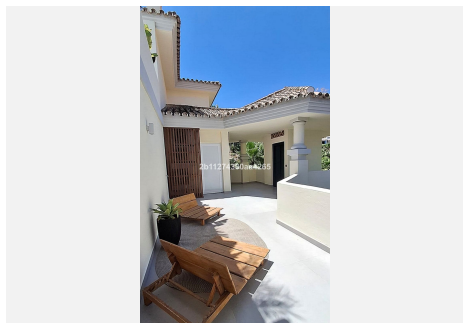
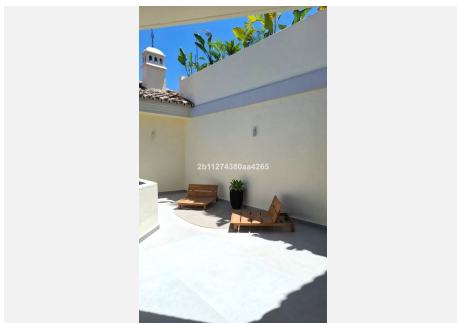
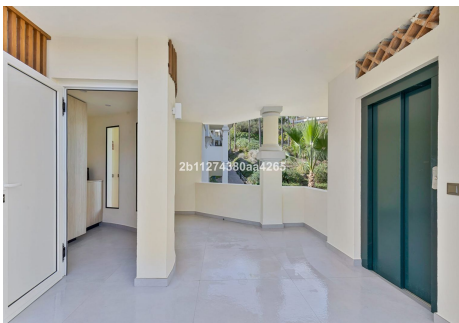
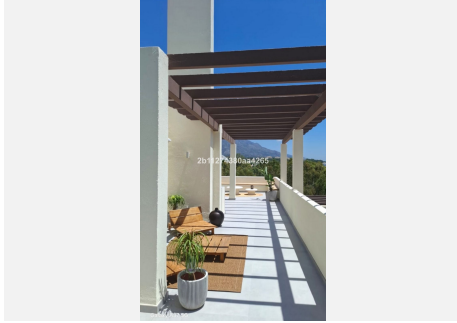
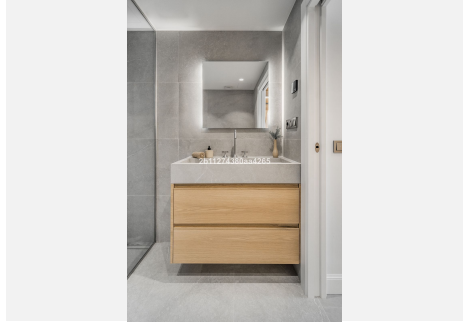
terraces with multiple chill-out areas, a private plunge pool and prime location in a small building of only five units, ensuring exceptional privacy.

Set in a secure gated community with concierge service and 24-hours security with cameras, this penthouse also has the benefit of beautifully manicured gardens, a swimming pool a gym and sauna. Additional features include two underground parking spaces plus a golf buggy space and a large storage room for your comfort. Facing south-west, this duplex penthouse is bathed in natural light all day long. A truly exceptional property and a rare opportunity to own a refined home in one of Marbella's most exclusive enclaves.



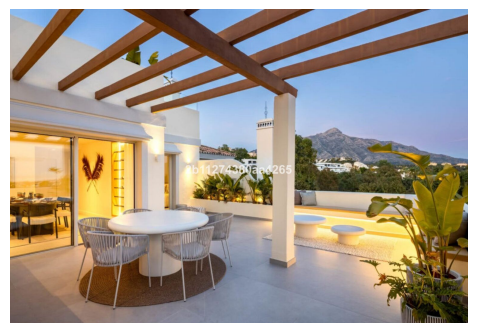
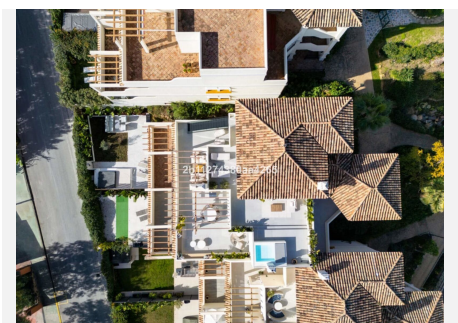
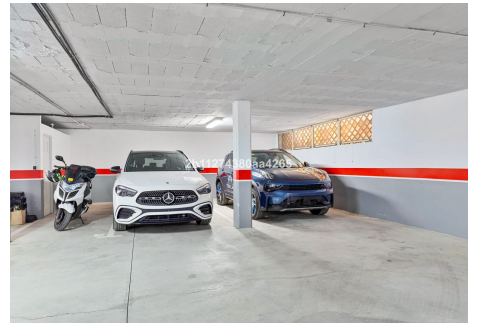
# IDILIQ

ESTATES



# IDILIQ

ESTATES



# IDILIQ

ESTATES

