



MIDDLE FLOOR APARTMENT 2 BEDROOMS 2 BATHROOMS IN NUEVA ANDALUCÍA

 Nueva Andalucía

REF# R5401822 599.000 €

BEDS

2

BATHS

2

BUILT

82 m²

TERRACE

21 m²

Welcome to this exclusive fully renovated two-bedroom apartment, offering 103 m² of elegant living space, located within the prestigious Pinos de Aloha urbanisation—one of the most sought-after and exclusive residential communities in Aloha, Nueva Andalucía.

This exceptional property showcases a modern and sophisticated design, where every detail has been carefully considered. Recently renovated to the highest standards using premium materials, the apartment offers a harmonious blend of contemporary elegance and comfort. Bright open-plan interiors, refined finishes, and carefully curated décor create a truly inviting and luxurious atmosphere.

The apartment enjoys pleasant views over the swimming pool and beautifully maintained communal gardens, offering a peaceful and private setting. The gated community also provides secure private parking for residents.

The location is truly outstanding, particularly for golf enthusiasts. Positioned just minutes from the renowned

+34 951 123 083 | +44 (0)330 179 8687 | info@idiliqestates.com Local 28, Edificio D, Centro de Negocios Puerta de Banús, N-340, Km 175, 29660 Nueva Andalucía

IDILIQ

ESTATES

Aloha Golf Club and surrounded by some of Marbella's most prestigious golf courses, including Las Brisas Golf and Los Naranjos Golf, this property is a dream home for those who want to embrace the Golf Valley lifestyle. Few locations offer such immediate access to world-class golfing in such an exclusive residential setting.

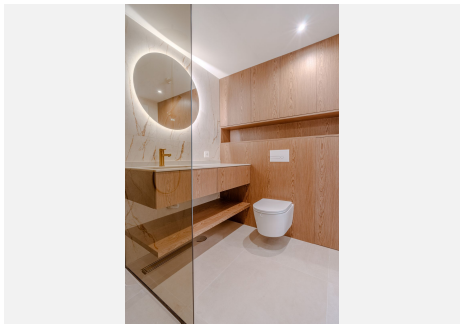
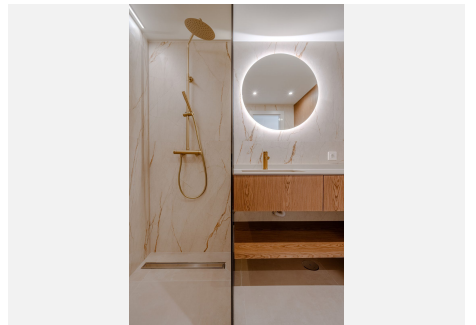
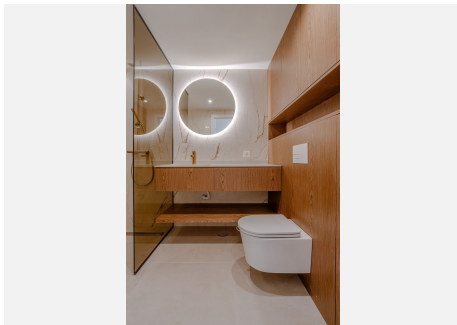
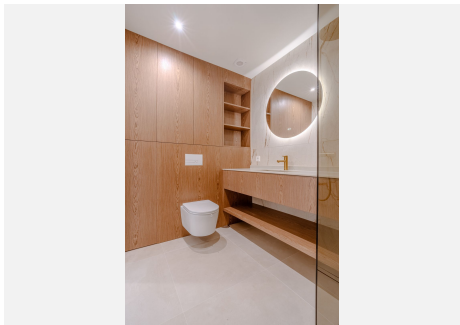
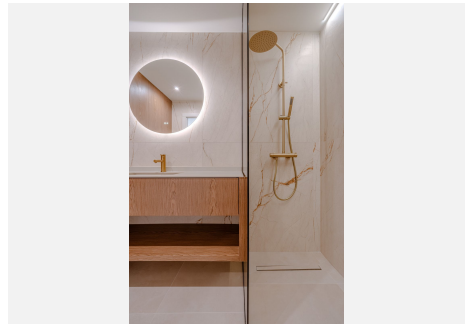
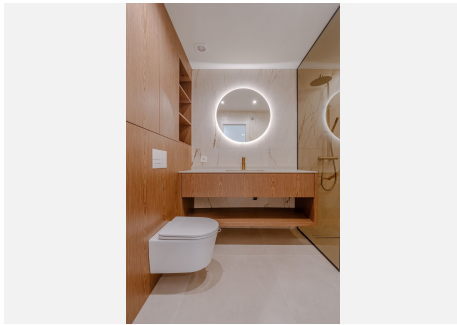
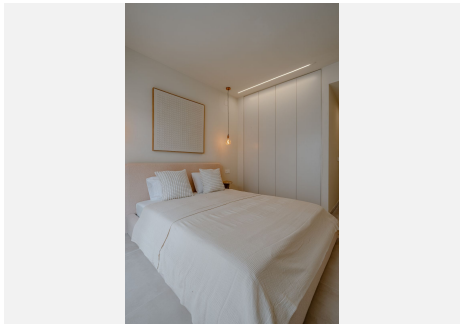
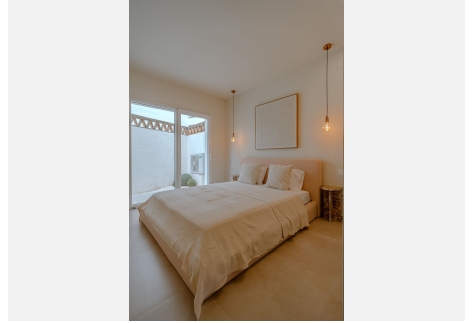
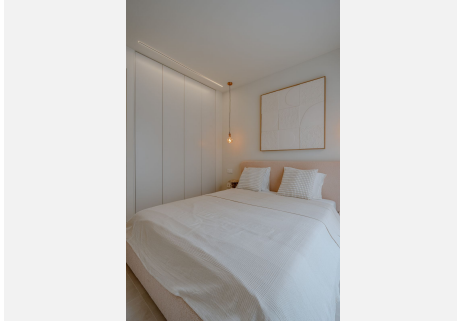
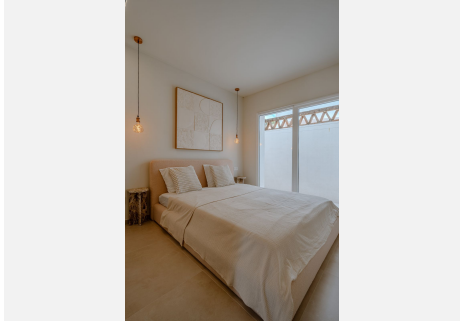
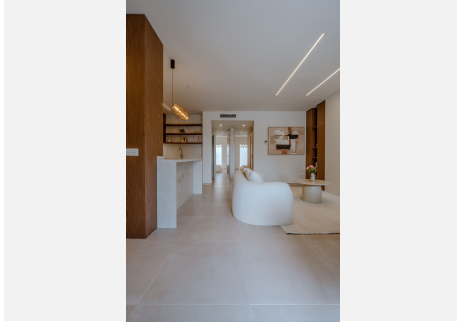
Pinos de Aloha is known for its privileged location in the heart of Nueva Andalucía, one of Marbella's most desirable addresses, celebrated for its exclusivity, tranquillity, and upscale lifestyle. Residents enjoy close proximity to international schools, fine dining, boutique shopping, prestigious tennis and padel clubs, and all essential amenities, while Puerto Banús and Marbella's golden beaches are just minutes away.

A perfect home for those seeking refined living in one of Marbella's most exclusive neighbourhoods, combining privacy, elegance, and an unbeatable lifestyle location.



IDILIQ

ESTATES



IDILIQ

ESTATES

