



R5400169

📍 La Mairena

REF# R5400169 699.000 €

BEDS

3

BATHS

3

BUILT

224 m²

TERRACE

20 m²

Spectacular Duplex Penthouse with 4-Metre Ceilings and Panoramic Views in El Soto de Marbella

Located within the exclusive El Soto de Marbella community in La Mairena, this elegant duplex penthouse offers an exceptional combination of space, privacy, and panoramic views in one of the most privileged natural settings on the Costa del Sol.

The property stands out for its extraordinary brightness and impressive main living area featuring nearly 4-metre-high ceilings, a rare architectural feature that creates a unique sense of space, elegance, and connection with the surrounding landscape.

Distributed over two levels, the apartment offers three bedrooms, two bathrooms, three spacious terraces, a private parking space, and a storage room.

The main floor comprises a fully equipped kitchen, a practical separate utility room, two bedrooms, two terraces, a full bathroom, and a spacious open-plan living and dining area with direct access to a

+34 951 123 083 | +44 (0)330 179 8687 | info@idiliqestates.com Local 28, Edificio D, Centro de Negocios Puerta de Banús, N-340, Km 175, 29660 Nueva Andalucía

IDILIQ

ESTATES

magnificent terrace designed to make the most of the spectacular open views of the Mediterranean Sea, the surrounding mountains, and the protected forests of La Mairena. The second terrace provides a perfect retreat where you can enjoy either sun or shade throughout the day.

The upper floor features a spacious bedroom, a full bathroom, and access to a private terrace, offering a peaceful and privileged setting to enjoy the Mediterranean climate all year round.

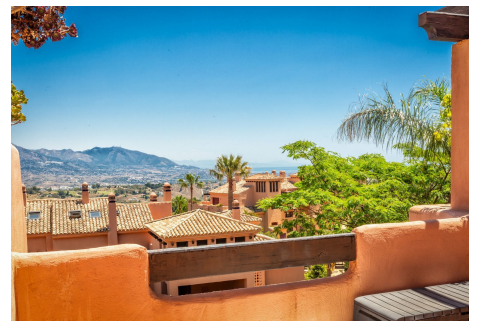
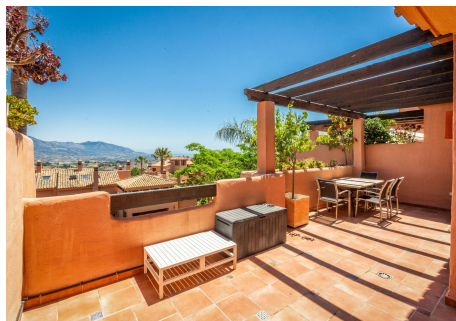
The three terraces allow you to enjoy the sun from sunrise to sunset, creating true extensions of the living space, perfect for relaxing, entertaining family and friends, or simply admiring the breathtaking scenery.

The property forms part of a secure and impeccably maintained gated community with access to the outstanding facilities of El Soto de Marbella, including swimming pools, a gym, sauna, tennis and paddle courts, an on-site restaurant, and an exclusive 9-hole golf course surrounded by nature.

Situated within the UNESCO-protected Sierra de las Nieves Biosphere Reserve, the urbanisation offers a unique lifestyle where peace and nature blend seamlessly with close proximity to Marbella, some of the finest beaches on the Costa del Sol, renowned golf courses, beach clubs, and all essential amenities.

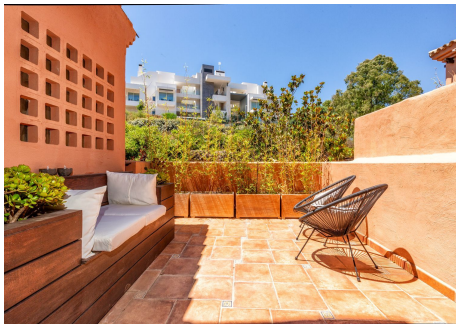
The property is sold fully furnished with designer furniture and is ready to move into.

An exceptional home for those seeking generous living spaces, breathtaking views, and an outstanding quality of life in one of East Marbella's most exclusive residential locations.



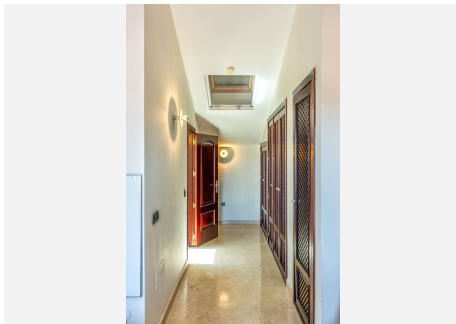
IDILIQ

ESTATES



IDILIQ

ESTATES



IDILIQ

ESTATES

