



R5399908

📍 La Quinta

REF# R5399908 1.195.000 €

BEDS

3

BATHS

2

BUILT

124 m²

TERRACE

163 m²

LUXURY PENTHOUSE WITH PANORAMIC SEA, GOLF AND MOUNTAIN VIEWS IN LA QUINTA

Nestled within the prestigious La Quinta Golf area of Benahavís, this exceptional three-bedroom penthouse offers the perfect blend of privacy, space and breathtaking views.

Positioned in an elevated south-facing location, the property enjoys panoramic vistas across the golf course, Mediterranean coastline and surrounding mountains, creating an ever-changing backdrop from sunrise to sunset.

The bright and spacious living area flows seamlessly onto a generous terrace, ideal for relaxing or entertaining while taking in the spectacular views. The fully fitted kitchen and three well-proportioned bedrooms provide comfortable accommodation for both permanent living and holiday enjoyment. The principal suite benefits from an en-suite bathroom, fitted wardrobes and direct access to the terrace.

IDILIQ

ESTATES

A standout feature of this property is the impressive rooftop solarium. Offering over 160m² of outdoor space, it has been designed for the Costa del Sol lifestyle with multiple areas for dining, sunbathing and entertaining. Complete with a jacuzzi and outdoor kitchen area, it provides the perfect setting for enjoying Marbella's year-round sunshine.

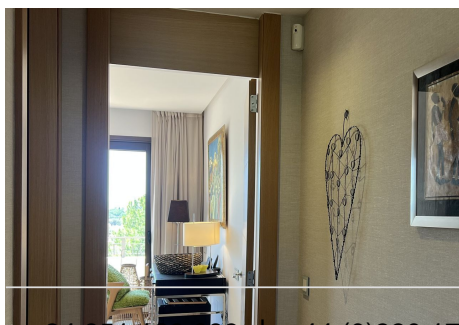
The property is situated within a gated community with beautifully landscaped gardens and a communal swimming pool, just minutes from La Quinta Golf, several championship golf courses, Benahavís village, Puerto Banús and Marbella.

Additional features include underground parking, air conditioning, underfloor heating in the bathrooms, fitted wardrobes, lift access and fibre optic internet.

Whether as a luxury holiday home, rental investment or permanent residence, this penthouse represents a rare opportunity to own a prime property in one of the Costa del Sol's most sought-after locations.

Highlights:

- 3 Bedrooms | 2 Bathrooms
- 124m² Interior Living Space
- 163m² Terraces & ?Solarium
- ?South-Facing ?Orientation
- ?Panoramic ?Sea, Golf ?& Mountain Views
- ?Rooftop Jacuzzi ?& Outdoor ?Entertaining ?Area
- Gated Community
- ?Landscaped Gardens ?& ?Swimming Pool
- ?Underground ?Parking
- ?Prime ?La ?Quinta, ?Benahavís ?Location



IDILIQ

ESTATES



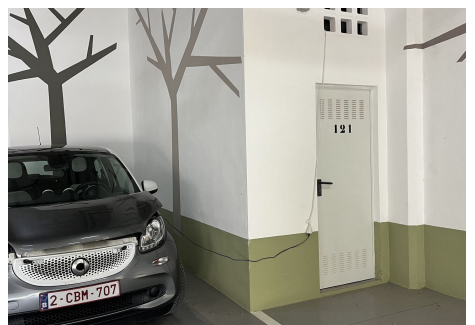
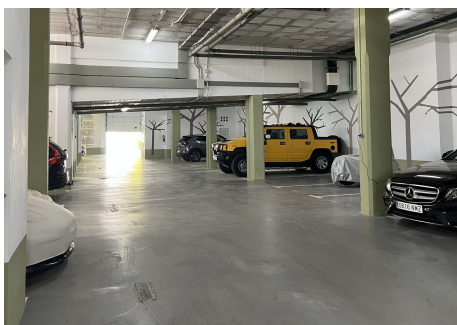
IDILIQ

ESTATES



IDILIQ

ESTATES



IDILIQ

ESTATES



IDILIQ

ESTATES



IDILIQ

ESTATES

