



R5396002

📍 La Mairena

REF# R5396002 635.000 €

BEDS

2

BATHS

2

BUILT

177 m<sup>2</sup>

TERRACE

211 m<sup>2</sup>

Perched in the prestigious heights of La Mairena, this exceptional penthouse offers a lifestyle defined by light, space, and some of the most dramatic views on the Costa del Sol. Spanning an impressive 177 m<sup>2</sup> interior, the home is designed to blend modern comfort with its stunning natural surroundings, featuring two spacious bedrooms and a bright, open living area that feels connected to the horizon.

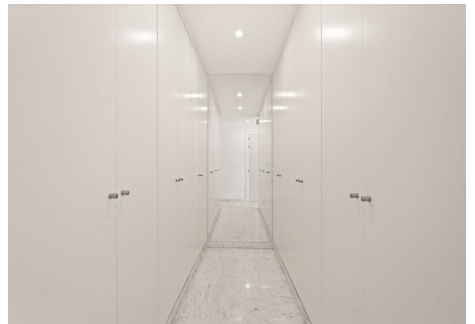
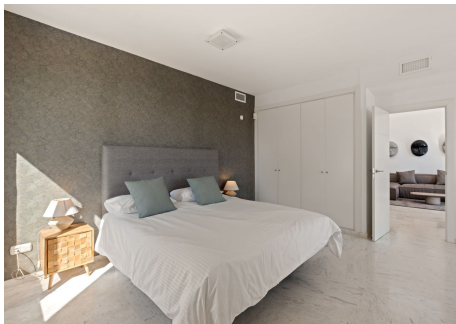
The true masterpiece of this property is the staggering 211 m<sup>2</sup> of private outdoor space. While the main terrace is ideal for morning coffee and shaded relaxation, the massive 176 m<sup>2</sup> rooftop solarium provides a breathtaking 360-degree stage. From here, you can take in panoramic vistas of the Mediterranean Sea, majestic mountain ranges, and the protected greenery of the surrounding forest.

Located within a secure, gated complex with a communal pool and climate control throughout, this residence offers the perfect balance of serenity and convenience. You are tucked away in an ecological paradise near local forests and hiking trails, yet remain just minutes from elite golf courses, international schools, and the vibrant life of the coast. It is a rare find that offers the expansive feel of a villa with the elevated security and "lock-and-go" ease of a penthouse.

+34 951 123 083 | +44 (0)330 179 8687 | [info@idiliqestates.com](mailto:info@idiliqestates.com) Local 28, Edificio D, Centro de Negocios Puerta de Banús, N-340, Km 175, 29660 Nueva Andlucia

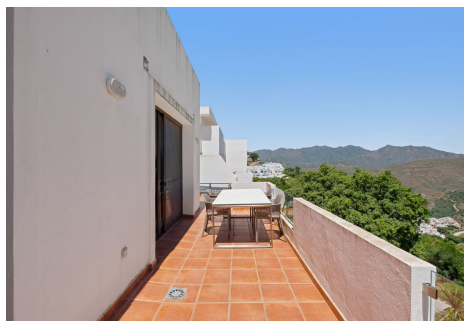
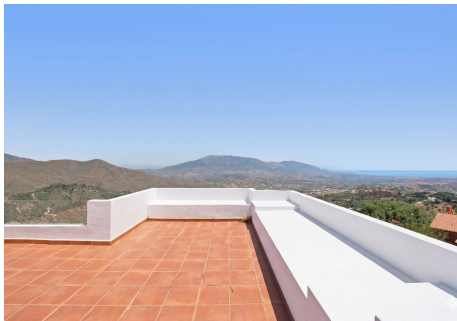
# IDILIQ

ESTATES



# IDILIQ

ESTATES



# IDILIQ

ESTATES

