



## MIDDLE FLOOR APARTMENT 2 BEDROOMS 2 BATHROOMS IN BENALMADENA COSTA

 Benalmadena Costa

REF# R5391253    395.000 €

BEDS

2

BATHS

2

BUILT

109 m<sup>2</sup>

TERRACE

25 m<sup>2</sup>

Corner Apartment with Terrace and Ocean Views in Benalmádena Costa

This 109 m<sup>2</sup> corner apartment is located in the Jardines de Rubens residential complex in Benalmádena Costa. With an east- and south-facing orientation, the home receives direct natural light from morning until noon, avoiding the hottest hours of the afternoon. From its vantage point, the views encompass the Mediterranean Sea, the Sierra de Mijas, and the coastal urban landscape.

Built in 2001, the apartment has had a single owner and remains in impeccable original condition, with no structural renovations. The floor plan features a living-dining room, a separate kitchen with a utility area, 2 spacious bedrooms, and 2 full bathrooms. The central outdoor space is a single 25 m<sup>2</sup> terrace that wraps around the corner of the building, maximizing natural light inside.

The location stands out for its convenience, making a car unnecessary for daily life. The beach is just 800 meters away, a walk of less than 10 minutes. Right on the street are essential amenities such as a Mercadona supermarket, a pharmacy, restaurants, and three international schools. The common areas include a large swimming pool, a paddle tennis court, and green spaces.

## Technical Specifications

Built area: 109 m<sup>2</sup>

Terrace: 1 single terrace of 25 m<sup>2</sup>

Bedrooms: 2

Bathrooms: 2 full

Orientation: East + South (Corner unit)

Year built: 2001

Condition: Original, excellent condition

Common areas: Community pool, paddle tennis court, and gardens

## Nearby Amenities

Beach: 800 meters (less than a 10-minute walk)

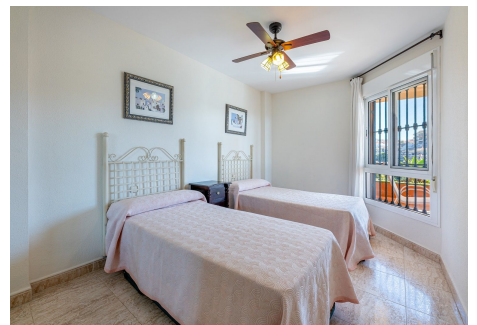
Mercadona: 2-minute walk

Pharmacy and Restaurants: 1–3-minute walk

International Schools: 1–2 km (within walking distance)

Malaga Airport: 25-minute drive

Contact us to inquire about terms or schedule a private viewing.



# IDILIQ

ESTATES

