

# IDILIQ

ESTATES



R5390683

📍 NEW GOLDEN MILE

REF# R5390683 599.000 €

BEDS

3

BATHS

2

BUILT

90 m<sup>2</sup>

TERRACE

96 m<sup>2</sup>

## NEW on the MARKET!

Situated within the well-established, sought-after residential community of Pelican/Flamingo Park on the New Golden Mile between Estepona and Marbella, this freshly renovated Penthouse apartment offers an excellent opportunity to enjoy the relaxed Mediterranean lifestyle in a very conveniently located urbanisation. The gated complex features beautiful Andalusian architecture and enjoys an enviable position just a short walk from the beach via a nearby footbridge; with bars, restaurants, supermarkets, banks and everyday amenities literally on the doorstep. Benavista commercial center and Roza Rossa tennis club are stone throw from home, Estepona town and the world-famous Puerto Banús are both approximately 10minutes by car, while Málaga and Gibraltar airports are easily reachable in around 45 minutes.

The Penthouse offers well-distributed interior space across good size living-dining room with open plan functional kitchen, three bedrooms and two bathrooms (one of them ensuite), complemented by a sunny south facing terrace. The bright and spacious lounge flows naturally onto the terrace, creating a seamless indoor-outdoor connection ideal for enjoying the mild Costa del Sol climate. All three bedrooms are generously proportioned, with fitted wardrobes, UFH in bathrooms & plenty of natural light, offering comfortable accommodation for both permanent residence and holiday use. Being situated on the top floor,

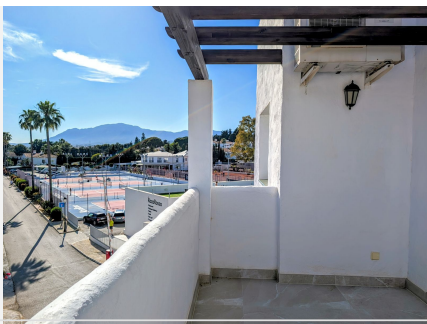
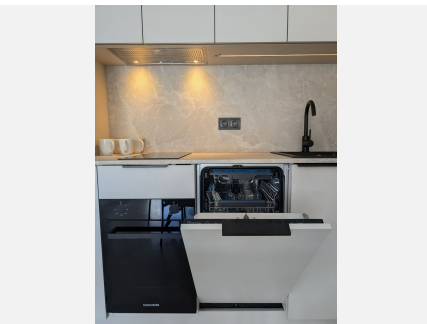
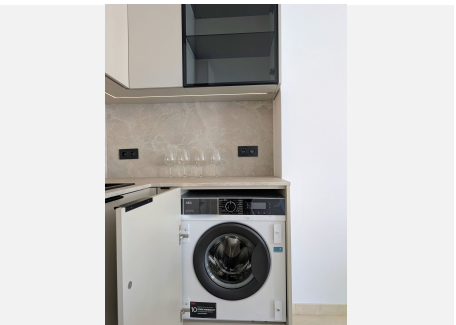
+34 951 123 083 | +44 (0)330 179 8687 | info@idiliqestates.com Local 28, Edificio D, Centro de Negocios Puerta de Banús, N-340, Km 175, 29660 Nueva Andlucia

# IDILIQ

ESTATES

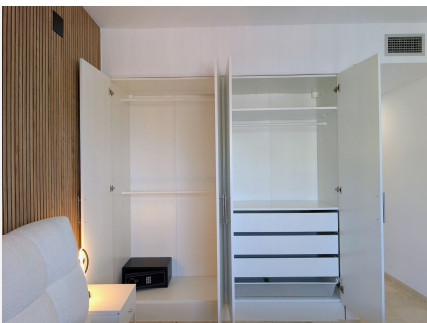
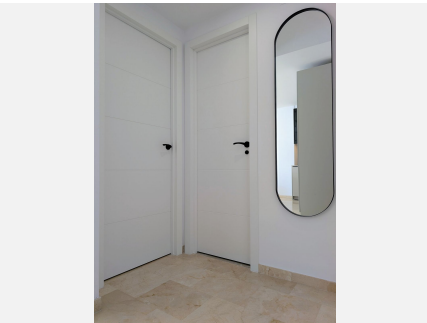
provides an elevated sense of privacy and extensive private rooftop terrace with built in BBQ kitchen and panoramic views towards the Mediterranean sea, Gibraltar & mountains. The property comes complete with parking space in underground garage, adding practicality and convenience to the overall offering. The elevator connects with the Penthouse level.

The community itself offers a communal swimming pool and well-maintained garden areas, set within a peaceful and friendly residential environment that has long been popular with both international buyers and long-term residents alike.



# IDILIQ

ESTATES



# IDILIQ

ESTATES

